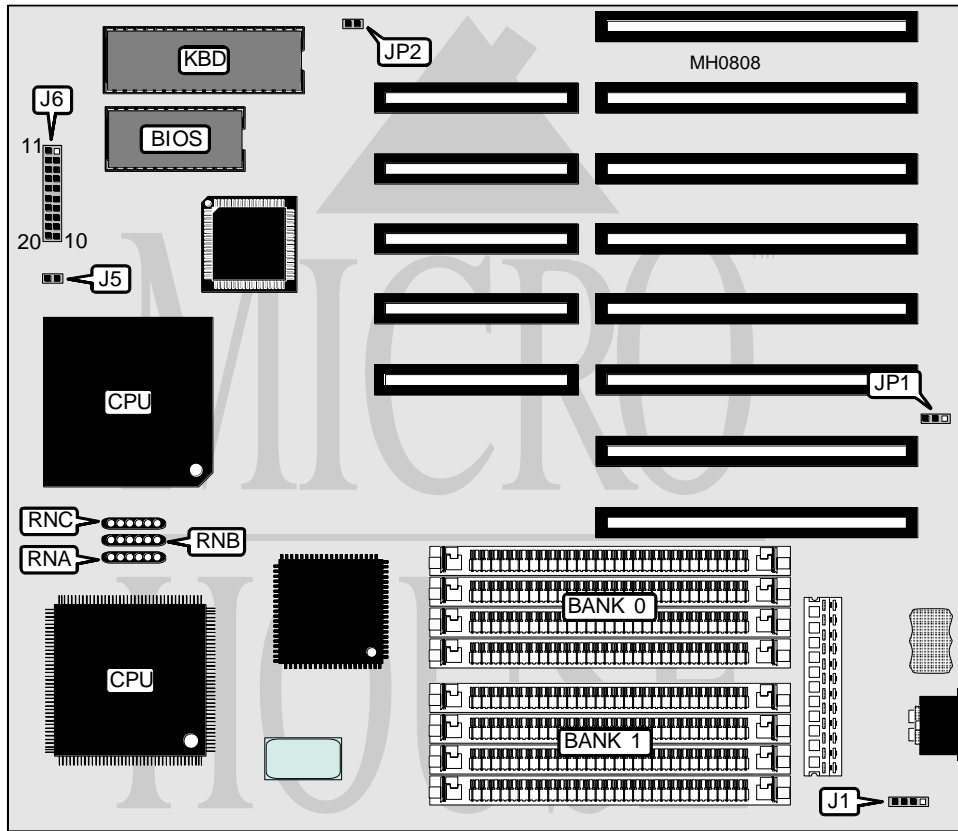


TMC RESEARCH CORPORATION

PAT48PL

Processor	80486SX/80487SX/80486DX/ODP486SX/80486DX2
Processor Speed	16/20/25/33/50(internal)/66(internal)MHz
Chip Set	OPTI
Max. Onboard DRAM	32MB
Cache	None
BIOS	AMI
Dimensions	254mm x 218mm
I/O Options	None
NPU Options	None



CONNECTIONS			
Purpose	Location	Purpose	Location
External battery	J1	Turbo LED	J6 pins 8 & 18
IDE LED out	J5	Reset switch	J6 pins 9 & 19
Speaker	J6 pins 1 - 4	IDE LED in	J6 pins 10 & 20
Turbo switch	J6 pins 7 & 17	Power LED & keylock	J6 pins 11 - 15

Note: Board may be supplied with a surface mounted 80486SX.

Continued on next page . . .

TMC RESEARCH CORPORATION

PAT48PL

... continued from previous page

USER CONFIGURABLE SETTINGS		
Function	Jumper	Position
í CMOS memory normal operation (internal battery)	JP1	pins 2 & 3 closed
CMOS memory normal operation (external battery at J1)	JP1	Open
CMOS memory clear	JP1	pins 1 & 2 closed
í Monitor type select color	JP2	Closed
Monitor type select monochrome	JP2	Open

DRAM CONFIGURATION		
Size	Bank 0	Bank 1
1MB	(4) 256K x 9	NONE
2MB	(4) 256K x 9	(4) 256K x 9
4MB	(4) 1M x 9	NONE
5MB	(4) 256K x 9	(4) 1M x 9
8MB	(4) 1M x 9	(4) 1M x 9
16MB	(4) 4M x 9	NONE
32MB	(4) 4M x 9	(4) 4M x 9

CPU TYPE CONFIGURATION			
Type	RNA	RNB	RNC
80486SX	Not installed	Installed	Not installed
80487SX	Installed	Not installed	Not installed
ODP486SX	Installed	Not installed	Not installed
80486DX	Not installed	Not installed	Installed
80486DX2	Not installed	Not installed	Installed

Note: Although there are two locations for CPUs, only one may be used at a time.