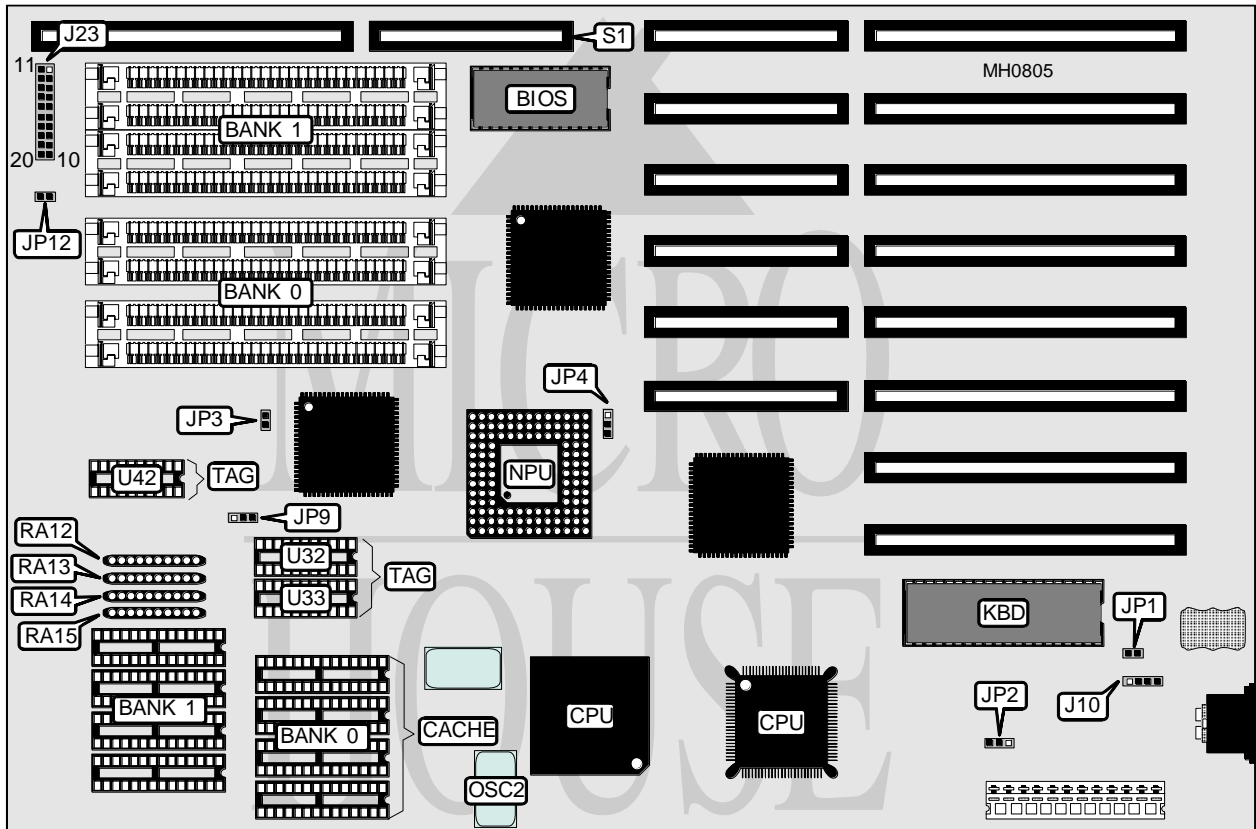


TMC RESEARCH CORPORATION

PAT38PX (VER. 4.0)

Processor	80386DX
Processor Speed	25/33/40MHz
Chip Set	OPTI
Max. Onboard DRAM	32MB
Cache	32/64/128/256KB
BIOS	AMI
Dimensions	330mm x 218mm
I/O Options	32-bit external memory card slot
NPU Options	80387/3167



CONNECTIONS			
Purpose	Location	Purpose	Location
External battery	J10	Reset switch	J23 pins 9 & 19
Speaker	J23 pins 1 - 4	IDE LED in	J23 pins 10 & 20
Power LED & keylock	J23 pins 11 - 15	IDE LED out	JP12
Turbo switch	J23 pins 7 & 17	32-bit external memory card	S1
Turbo LED	J23 pins 8 & 18		
Note: Board may be supplied with a surface mounted 80386DX.			

Continued on next page . . .

TMC RESEARCH CORPORATION

PAT38PX (VER. 4.0)

... continued from previous page

USER CONFIGURABLE SETTINGS		
Function	Jumper	Position
í Monitor type select color	JP1	Closed
Monitor type select monochrome	JP1	Open
í CMOS memory normal operation (internal battery)	JP2	pins 1 & 2 closed
CMOS memory normal operation (external battery at J10)	JP2	Open
CMOS memory clear	JP2	pins 2 & 3 closed
í Bus speed select iOSC/6	JP3	Open
Bus speed select iOSC/8	JP3	Closed
í NPU mode select synchronous with CPU	JP4	pins 2 & 3 closed
NPU mode select synchronous with OSC2/2	JP4	pins 1 & 2 closed

DRAM CONFIGURATION				
Size	Bank 0	Bank 1	Bank 2	Bank 3
1MB	(4) 256K x 9	NONE	NONE	NONE
2MB	(4) 256K x 9	(4) 256K x 9	NONE	NONE
3MB (A)	(4) 256K x 9	(4) 256K x 9	(4) 256K x 9	NONE
4MB (A)	(4) 256K x 9	(4) 256K x 9	(4) 256K x 9	(4) 256K x 9
4MB	(4) 1M x 9	NONE	NONE	NONE
5MB	(4) 256K x 9	(4) 1M x 9	NONE	NONE
6MB (A)	(4) 1M x 9	(4) 256K x 9	(4) 256K x 9	NONE
6MB (B)	(4) 256K x 9	(4) 256K x 9	(36) 411000	NONE
8MB	(4) 1M x 9	(4) 1M x 9	NONE	NONE
10MB (A)	(4) 1M x 9	(4) 1M x 9	(4) 256K x 9	(4) 256K x 9
12MB (A)	(4) 1M x 9	(4) 1M x 9	(4) 1M x 9	NONE
12MB (B)	(4) 1M x 9	(4) 1M x 9	(36) 411000	NONE
16MB	(4) 4M x 9	NONE	NONE	NONE
16MB (A)	(4) 1M x 9	(4) 1M x 9	(4) 1M x 9	(4) 1M x 9
20MB	(4) 4M x 9	(4) 1M x 9	NONE	NONE
24MB (B)	(4) 4M x 9	NONE	(36) 411000	(36) 411000
32MB	(4) 4M x 9	(4) 4M x 9	NONE	NONE
64MB (A)	(4) 4M x 9	(4) 4M x 9	(4) 4M x 9	(4) 4M x 9

Notes: Banks 2 & 3 in settings (A) are used when proprietary external memory card SIM64P is installed; banks 2 & 3 in settings (B) are used when card DIP8P is installed.

Continued on next page...

TMC RESEARCH CORPORATION

PAT38PX (VER. 4.0)

... continued from previous page

CACHE CONFIGURATION				
Size	Bank 0	Bank 1	TAG (U32)	TAG (U42)
32KB	(4) 8K x 8	NONE	(1) 8K x 8	(1) 4K x 1 or (1) 16K x 1
64KB	(4) 8K x 8	(4) 8K x 8	(1) 8K x 8	(1) 4K x 1 or (1) 16K x 1
128KB	(4) 32K x 8	NONE	(1) 8K x 8	(1) 16K x 1
256KB	(4) 32K x 8	(4) 32K x 8	(2) 32K x 8	(1) 16K x 1

Notes: If DRAM is \leq 8MB, all cache sizes may be installed; if DRAM is $>$ 8MB and \leq 16MB, 64, 128 or 256KB cache must be installed; if DRAM is $>$ 16MB and \leq 32MB, 128 or 256KB cache must be installed; if DRAM is $>$ 32MB, 256KB cache must be installed.

CACHE JUMPER/RESISTOR CONFIGURATION					
Size	JP9	RA12	RA13	RA14	RA15
32KB	1 & 2	Installed	Not installed	Not installed	Not installed
64KB	1 & 2	Not installed	Installed	Not installed	Not installed
128KB	1 & 2	Not installed	Not installed	Installed	Not installed
256KB	2 & 3	Not installed	Not installed	Not installed	Installed

Note: Pins designated should be in the closed position.