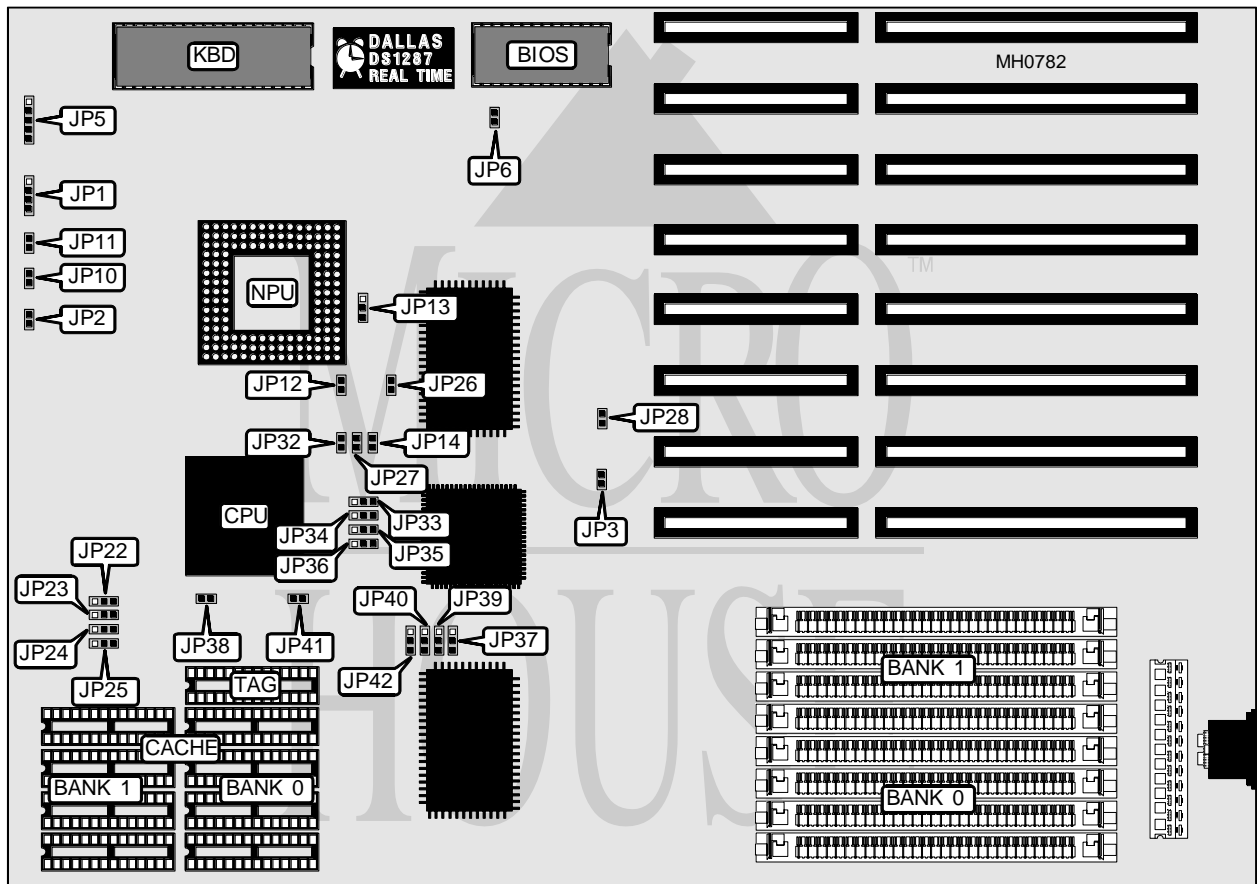


# MULTI DIMENSION RESEARCH, INC.

## CACHE FM - S 4 8 6 C

Processor	80486DX
Processor Speed	25/33/40/50MHz
Chip Set	Symphony
Max. Onboard DRAM	32MB
Cache	64/128/256/1024KB
BIOS	AMI
Dimensions	330mm x 218mm
I/O Options	None
NPU Options	4167



CONNECTIONS			
Purpose	Location	Purpose	Location
Speaker	JP1	Turbo switch	JP10
Reset switch	JP2	Turbo LED	JP11
Power LED & keylock	JP5		

*Continued on next page . . .*

## MULTI DIMENSION RESEARCH, INC.

## CACHE FM - S486C

... continued from previous page

## USER CONFIGURABLE SETTINGS

Function	Jumper	Position
í CPU speed select CCLK2 (CLOCK=OSC)	JP3	pins 1 & 2 closed
CPU speed select PLCK (CLOCK=OSC2)	JP3	pins 2 & 3 closed
í Monitor type select color	JP6	Closed
Monitor type select monochrome	JP6	Open
í Cache write hit select 0 wait state	JP32	Closed
Cache write hit select 1 wait state	JP32	Open
í Factory configured - do not alter	JP33	pins 2 & 3 closed

## DRAM CONFIGURATION

Size	Bank 0	Bank 1
1MB	(4) 256K x 9	NONE
2MB	(4) 256K x 9	(4) 256K x 9
4MB	(4) 1M x 9	NONE
5MB	(4) 256K x 9	(4) 1 M x 9
8MB	(4) 1M x 9	(4) 1M x 9
16MB	(4) 4M x 9	NONE
17MB	(4) 256K x 9	(4) 4M x 9
20MB	(4) 1M x 9	(4) 4M x 9
32MB	(4) 4M x 9	(4) 4M x 9

## CACHE CONFIGURATION

Size	Bank 0	Bank 1	TAG	Line size
64KB	(4) 8K x 8	(4) 8K x 8	(1) 8K x 8	4
128KB	(4) 32K x 8	NONE	(1) 32K x 8	1
128KB	(4) 32K x 8	NONE	(1) 8K x 8	4
256KB	(4) 32K x 8	(4) 32K x 8	(1) 32K x 8	4
1MB	(4) 128K x 8	(4) 128K x 8	(1) 128K x 8	4

## CACHE JUMPER CONFIGURATION

Size	JP22	JP23	JP24	JP25	JP26
64KB	1 & 2	1 & 2	1 & 2	1 & 2	Open
128KB	2 & 3	1 & 2	1 & 2	1 & 2	Closed
128KB	2 & 3	1 & 2	1 & 2	1 & 2	Closed
256KB	2 & 3	2 & 3	1 & 2	1 & 2	Open
1MB	2 & 3	2 & 3	2 & 3	2 & 3	Open

Note: Pins designated should be in the closed position.

## CACHE JUMPER CONFIGURATION (CON'T)

Size	JP28	JP34	JP35	JP36	JP37
64KB	Closed	JP22	2 & 3	2 & 3	2 & 3
128KB	Open	JP23	1 & 2	1 & 2	1 & 2
128KB	Closed	JP24	1 & 2	1 & 2	1 & 2
256KB	Closed	JP25	2 & 3	2 & 3	2 & 3
1MB	Closed	JP26	2 & 3	2 & 3	2 & 3

Note: Pins designated should be in the closed position.



# MULTI DIMENSION RESEARCH, INC.

## CACHE FM - S486C

... continued from previous page

CACHE JUMPER CONFIGURATION (CON'T)					
Size	JP38	JP39	JP40	JP41	JP42
64KB	Open	2 & 3	2 & 3	Open	2 & 3
128KB	Closed	Open	1 & 2	Closed	2 & 3
128KB	Closed	1 & 2	1 & 2	Open	1 & 2
256KB	Open	2 & 3	2 & 3	Open	2 & 3
1MB	Open	2 & 3	2 & 3	Open	2 & 3
Note: Pins designated should be in the closed position.					

CPU TYPE CONFIGURATION			
Type	JP12	JP13	JP14
80486SX	Open	pins 2 & 3 closed	Open
80486DX	Closed	pins 1 & 2 closed	Closed

CPU SPEED CONFIGURATION		
Speed	OSC	JP27
25MHz	50MHz	Open
33MHz	66MHz	Open
40MHz	40MHz	Closed
40MHz	80MHz	Open
50MHz	50MHz	Closed