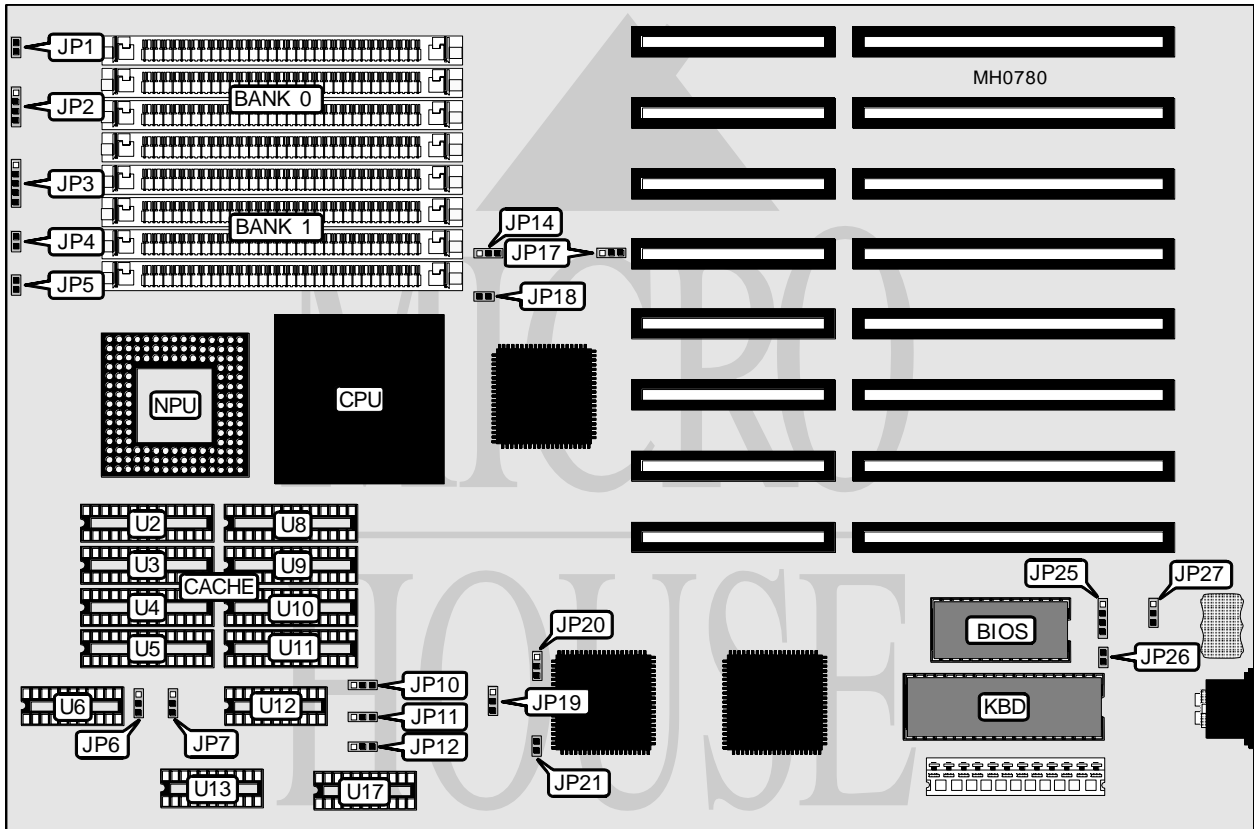


AUVA COMPUTER, INC. CAM 33-U0/CAM 50-U0

Processor	80486SX/80487SX/80486DX
Processor Speed	33/50MHz
Chip Set	Unidentified
Max. Onboard DRAM	32MB
Cache	32/64/128/256KB
BIOS	AMI
Dimensions	330mm x 218mm
I/O Options	None
NPU Options	4167



CONNECTIONS			
Purpose	Location	Purpose	Location
Reset switch	JP1	Turbo switch	JP4
Speaker	JP2	Turbo LED	JP5
Power LED & keylock	JP3	External battery	JP25

Continued on next page . . .

AUVA COMPUTER, INC.

CAM 33-U0/CAM 50-U0

... continued from previous page

USER CONFIGURABLE SETTINGS

Function	Jumper	Position
í CPU speed select 33MHz	JP19	pins 2 & 3 closed
CPU speed select 50MHz	JP19	pins 1 & 2 closed
í Factory configured - do not alter	JP20	Closed
í Monitor type select color	JP26	Closed
Monitor type select monochrome	JP26	Open
í CMOS memory normal operation	JP27	pins 1 & 2 closed
CMOS memory clear	JP27	pins 2 & 3 closed

DRAM CONFIGURATION

Size	Bank 0	Bank 1
1MB	(4) 256K x 9	NONE
2MB	(4) 256K x 9	(4) 256K x 9
4MB	(4) 1M x 9	NONE
5MB	(4) 256K x 9	(4) 1M x 9
8MB	(4) 1M x 9	(4) 1M x 9
16MB	(4) 4M x 9	NONE
20MB	(4) 1M x 9	(4) 4M x 9
32MB	(4) 4M x 9	(4) 4M x 9

CACHE CONFIGURATION

Size	Cache	Location	TAG SRAM	Location
32KB	(4) 8K x 8	U2,U4,U8 & U10	(4) 16K x 4	U6,U12,U13 & U17
64KB	(8) 8K x 8	ALL	(3) 16K x 4	U6,U13 & U17
128KB	(4) 32K x 8	U2,U4,U8 & U10	(3) 16K x 4	U6,U13 & U17
256KB	(8) 32K x 8	ALL	(3) 16K x 4	U6,U13 & U17

CACHE JUMPER CONFIGURATION

Size	JP6	JP7	JP10	JP11	JP12
32KB	2 & 3	Open	1 & 2	1 & 2	1 & 2
64KB	1 & 2	Open	1 & 2	1 & 2	2 & 3
128KB	2 & 3	1 & 2	2 & 3	1 & 2	2 & 3
256KB	1 & 2	2 & 3	2 & 3	2 & 3	2 & 3

Note: Pins designated should be in the closed position.

CPU TYPE CONFIGURATION

Type	JP14	JP17	JP18	JP21
80486SX	pins 2 & 3 closed	Open	Open	Closed
80487SX	pins 1 & 2 closed	pins 2 & 3 closed	Closed	Open
80486DX	pins 1 & 2 closed	pins 1 & 2 closed	Closed	Open