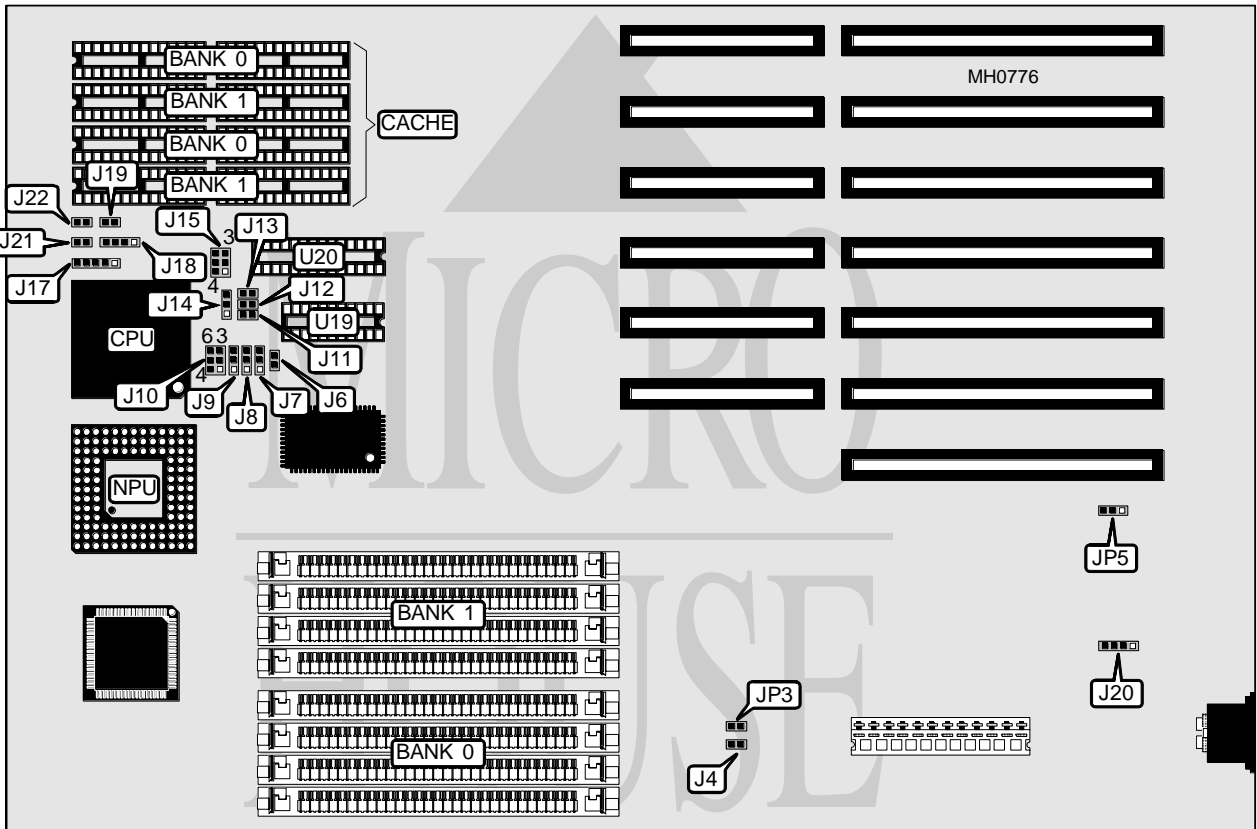


# SOYO COMPUTER CO., LTD.

## 386DX BOARD

<b>Processor</b>	80386DX
<b>Processor Speed</b>	33/40MHz
<b>Chip Set</b>	ESEQ
<b>Max. Onboard DRAM</b>	16MB
<b>Cache</b>	64/128/256KB
<b>BIOS</b>	AMI
<b>Dimensions</b>	330mm x 218mm
<b>I/O Options</b>	None
<b>NPU Options</b>	80387/3167



CONNECTIONS			
Purpose	Location	Purpose	Location
Power LED & keylock	J17	External battery	J20
Speaker	J18	Turbo switch	J21
Reset switch	J19	Turbo LED	J22

Continued on next page . . .

**SOYO COMPUTER CO., LTD.**  
**386DX BOARD**

... continued from previous page

USER CONFIGURABLE SETTINGS		
Function	Jumper	Position
í Monitor type select monochrome	JP3	Open
Monitor type select color	JP3	Closed
í CMOS memory normal operation	JP5	pins 1 & 2 closed
CMOS memory clear	JP5	pins 2 & 3 closed

DRAM CONFIGURATION		
Size	Bank 0	Bank 1
1MB	(4) 256K x 9	NONE
2MB	(4) 256K x 9	(4) 256K x 9
4MB	(4) 1M x 9	NONE
5MB	(4) 256K x 9	(4) 1M x 9
8MB	(4) 1M x 9	(4) 1M x 9
16MB	(4) 4M x 9	NONE
17MB	(4) 256K x 9	(4) 4M x 9
20MB	(4) 1M x 9	(4) 4M x 9
32MB	(4) 4M x 9	(4) 4M x 9

CACHE CONFIGURATION			
Size	Bank 0	Bank 1	TAG
64KB	(4) 8K x 8	(4) 8K x 8	(1) 8K x 8
128KB	(4) 32K x 8	NONE	(1) 8K x 8
256KB	(4) 32K x 8	(4) 32K x 8	(1) 32K x 8

CACHE JUMPER CONFIGURATION						
Size	J4	J6	J7	J8	J9	J10
64KB	Open	Open	1 & 2	1 & 2	2 & 3	Open
128KB	Open	Closed	1 & 2	2 & 3	2 & 3	Open
256KB	Open	Closed	2 & 3	2 & 3	2 & 3	Open

Note: Pins designated should be in the closed position.

CACHE JUMPER CONFIGURATION (CON'T)					
Size	J11	J12	J13	J14	J15
64KB	Closed	Open	Open	1 & 2	1 & 2
128KB	Closed	Open	Closed	1 & 2	4 & 5
256KB	Closed	Closed	Closed	1 & 2	5 & 6

Note: Pins designated should be in the closed position.