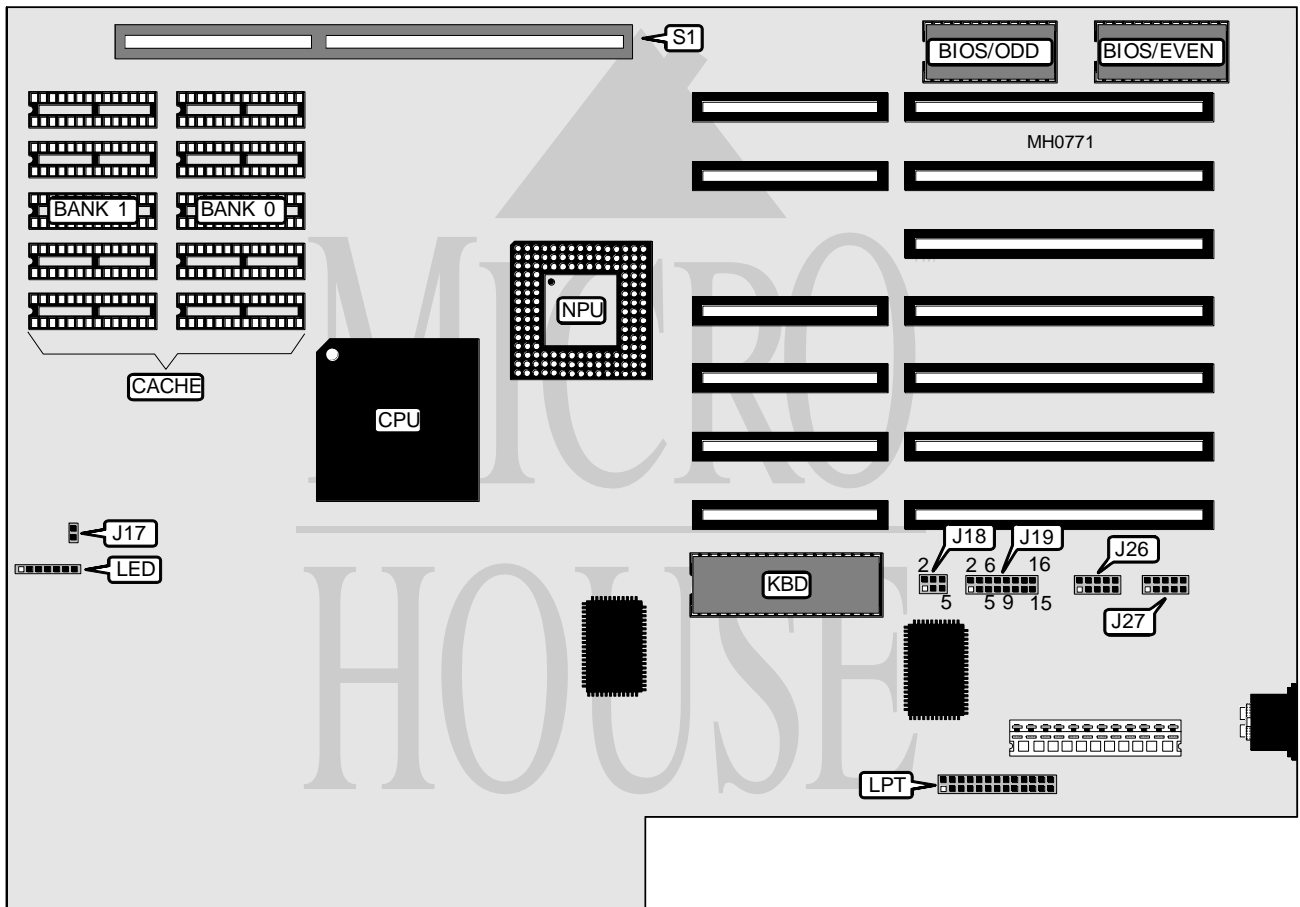


EVEREX SYSTEMS, INC.

STEP 486 GATE ARRAY (EV-8038)

<b>Processor</b>	80486DX
<b>Processor Speed</b>	25/33MHz
<b>Chip Set</b>	Everex
<b>Max. Onboard DRAM</b>	64MB (on external memory board)
<b>Cache</b>	128/256KB
<b>BIOS</b>	Everex
<b>Dimensions</b>	355mm x 250mm
<b>I/O Options</b>	32-bit external memory card slot, parallel port, serial ports (2)
<b>NPU Options</b>	4167



CONNECTIONS			
Purpose	Location	Purpose	Location
Serial port (COM1)	J26	Parallel port	LPT
Serial port (COM2)	J27	External memory card slot	S1
Front panel connector	LED		

Continued on next page . . .

EVEREX SYSTEMS, INC.

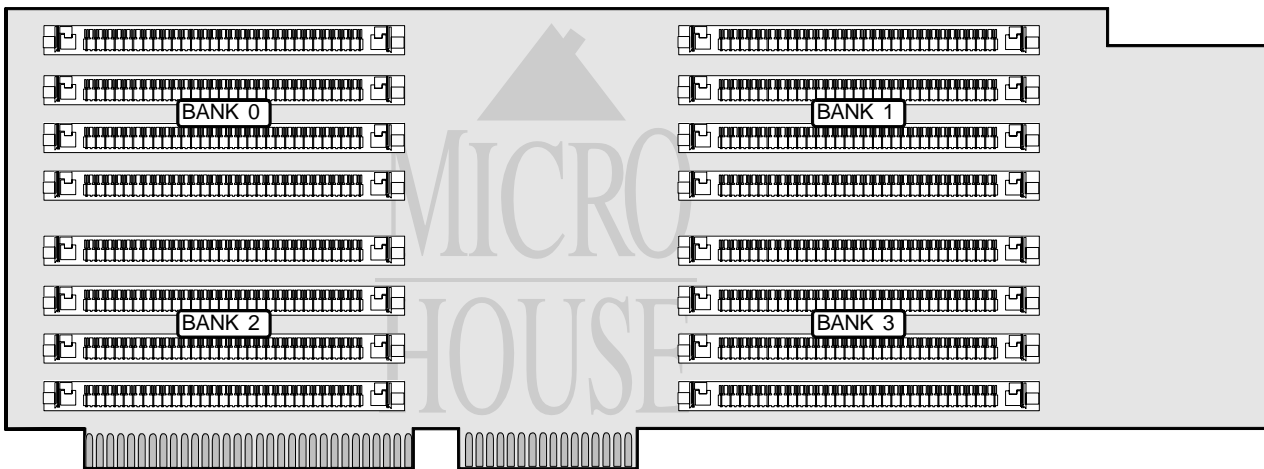
STEP 486 GATE ARRAY (EV-8038)

... continued from previous page

USER CONFIGURABLE SETTINGS		
Function	Jumper	Position
í Parallel port interrupt select IRQ7	J18	pins 5 & 6 closed
Parallel port interrupt select IRQ5	J18	pins 3 & 4 closed
Parallel port interrupt select IRQ9	J18	pins 1 & 2 closed
í Serial port COM1 interrupt select IRQ4	J19	pins 5 & 6 closed
Serial port COM1 interrupt select IRQ3	J19	pins 3 & 4 closed
Serial port COM1 interrupt select IRQ5	J19	pins 7 & 8 closed
Serial port COM1 interrupt select IRQ9	J19	pins 1 & 2 closed
í Serial port COM2 interrupt select IRQ3	J19	pins 11 & 12 closed
Serial port COM2 interrupt select IRQ4	J19	pins 13 & 14 closed
Serial port COM2 interrupt select IRQ5	J19	pins 15 & 16 closed
Serial port COM2 interrupt select IRQ9	J19	pins 9 & 10 closed

CACHE CONFIGURATION		
Size	Bank 0	Bank 1
128KB	(5) 32K x 8	NONE
256KB	(5) 32K x 8	(5) 32K x 8

CACHE JUMPER CONFIGURATION	
Size	J17
128KB	Open
256KB	Closed



Continued on next page . . .

## EVEREX SYSTEMS, INC.

## STEP 486 GATE ARRAY (EV-8038)

... continued from previous page

DRAM CONFIGURATION				
Size	Bank 0	Bank 1	Bank 2	Bank 3
4MB	(4) 256K x 9	(4) 256K x 9	(4) 256K x 9	(4) 256K x 9
4MB	(4) 1M x 9	NONE	NONE	NONE
8MB	(4) 1M x 9	(4) 1M x 9	NONE	NONE
10MB	(4) 1M x 9	(4) 1M x 9	(4) 256K x 9	(4) 256K x 9
16MB	(4) 1M x 9	(4) 1M x 9	(4) 1M x 9	(4) 1M x 9
16MB	(4) 4M x 9	NONE	NONE	NONE
32MB	(4) 4M x 9	(4) 4M x 9	NONE	NONE
34MB	(4) 4M x 9	(4) 4M x 9	(4) 256K x 9	(4) 256K x 9
40MB	(4) 4M x 9	(4) 4M x 9	(4) 1M x 9	(4) 1M x 9
64MB	(4) 4M x 9	(4) 4M x 9	(4) 4M x 9	(4) 4M x 9