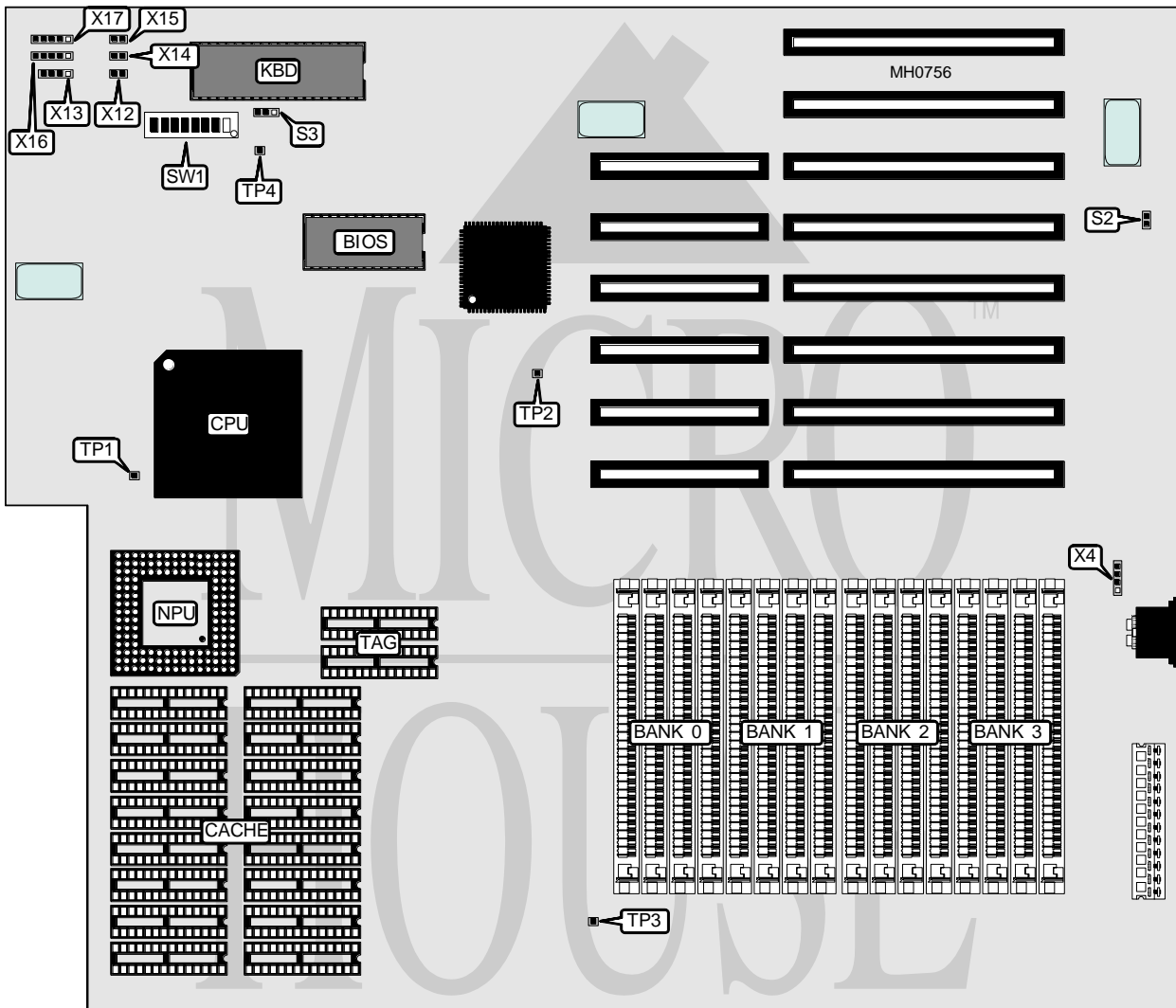


# ARNOS INSTRUMENTS & COMPUTER SYSTEMS COMPANY, INC.

## 486-25C/33C

<b>Processor</b>	80486DX
<b>Processor Speed</b>	25/33MHz
<b>Chip Set</b>	None
<b>Max. Onboard DRAM</b>	32MB
<b>Cache</b>	128KB
<b>BIOS</b>	Phoenix
<b>Dimensions</b>	355mm x 304mm
<b>I/O Options</b>	None
<b>NPU Options</b>	4167



CONNECTIONS			
Purpose	Location	Purpose	Location
External battery	X4	Status display	X15
Turbo switch	X12	Reset switch	X16
Speaker	X13	Power LED & keylock	X17
Turbo LED	X14		

Continued on next page . . .

# ARNOS INSTRUMENTS & COMPUTER SYSTEMS COMPANY, INC.

486-25C/33C

... continued from previous page

USER CONFIGURABLE SETTINGS		
Function	Jumper/Switch	Position
í Factory configured - do not alter	S1	pins 1 & 2 closed
í Battery installed < 5VDC	S2	pins 1 & 2 closed
Battery installed > 5VDC	S2	pins 2 & 3 closed
í CPU speed select switchable at keyboard	S3	pins 2 & 3 closed
CPU speed select switchable at turbo switch	S3	pins 1 & 2 closed
í Factory configured - do not alter	SW1/1	N/A
í NPU disabled	SW1/2	Off
NPU enabled	SW1/2	On
í Factory configured - do not alter	SW1/3	N/A
í Monitor type select monochrome	SW1/4	Off
Monitor type select color	SW1/4	On
í Factory configured - do not alter	TP1	Off
í Factory configured - do not alter	TP2	Off
í Factory configured - do not alter	TP3	Off
í Factory configured - do not alter	TP4	Off
Note: The location of S1 is unidentified.		

DRAM CONFIGURATION				
Size	Bank 0	Bank 1	Bank 2	Bank 3
4MB <sup>2</sup>	(4) 1M x 9	NONE	NONE	NONE
8MB <sup>2</sup>	(4) 1M x 9	(4) 1M x 9	NONE	NONE
12MB <sup>2</sup>	(4) 1M x 9	(4) 1M x 9	(4) 1M x 9	NONE
16MB <sup>1</sup>	(4) 1M x 9	(4) 1M x 9	(4) 1M x 9	(4) 1M x 9
16MB <sup>2</sup>	(4) 1M x 9	(4) 1M x 9	(4) 1M x 9	(4) 1M x 9
16MB <sup>1</sup>	(4) 4M x 9	NONE	NONE	NONE
16MB <sup>2</sup>	(4) 4M x 9	NONE	NONE	NONE
20MB <sup>2</sup>	(4) 4M x 9	(4) 1M x 9	NONE	NONE
24MB <sup>2</sup>	(4) 4M x 9	(4) 1M x 9	(4) 1M x 9	NONE
28MB <sup>2</sup>	(4) 4M x 9	(4) 1M x 9	(4) 1M x 9	(4) 1M x 9
32MB <sup>1</sup>	(4) 4M x 9	(4) 4M x 9	NONE	NONE
Note <sup>1</sup> : These memory configurations do not utilize 256KB remapping.				
Note <sup>2</sup> : These memory configurations utilize 256KB memory remapping.				
Due to remapping, system memory count on boot-up will reflect 256KB less than actual.				

Continued on next page ...

## ARNOS INSTRUMENTS &amp; COMPUTER SYSTEMS COMPANY, INC.

486-25C/33C

... continued from previous page

DRAM SWITCH CONFIGURATION				
Size	SW1/5	SW1/6	SW1/7	SW1/8
4MB <sup>2</sup>	On	On	On	On
8MB <sup>2</sup>	On	On	On	Off
12MB <sup>2</sup>	On	On	Off	On
16MB <sup>1</sup>	On	On	Off	Off
16MB <sup>2</sup>	On	Off	On	Off
16MB <sup>1</sup>	On	Off	Off	On
16MB <sup>2</sup>	On	Off	Off	Off
20MB <sup>2</sup>	Off	On	On	On
24MB <sup>2</sup>	Off	On	Off	On
28MB <sup>2</sup>	Off	On	Off	Off
32MB <sup>1</sup>	Off	Off	On	On

Note<sup>1</sup>: These memory configurations do not utilize 256KB remapping.  
 Note<sup>2</sup>: These memory configurations utilize 256KB memory remapping.  
 Due to remapping, system memory count on boot-up will reflect 256KB less than actual.

CACHE CONFIGURATION		
Size	Bank 0	TAG
128KB	(16) 8K x 8	(2) 8K x 8