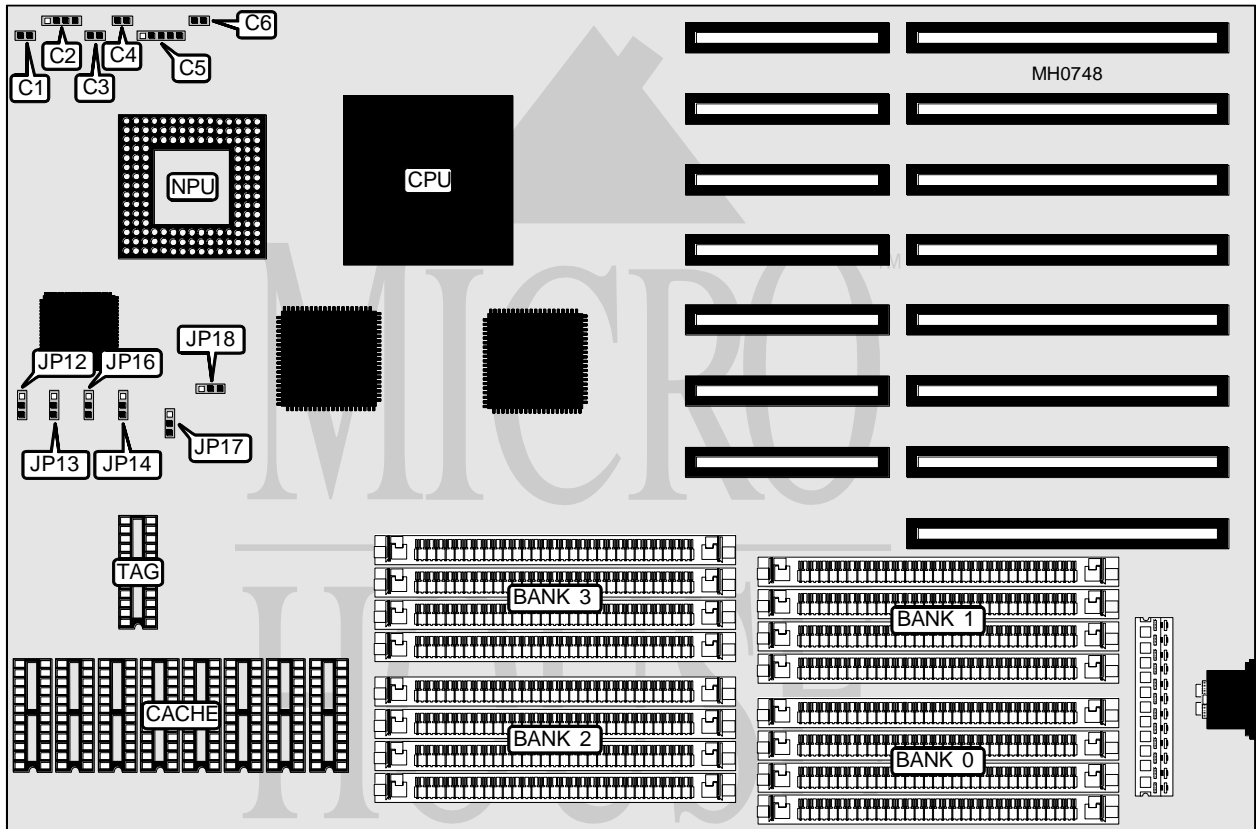


# EMPAC INTERNATIONAL ERI MAGNUM CACHE 486

<b>Processor</b>	80486DX
<b>Processor Speed</b>	40MHz
<b>Chip Set</b>	C & T/OPTI
<b>Max. Onboard DRAM</b>	64MB
<b>Cache</b>	64/256/1024KB
<b>BIOS</b>	AMI
<b>Dimensions</b>	330mm x 221mm
<b>I/O Options</b>	None
<b>NPU Options</b>	4167



CONNECTIONS			
Purpose	Location	Purpose	Location
Reset switch	C1	Turbo switch	C4
Speaker	C2	Power LED & keylock	C5
Turbo LED	C3		

Continued on next page . . .

# EMPAC INTERNATIONAL

## ERI MAGNUM CACHE 486

... continued from previous page

USER CONFIGURABLE SETTINGS		
Function	Jumper	Position
í Monitor type select color	C6	Closed
Monitor type select monochrome	C6	Open

DRAM CONFIGURATION				
Size	Bank 0	Bank 1	Bank 2	Bank 3
1MB	(4) 256K x 9	NONE	NONE	NONE
2MB	(4) 256K x 9	(4) 256K x 9	NONE	NONE
3MB	(4) 256K x 9	(4) 256K x 9	(4) 256K x 9	NONE
4MB	(4) 256K x 9	(4) 256K x 9	(4) 256K x 9	(4) 256K x 9
4MB	(4) 1M x 9	NONE	NONE	NONE
9MB	(4) 1M x 9	(4) 1M x 9	(4) 256K x 9	NONE
10MB	(4) 1M x 9	(4) 1M x 9	(4) 256K x 9	(4) 256K x 9
12MB	(4) 1M x 9	(4) 1M x 9	(4) 1M x 9	NONE
16MB	(4) 1M x 9	(4) 1M x 9	(4) 1M x 9	(4) 1M x 9
16MB	(4) 4M x 9	NONE	NONE	NONE
18MB	(4) 256K x 9	(4) 256K x 9	(4) 4M x 9	NONE
24MB	(4) 1M x 9	(4) 1M x 9	(4) 4M x 9	NONE
32MB	(4) 4M x 9	(4) 4M x 9	NONE	NONE
33MB	(4) 4M x 9	(4) 4M x 9	(4) 256K x 9	NONE
34MB	(4) 4M x 9	(4) 4M x 9	(4) 256K x 9	(4) 256K x 9
40MB	(4) 4M x 9	(4) 4M x 9	(4) 1M x 9	(4) 1M x 9
48MB	(4) 4M x 9	(4) 4M x 9	(4) 4M x 9	NONE
64MB	(4) 4M x 9	(4) 4M x 9	(4) 4M x 9	(4) 4M x 9

CACHE CONFIGURATION		
Size	Bank 0	TAG
64KB	(8) 8K x 8	(1) 8K x 8
256KB	(8) 32K x 8	(1) 32K x 8
1MB	(8) 128K x 8	(1) 128K x 8

CACHE JUMPER CONFIGURATION						
Size	JP12	JP13	JP14	JP16	JP17	JP18
64KB	1 & 2	1 & 2	2 & 3	1 & 2	2 & 3	1 & 2
256KB	2 & 3	2 & 3	1 & 2	1 & 2	1 & 2	1 & 2
1MB	2 & 3	2 & 3	1 & 2	2 & 3	1 & 2	1 & 2

Note: Pins designated should be in the closed position.