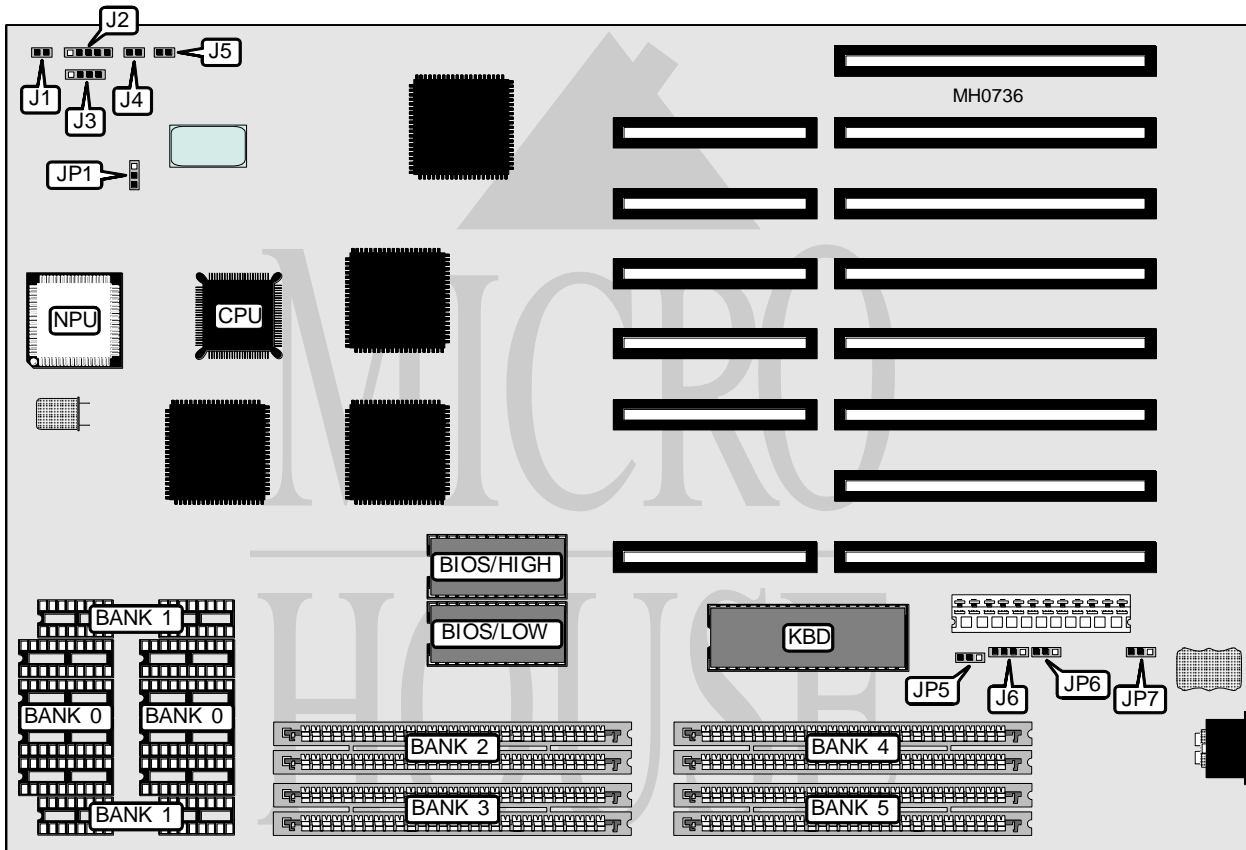


WYSE TECHNOLOGY, INC.

WYSE PC MODEL 3016SX

Processor	80386SX
Processor Speed	16MHz
Chip Set	WYSE
Max. Onboard DRAM	8MB
Cache	None
BIOS	WYSE
Dimensions	330mm x 218mm
I/O Options	None
NPU Options	80387SX



CONNECTIONS			
Purpose	Location	Purpose	Location
Reset switch	J1	Turbo switch	J4
Power LED & keylock	J2	Turbo LED	J5
Speaker	J3	External battery	J6

Continued on next page . . .

WYSE TECHNOLOGY, INC.
WYSE PC MODEL 3016SX

... continued from previous page

USER CONFIGURABLE SETTINGS		
Function	Jumper	Position
í Factory configured - do not alter	JP1	pins 2 & 3 closed
í Monitor type select color	JP5	pins 1 & 2 closed
Monitor type select monochrome	JP5	pins 2 & 3 closed
í Battery type select internal	JP6	pins 1 & 2 closed
Battery type select external	JP6	pins 2 & 3 closed
í Power good signal detect from power supply	JP7	pins 2 & 3 closed
Power good signal detect from board	JP7	pins 1 & 2 closed

DRAM CONFIGURATION						
Size	Bank 0	Bank 1	Bank 2	Bank 3	Bank 4	Bank 5
1MB	(8) 44256	(4) 41256	NONE	NONE	NONE	NONE
2MB	(8) 44256	(4) 41256	NONE	NONE	(2) 256K x 9	(2) 256K x 9
3MB	(8) 44256	(4) 41256	NONE	NONE	(2) 1M x 9	NONE
4MB	NONE	NONE	(2) 1M x 9	(2) 1M x 9	NONE	NONE
5MB	(8) 44256	(4) 41256	NONE	NONE	(2) 1M x 9	(2) 1M x 9
5MB	NONE	NONE	(2) 256K x 9	(2) 256K x 9	(2) 1M x 9	(2) 1M x 9
6MB	NONE	NONE	(2) 1M x 9	(2) 1M x 9	(2) 1M x 9	NONE
8MB	NONE	NONE	(2) 1M x 9	(2) 1M x 9	(2) 1M x 9	(2) 1M x 9

Note: Banks 0 and 1 are factory installed and are not configurable.