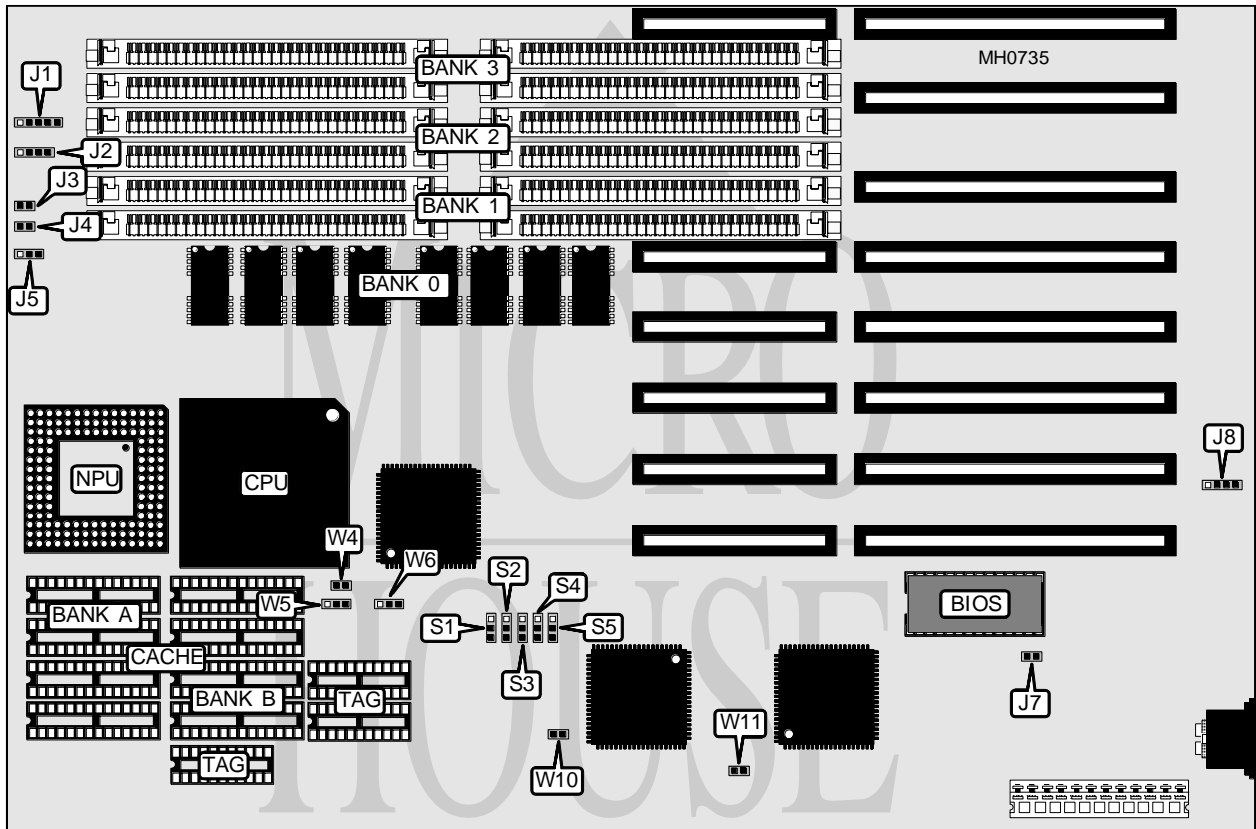


JATON CORPORATION

J A M - 4 0 0 1

Processor	80486SX/80487SX/80486DX
Processor Speed	33/40/50MHz
Chip Set	UMC
Max. Onboard DRAM	Model 1: 10MB
	Model 2: 40MB
Cache	64/128/256KB
BIOS	AMI
Dimensions	330mm x 218mm
I/O Options	None
NPU Options	4167



CONNECTIONS			
Purpose	Location	Purpose	Location
Power LED & keylock	J1	Turbo switch	J4
Speaker	J2	Turbo LED	J5
Reset switch	J3	External battery	J8

Continued on next page . . .

JATON CORPORATION

J A M - 4 0 0 1

... continued from previous page

USER CONFIGURABLE SETTINGS

Function	Jumper	Position
í Monitor type select color	J7	Closed
Monitor type select monochrome	J7	Open
í Battery type select internal	J8	pins 1 & 2 closed
Battery type select external	J8	Closed

DRAM CONFIGURATION (MODEL 1)

Size	Bank 0	Bank 1	Bank 2	Bank 3
1MB	(8) 44256	NONE	NONE	NONE
2MB	(8) 44256	(4) 256K x 9	NONE	NONE
3MB	(8) 44256	(4) 256K x 9	(4) 256K x 9	NONE
4MB	(8) 44256	(4) 256K x 9	(4) 256K x 9	(4) 256K x 9
5MB	(8) 44256	(4) 1M x 9	NONE	NONE
6MB	(8) 44256	(4) 256K x 9	(4) 1M x 9	NONE
9MB	(8) 44256	(4) 1M x 9	(4) 1M x 9	NONE
10MB	(8) 44256	(4) 256K x 9	(4) 1M x 9	(4) 1M x 9

Note: Bank 0 is factory installed and is not configurable.

DRAM CONFIGURATION (MODEL 2)

Size	Bank 0	Bank 1	Bank 2	Bank 3
4MB	(8) 441000	NONE	NONE	NONE
8MB	(8) 441000	(4) 1M x 9	NONE	NONE
12MB	(8) 441000	(4) 1M x 9	(4) 1M x 9	NONE
16MB	(8) 441000	(4) 1M x 9	(4) 1M x 9	(4) 1M x 9
20MB	(8) 441000	(4) 4M x 9	NONE	NONE
24MB	(8) 441000	(4) 1M x 9	(4) 4M x 9	NONE
36MB	(8) 441000	(4) 4M x 9	(4) 4M x 9	NONE
40MB	(8) 441000	(4) 1M x 9	(4) 4M x 9	(4) 4M x 9

Note: Bank 0 is factory installed and is not configurable.

CACHE CONFIGURATION

Size	Bank A	Bank B	TAG
64KB	(4) 8K x 8	(4) 8K x 8	(3) 16K x 4
128KB	(4) 32K x 8	NONE	(3) 16K x 4
256KB	(4) 32K x 8	(4) 32K x 8	(3) 16K x 4

CACHE JUMPER CONFIGURATION

Size	S1	S2	S3	S4	S5
64KB	1 & 2	1 & 2	1 & 2	Open	1 & 2
128KB	1 & 2	2 & 3	2 & 3	1 & 2	2 & 3
256KB	2 & 3	2 & 3	1 & 2	2 & 3	2 & 3

Note: Pins designated should be in the closed position.

Continued on next page...

JATON CORPORATION**J A M - 4 0 0 1***... continued from previous page*

CPU TYPE CONFIGURATION					
Type	W4	W5	W6	W10	W11
80486SX	1 & 2	1 & 2	1 & 2	Closed	Open
80487SX	Open	Open	2 & 3	Open	Closed
80486DX	1 & 2	2 & 3	1 & 2	Closed	Open

Note: Pins designated should be in the closed position.