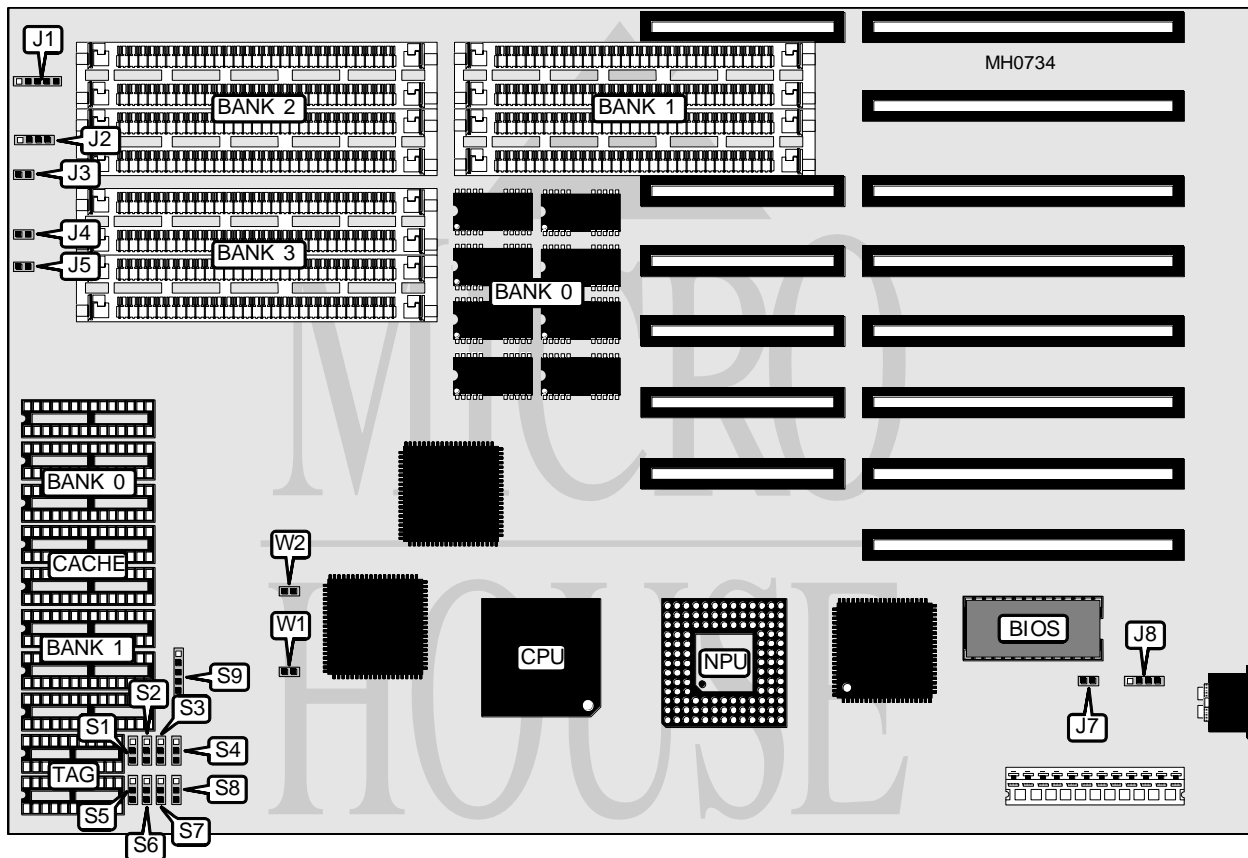


# JATON CORPORATION

## J A M - 3 0 0 2

<b>Processor</b>	80386DX
<b>Processor Speed</b>	33/40MHz
<b>Chip Set</b>	ETEQ
<b>Max. Onboard DRAM</b>	Model 1: 49MB Model 2: 52MB
<b>Cache</b>	32/64/128/256KB
<b>BIOS</b>	AMI
<b>Dimensions</b>	330mm x 218mm
<b>I/O Options</b>	None
<b>NPU Options</b>	80387/3167



CONNECTIONS			
Purpose	Location	Purpose	Location
Power LED & keylock	J1	Turbo switch	J4
Speaker	J2	Turbo LED	J5
Reset switch	J3	External battery	J8

Continued on next page . . .

# JATON CORPORATION

## J A M - 3 0 0 2

... continued from previous page

USER CONFIGURABLE SETTINGS		
Function	Jumper	Position
í Parity check enabled	J6	Closed
Parity check disabled	J6	Open
í Monitor type select color	J7	Closed
Monitor type select monochrome	J7	Open
í Battery type select internal	J8	pins 1 & 2 closed
Battery type select external	J8	Closed

DRAM CONFIGURATION (MODEL 1)				
Size	Bank 0	Bank 1	Bank 2	Bank 3
1MB	(8) 44256	NONE	NONE	NONE
2MB	(8) 44256	(4) 256K x 9	NONE	NONE
3MB	(8) 44256	(4) 256K x 9	(4) 256K x 9	NONE
4MB	(8) 44256	(4) 256K x 9	(4) 256K x 9	(4) 256K x 9
6MB	(8) 44256	(4) 256K x 9	(4) 1M x 9	NONE
7MB	(8) 44256	(4) 256K x 9	(4) 256K x 9	(4) 1M x 9
10MB	(8) 44256	(4) 256K x 9	(4) 1M x 9	(4) 1M x 9
37MB	(8) 44256	(4) 1M x 9	(4) 4M x 9	(4) 4M x 9
49MB	(8) 44256	(4) 4M x 9	(4) 4M x 9	(4) 4M x 9

Note: Bank 0 is factory installed and is not configurable.

DRAM CONFIGURATION (MODEL 2)				
Size	Bank 0	Bank 1	Bank 2	Bank 3
4MB	(8) 441000	NONE	NONE	NONE
5MB	(8) 441000	(4) 256K x 9	NONE	NONE
8MB	(8) 441000	(4) 1M x 9	NONE	NONE
9MB	(8) 441000	(4) 1M x 9	(4) 256K x 9	NONE
10MB	(8) 441000	(4) 1M x 9	(4) 256K x 9	(4) 256K x 9
12MB	(8) 441000	(4) 1M x 9	(4) 1M x 9	NONE
13MB	(8) 441000	(4) 1M x 9	(4) 1M x 9	(4) 256K x 9
16MB	(8) 441000	(4) 1M x 9	(4) 1M x 9	(4) 1M x 9
20MB	(8) 441000	(4) 4M x 9	NONE	NONE
24MB	(8) 441000	(4) 1M x 9	(4) 4M x 9	NONE
28MB	(8) 441000	(4) 1M x 9	(4) 1M x 9	(4) 4M x 9
36MB	(8) 441000	(4) 4M x 9	(4) 4M x 9	
40MB	(8) 441000	(4) 1M x 9	(4) 4M x 9	(4) 4M x 9
52MB	(8) 441000	(4) 4M x 9	(4) 4M x 9	(4) 4M x 9

Note: Bank 0 is factory installed and is not configurable.

CACHE CONFIGURATION			
Size	Bank 0	Bank 1	TAG
32KB	(4) 8K x 8	NONE	(2) 16K x 4
64KB	(4) 8K x 8	(4) 8K x 8	(2) 16K x 4
128KB	(4) 32K x 8	NONE	(2) 16K x 4
256KB	(4) 32K x 8	(4) 32K x 8	(2) 16K x 4

Continued on next page . . .

# JATON CORPORATION

## J A M - 3 0 0 2

... continued from previous page

CACHE JUMPER CONFIGURATION									
Size	S1	S2	S3	S4	S5	S6	S7	S8	S9
32KB	1 & 2	1 & 2	1 & 2	2 & 3	2 & 3	1 & 2	1 & 2	1 & 2	2 & 3
64KB	2 & 3	1 & 2	1 & 2	2 & 3	1 & 2	1 & 2	1 & 2	1 & 2	1 & 2
128KB	2 & 3	2 & 3	1 & 2	1 & 2	1 & 2	1 & 2	1 & 2	2 & 3	4 & 5
256KB	2 & 3	2 & 3	2 & 3	1 & 2	1 & 2	2 & 3	2 & 3	2 & 3	5 & 6

Note: Pins designated should be in the closed position.

NPU CONFIGURATION		
Type	W1	W2
None	Open	Open
80387	Open	Closed
3167	Closed	Open

Note: If jumpers W1 & W2 are not present, the NPU will be automatically detected.