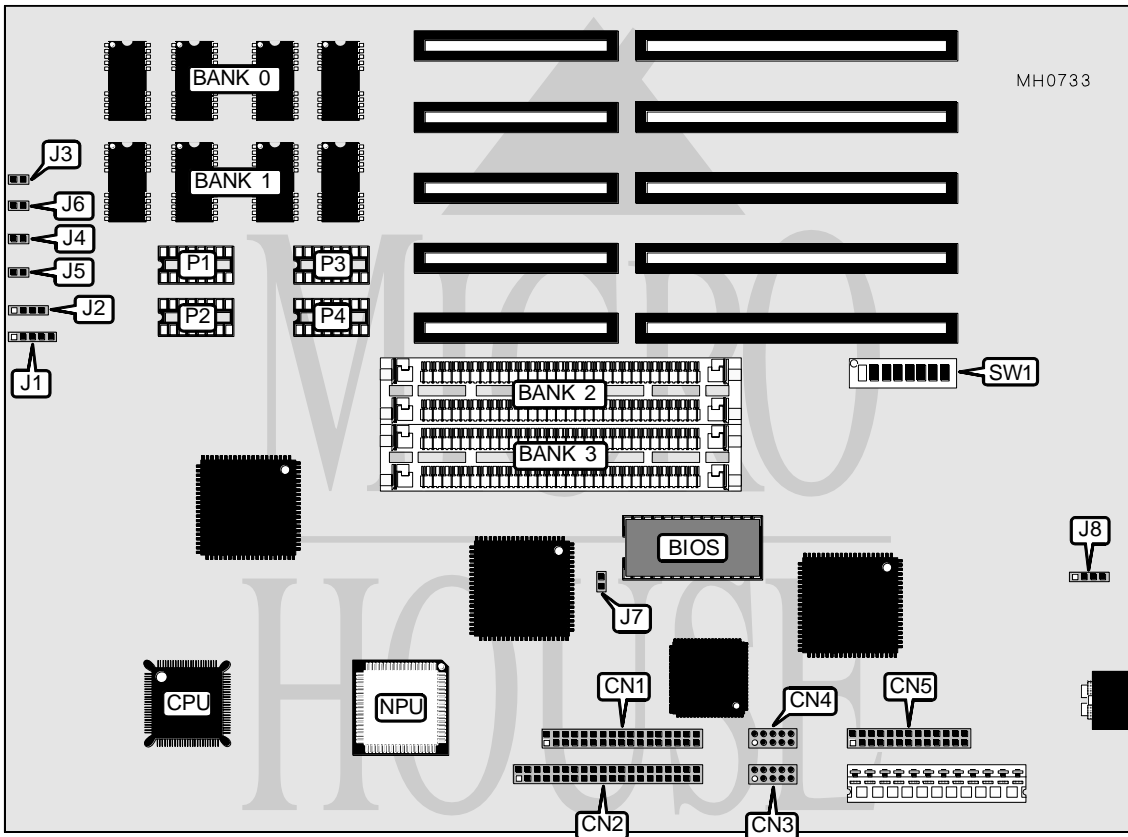


JATON CORPORATION

J A M - 3 3 0 2

Processor	80386SX
Processor Speed	16/25MHz
Chip Set	Intel
Max. Onboard DRAM	Model 1: 17MB Model 2: 20MB
Cache	None
BIOS	Quadtel
Dimensions	330mm x 218mm
I/O Options	Parallel port, serial ports (2), floppy drive interface, IDE interface
NPU Options	80387SX



CONNECTIONS			
Purpose	Location	Purpose	Location
Floppy drive interface	CN1	Speaker	J2
IDE interface	CN2	Reset switch	J3
Serial port 1	CN3	Turbo switch	J4
Serial port 2	CN4	Turbo LED	J5
Parallel port	CN5	IDE interface LED	J6
Power LED & keylock	J1	External battery	J8

Continued on next page . . .

JATON CORPORATION

J A M - 3 3 0 2

... continued from previous page

USER CONFIGURABLE SETTINGS		
Function	Jumper/Switch	Position
í Floppy drives select normal designation (A-B)	J7	Open
Floppy drives select swap designation (B-A)	J7	Closed
í Battery select internal	J8	pins 1 & 2 closed
Battery select external	J8	Closed
í IDE interface enabled	SW1/1	On
IDE interface disabled	SW1/1	Off
í Floppy drive interface enabled	SW1/2	On
Floppy drive interface disabled	SW1/2	Off
í Parallel port select LPT1 at 378H	SW1/3	On
Parallel port select LPT2 at 278H	SW1/3	Off
í Serial port 1 interrupt level: IRQ 4 at 3F8H-3FFH enabled	SW1/4	On
Serial port 1 interrupt level: IRQ 4 at 3F8H-3FFH disabled	SW1/4	Off
í Serial port 2 interrupt level: IRQ 3 at 2F8H-2FFH enabled	SW1/5	On
Serial port 2 interrupt level: IRQ 3 at 2F8H-2FFH disabled	SW1/5	Off
í Parallel printer port enabled	SW1/6	On
Parallel printer port disabled	SW1/6	Off
í Parity check enabled	SW1/7	On
Parity check disabled	SW1/7	Off
í Monitor type select color	SW1/8	On
Monitor type select monochrome	SW1/8	Off

DRAM CONFIGURATION (MODEL 1)				
Size	Bank 0	Bank 1	Bank 2	Bank 3
1MB	(4) 44256	(4) 44256	NONE	NONE
1.5MB	(4) 44256	(4) 44256	(2) 256K x 9	NONE
2MB	(4) 44256	(4) 44256	(2) 256K x 9	(2) 256K x 9
3MB	(4) 44256	(4) 44256	(2) 1M x 9	NONE
5MB	(4) 44256	(4) 44256	(2) 1M x 9	(2) 1M x 9
9MB	(4) 44256	(4) 44256	(2) 4M x 9	NONE
17MB	(4) 44256	(4) 44256	(2) 4M x 9	(2) 4M x 9

DRAM CONFIGURATION(MODEL 2)				
Size	Bank 0	Bank 1	Bank 2	Bank 3
4MB	(4) 441000	(4) 441000	NONE	NONE
4.5MB	(4) 441000	(4) 441000	(2) 256K x 9	NONE
5MB	(4) 441000	(4) 441000	(2) 256K x 9	(2) 256K x 9
6MB	(4) 441000	(4) 441000	(2) 1M x 9	NONE
8MB	(4) 441000	(4) 441000	(2) 1M x 9	(2) 1M x 9
12MB	(4) 441000	(4) 441000	(2) 4M x 9	NONE
20MB	(4) 441000	(4) 441000	(2) 4M x 9	(2) 4M x 9