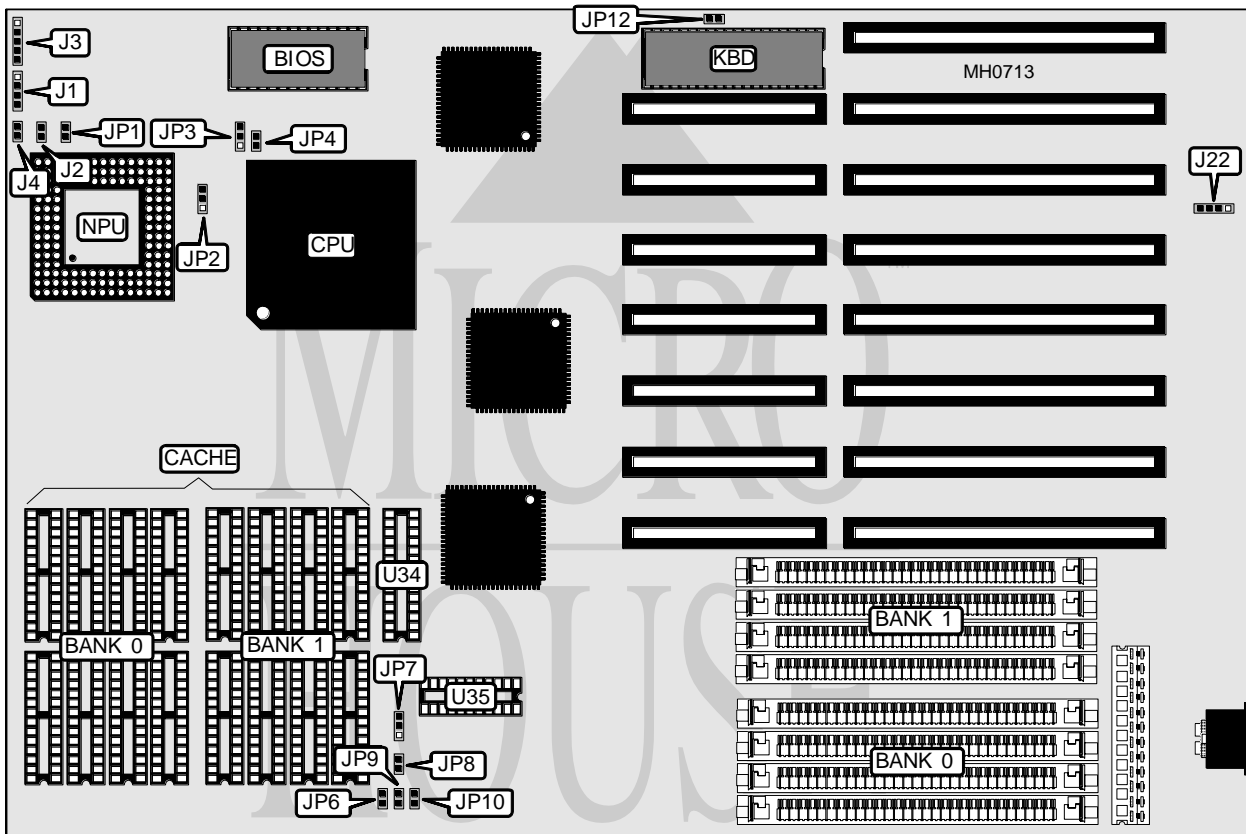


# DATAEXPERT CORPORATION

## OPTI-486WB

<b>Processor</b>	80486SX/80486DX
<b>Processor Speed</b>	25/33MHz
<b>Chip Set</b>	OPTI
<b>Max. Onboard DRAM</b>	32MB
<b>Cache</b>	64/128/256/512KB
<b>BIOS</b>	AMI
<b>Dimensions</b>	330mm x 218mm
<b>I/O Options</b>	None
<b>NPU Options</b>	4167



### CONNECTIONS

Purpose	Location	Purpose	Location
Speaker	J1	Reset switch	J4
Turbo switch	J2	External battery	J22
Power LED & keylock	J3	Turbo LED	JP1

Note: On some board revisions, JP1, J2, and J4 are aligned to the left of the NPU.

*Continued on next page . . .*

# DATAEXPERT CORPORATION

## OPTI-486WB

... continued from previous page

USER CONFIGURABLE SETTINGS		
Function	Jumper	Position
í CMOS memory normal operation	J22	pins 2 & 3 closed
CMOS memory clear	J22	pins 3 & 4 closed
í Monitor type select color	JP12	Closed
Monitor type select monochrome	JP12	Open

DRAM CONFIGURATION		
Size	Bank 0	Bank 1
1MB	(4) 256K x 9	NONE
2MB	(4) 256K x 9	(4) 256K x 9
4MB	(4) 1M x 9	NONE
5MB	(4) 256K x 9	(4) 1M x 9
8MB	(4) 1M x 9	(4) 1M x 9
16MB	(4) 4M x 9	NONE
20MB	(4) 1M x 9	(4) 4M x 9
32MB	(4) 4M x 9	(4) 4M x 9

CACHE CONFIGURATION				
Size	Bank 0	Bank 1	TAG (U34)	TAG (U35)
64KB	(8) 8K x 8	NONE	(1) 8K x 8	(1) 64K x 1
128KB	(8) 8K x 8	(8) 8K x 8	(1) 8K x 8	(1) 64K x 1
256KB	(8) 32K x 8	NONE	(1) 32K x 8	(1) 64K x 1
512KB	(8) 32K x 8	(8) 32K x 8	(1) 32K x 8	(1) 64K x 1

CACHE JUMPER CONFIGURATION					
Size	JP6	JP7	JP8	JP9	JP10
64KB	Open	2 & 3	Open	Open	Open
128KB	Closed	2 & 3	Open	Open	Closed
256KB	Closed	2 & 3	Open	Closed	Closed
512KB	Closed	1 & 2	Closed	Closed	Closed

Note: Pins designated should be in the closed position.

CACHE CONFIGURATION				
Size	Bank 0	Bank 1	TAG (U34)	TAG (U35)
64KB	(8) 8K x 8	NONE	(1) 8K x 8	(1) 64K x 1
128KB	(8) 8K x 8	(8) 8K x 8	(1) 8K x 8	(1) 64K x 1
256KB	(8) 32K x 8	NONE	(1) 32K x 8	(1) 64K x 1
512KB	(8) 32K x 8	(8) 32K x 8	(1) 32K x 8	(1) 64K x 1

CPU TYPE CONFIGURATION			
Type	JP2	JP3	JP4
80486SX	Open	pins 1 & 2 closed	Open
80486DX	pins 1 & 2 closed	pins 2 & 3 closed	Closed