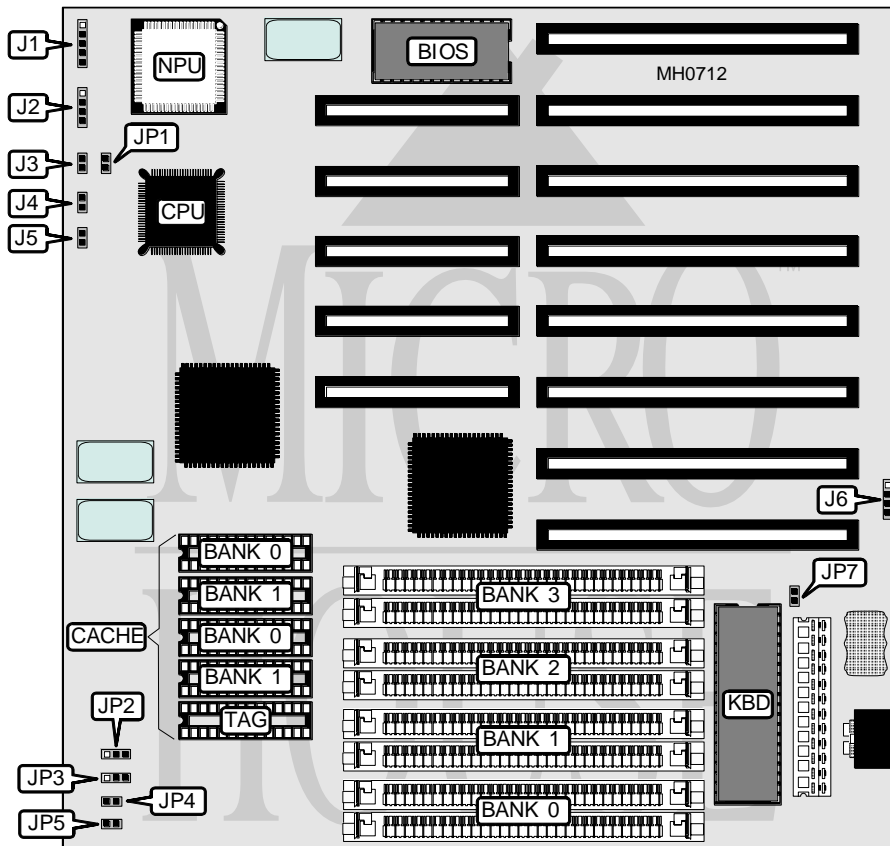


DATAEXPERT CORPORATION OPTI-80386-SX CACHE

Processor 80386SX
Processor Speed 25MHz
Chip Set OPTI
Max. Onboard DRAM 16MB
Cache 16/32/64KB
BIOS AMI
Dimensions 220mm x 220mm
I/O Options None
NPU Options 80387SX



CONNECTIONS			
Purpose	Location	Purpose	Location
Power LED & keylock	J1	Turbo LED	J4
Speaker	J2	Reset switch	J5
Turbo switch	J3	External battery	J6

Continued on next page . . .

DATAEXPERT CORPORATION

OPTI-80386-SX CACHE

... continued from previous page

USER CONFIGURABLE SETTINGS		
Function	Jumper	Position
í Monitor type select color	JP7	Closed
Monitor type select monochrome	JP7	Open
í NPU mode select asynchronous with CPU	JP1	Closed
NPU mode select synchronous with CPU	JP1	Open

DRAM CONFIGURATION				
Size	Bank 0	Bank 1	Bank 2	Bank 3
1MB	(2) 256K x 9	(2) 256K x 9	NONE	NONE
2MB	(2) 256K x 9	(2) 256K x 9	(2) 256K x 9	(2) 256K x 9
2MB	(2) 1M x 9	NONE	NONE	NONE
3MB	(2) 256K x 9	(2) 256K x 9	(2) 1M x 9	NONE
4MB	(2) 1M x 9	(2) 1M x 9	NONE	NONE
5MB	(2) 256K x 9	(2) 256K x 9	(2) 1M x 9	(2) 1M x 9
6MB	(2) 1M x 9	(2) 1M x 9	(2) 1M x 9	NONE
8MB	(2) 1M x 9	(2) 1M x 9	(2) 1M x 9	(2) 1M x 9
9MB	(2) 256K x 9	(2) 256K x 9	(2) 4M x 9	NONE
10MB	(2) 1M x 9	(2) 4M x 9	NONE	NONE
12MB	(2) 1M x 9	(2) 1M x 9	(2) 4M x 9	NONE
16MB	(2) 4M x 9	(2) 4M x 9	NONE	NONE

CACHE CONFIGURATION			
Size	Bank 0	Bank 1	TAG
16KB	(2) 8K x 8	NONE	(1) 8K x 8
32KB	(2) 8K x 8	(2) 8K x 8	(1) 8K x 8
64KB	(2) 32K x 8	NONE	(1) 32K x 8

CACHE JUMPER CONFIGURATION				
Size	JP2	JP3	JP4	JP5
16KB	pins 1 & 2 closed	pins 1 & 2 closed	Open	Open
32KB	pins 1 & 2 closed	pins 2 & 3 closed	Closed	Open
64KB	pins 2 & 3 closed	pins 2 & 3 closed	Open	Closed