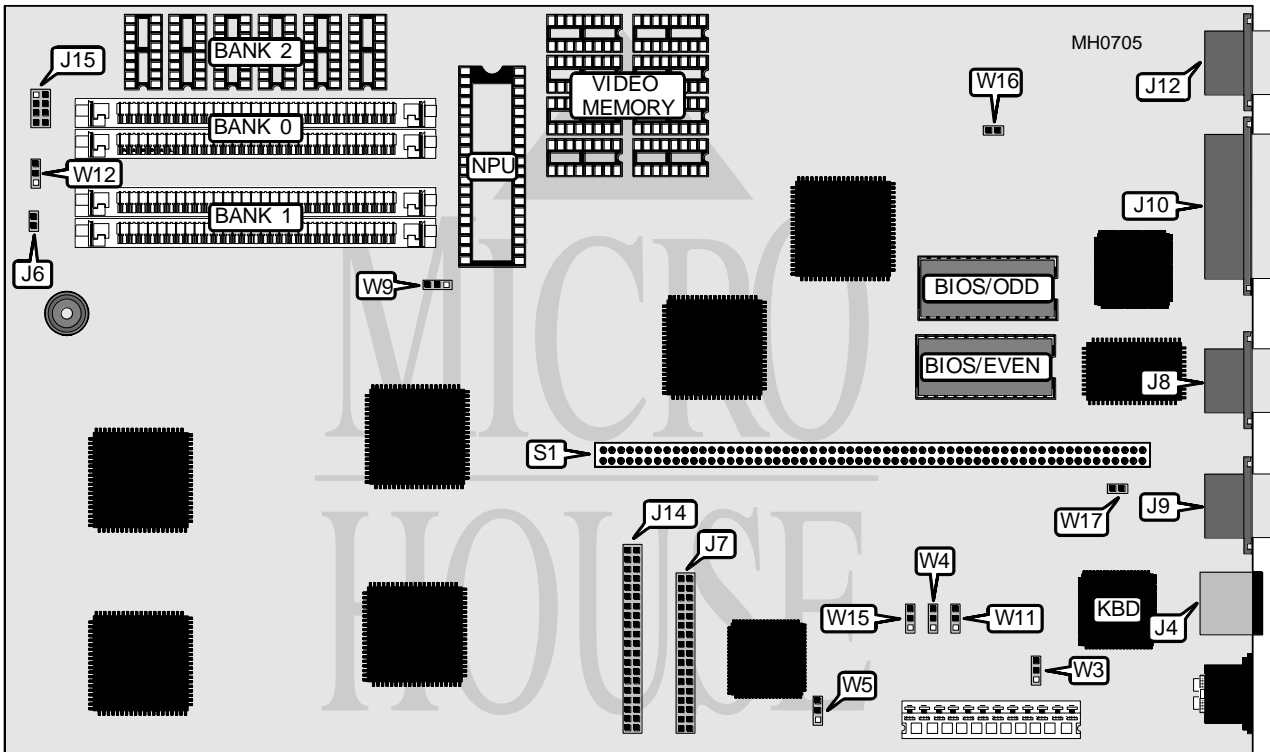


WESTERN DIGITAL CORPORATION

W D 2 8 6 - L P M

Processor	80286
Processor Speed	6/12.5/16MHz
Chip Set	Faraday
Max. Onboard DRAM	4MB
Cache	None
BIOS	Phoenix
Dimensions	330mm x 198mm
I/O Options	Parallel port, serial port (2), bus mouse port, floppy drive interface, video interface, IDE interface, proprietary bus expansion slot
NPU Options	80287



CONNECTIONS			
Purpose	Location	Purpose	Location
Bus mouse port	J4	Parallel port	J10
Reset switch	J6	VGA interface	J12
Floppy drive interface	J7	IDE interface	J14
Serial port 2	J8	IDE interface LED/Keylock	J15
Serial port 1	J9	Local bus expansion slot	S1

Continued on next page . . .

WESTERN DIGITAL CORPORATION

W D 2 8 6 - L P M

... continued from previous page

USER CONFIGURABLE SETTINGS		
Function	Jumper	Position
í Monitor type select color	W3	pins 2 & 3 closed
Monitor type select monochrome	W3	pins 1 & 2 closed
í Floppy drive interface enabled	W4	pins 2 & 3 closed
Floppy drive interface disabled	W4	pins 1 & 2 closed
í Factory configured - do not alter	W5	pins 1 & 2 closed
í NPU speed select 6MHz	W9	pins 2 & 3 closed
NPU speed select 12.5MHz	W9	pins 1 & 2 closed
NPU speed select 16MHz	W9	pins 1 & 2 closed
í Video port (J12) enabled	W11	pins 2 & 3 closed
Video port (J12) disabled	W11	pins 1 & 2 closed
í IDE interface LED enabled	W12	pins 2 & 3 closed
IDE interface LED disabled	W12	pins 1 & 2 closed
í Factory configured - do not alter	W15	pins 2 & 3 closed
í Mouse port interrupt enabled (IRQ12)	W16	Closed
Mouse port interrupt disabled (IRQ12)	W16	Open
í Factory configured - do not alter	W17	Open

DRAM CONFIGURATION		
Size	Bank 0	Bank 1
1MB	(2) 256K x 9	(2) 256K x 9
2MB	(2) 1M x 9	NONE
4MB	(2) 1M x 9	(2) 1M x 9
Note: Bank 2 is an optional 128KB soldered onto the board on the 12MHz version only.		