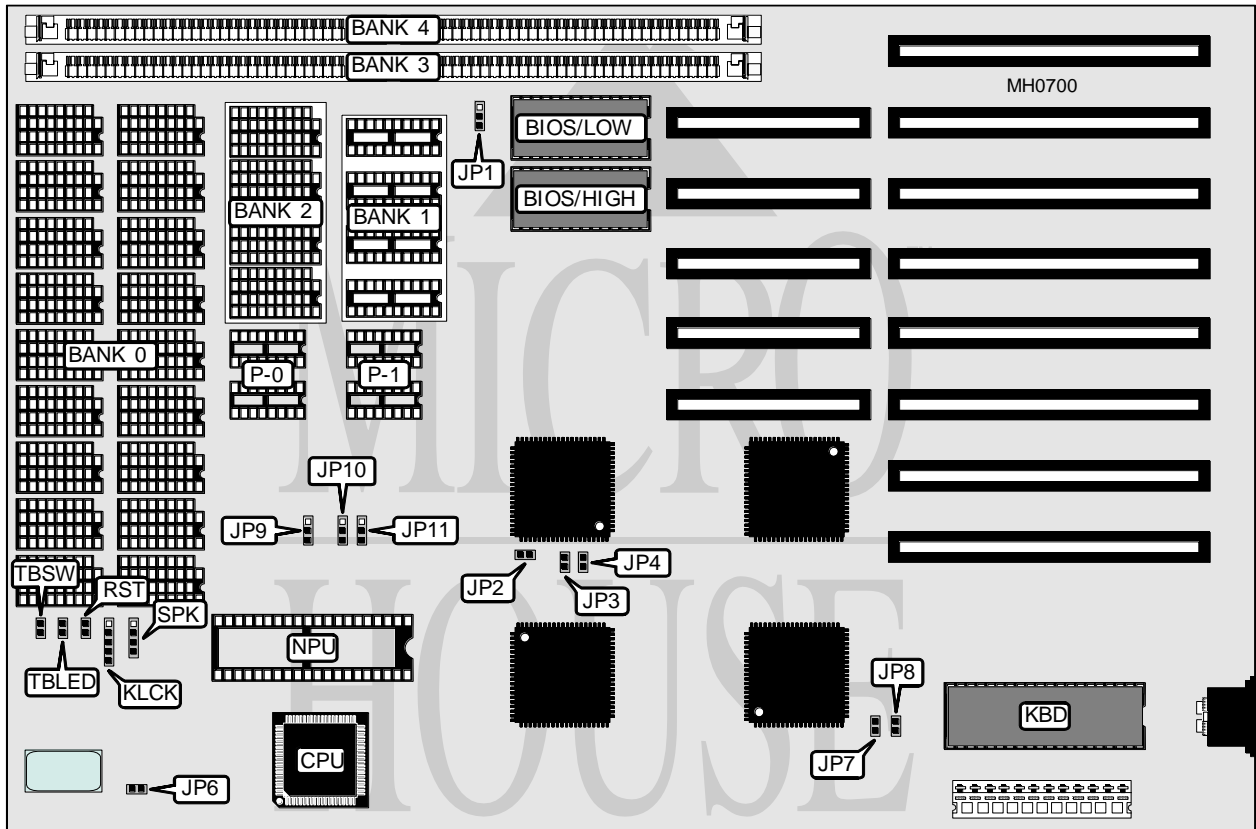


# BIOSTAR MICROTECH INTERNATIONAL CORPORATION

## 286 SYSTEM BOARD

<b>Processor</b>	80286
<b>Processor Speed</b>	10/12MHz
<b>Chip Set</b>	VLSI
<b>Max. Onboard DRAM</b>	4MB
<b>Cache</b>	None
<b>BIOS</b>	AMI/Award/Phoenix
<b>Dimensions</b>	330mm x 218mm
<b>I/O Options</b>	None
<b>NPU Options</b>	80287



CONNECTIONS			
Purpose	Location	Purpose	Location
Power LED & keylock	KLCK	Turbo LED	TBLED
Reset switch	RST	Turbo switch	TBSW
Speaker	SPK		

Continued on next page . . .

# BIOSTAR MICROTECH INTERNATIONAL CORPORATION

## 286 SYSTEM BOARD

... continued from previous page

USER CONFIGURABLE SETTINGS		
Function	Jumper	Location
í BIOS type select 27128	JP1	pins 2 & 3 closed
BIOS type select 27256	JP1	pins 1 & 2 closed
í CPU slow speed select 8MHz	JP6	Closed
CPU slow speed select 6MHz	JP6	Open
í Monitor type select color	JP7	Closed
Monitor type select monochrome	JP7	Open
í DRAM speed select 0 wait states	JP8	Closed
DRAM speed select 1 wait state	JP8	Open

DRAM CONFIGURATION							
Size	Bank 0	Bank 1	P-1	Bank 2	P-2	Bank 3	Bank 4
512KB <sup>1</sup>	(18) 41256	NONE	NONE	NONE	NONE	NONE	NONE
512KB <sup>1</sup>	NONE	(4) 44256	(2) 41256	NONE	NONE	NONE	NONE
512KB <sup>2</sup>	NONE	NONE	NONE	NONE	NONE	(2) 256K x 9	NONE
640KB <sup>1</sup>	(18) 41256	NONE	NONE	(4) 4464	(2) 4164	NONE	NONE
640KB <sup>1</sup>	NONE	(4) 44256	(2) 41256	(4) 4464	(2) 4164	NONE	NONE
640KB <sup>2</sup>	(18) 4164	NONE	NONE	NONE	NONE	(2) 256K x 9	NONE
640KB <sup>2</sup>	NONE	NONE	NONE	(4) 4464	(2) 4164	(2) 256K x 9	NONE
1MB <sup>1</sup>	(18) 41256	NONE	NONE	(2) 44256	(4) 41256	NONE	NONE
1MB <sup>1</sup>	(18) 41256	(4) 44256	(2) 41256	NONE	NONE	NONE	NONE
1MB <sup>2</sup>	NONE	NONE	NONE	NONE	NONE	(2) 256K x 9	(2) 256K x 9
2MB <sup>1</sup>	(18) 411000	NONE	NONE	NONE	NONE	NONE	NONE
2MB <sup>2</sup>	NONE	NONE	NONE	NONE	NONE	(2) 1M x 9	NONE
4MB <sup>1</sup>	(18) 411000	NONE	NONE	NONE	NONE	(2) 1M x 9	NONE
4MB <sup>2</sup>	NONE	NONE	NONE	NONE	NONE	(2) 1M x 9	(2) 1M x 9

Note <sup>1</sup>: Set JP9, JP10, and JP11 pins 2 & 3 closed.  
 Note <sup>2</sup>: Set JP9, JP10, and JP11 pins 1 & 2 closed.

DRAM JUMPER CONFIGURATION			
Size	JP2	JP3	JP4
512KB	Closed	Closed	Closed
640KB	Closed	Closed	Open
1MB	Closed	Open	Closed
2MB	Closed	Open	Open
4MB	Open	Closed	Closed