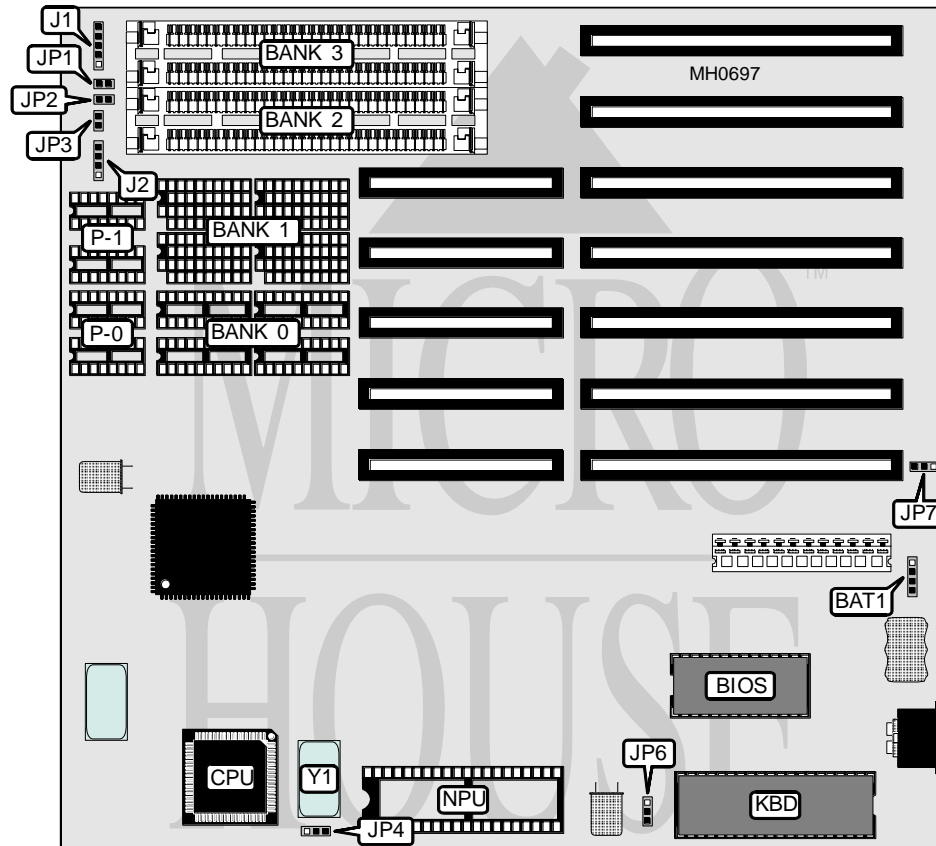


BIOSTAR MICROTECH INTERNATIONAL CORPORATION

M B - 1 2 1 2 C

Processor	80286
Processor Speed	12MHz
Chip Set	C & T
Max. Onboard DRAM	4MB
Cache	None
BIOS	C & T
Dimensions	220mm x 220mm
I/O Options	None
NPU Options	80287



CONNECTIONS			
Purpose	Location	Purpose	Location
Power LED & keylock	J1	Reset switch	JP2
Speaker	J2	Turbo switch	JP3
Turbo LED	JP1	External battery	BAT1

Continued on next page . . .

BIOSTAR MICROTECH INTERNATIONAL CORPORATION

MB - 1 2 1 2 C

... continued from previous page

USER CONFIGURABLE SETTINGS		
Function	Jumper	Position
í NPU mode select synchronous with CPU	JP4	pins 1 & 2 closed
NPU mode select synchronous with oscillator installed at Y1	JP4	pins 2 & 3 closed
í Monitor type select monochrome	JP6	pins 1 & 2 closed
Monitor type select color	JP6	pins 2 & 3 closed
í Power good signal detect from board	JP7	pins 2 & 3 closed
Power good signal detect from power supply	JP7	pins 1 & 2 closed

DRAM CONFIGURATION						
Size	Bank 0	P-0	Bank 1	P-1	Bank 2	Bank 3
512KB	(4) 44256	(2) 41256	NONE	NONE	NONE	NONE
512KB	NONE	NONE	NONE	NONE	(2) 256K x 9	NONE
640KB	(4) 44256	(2) 41256	(4) 4464	(2) 4164	NONE	NONE
1MB	(4) 44256	(2) 41256	(4) 44256	(2) 41256	NONE	NONE
1MB	NONE	NONE	NONE	NONE	(2) 256K x 9	(2) 256K x 9
2MB	NONE	NONE	NONE	NONE	(2) 1M x 9	NONE
4MB	NONE	NONE	NONE	NONE	(2) 1M x 9	(2) 1M x 9