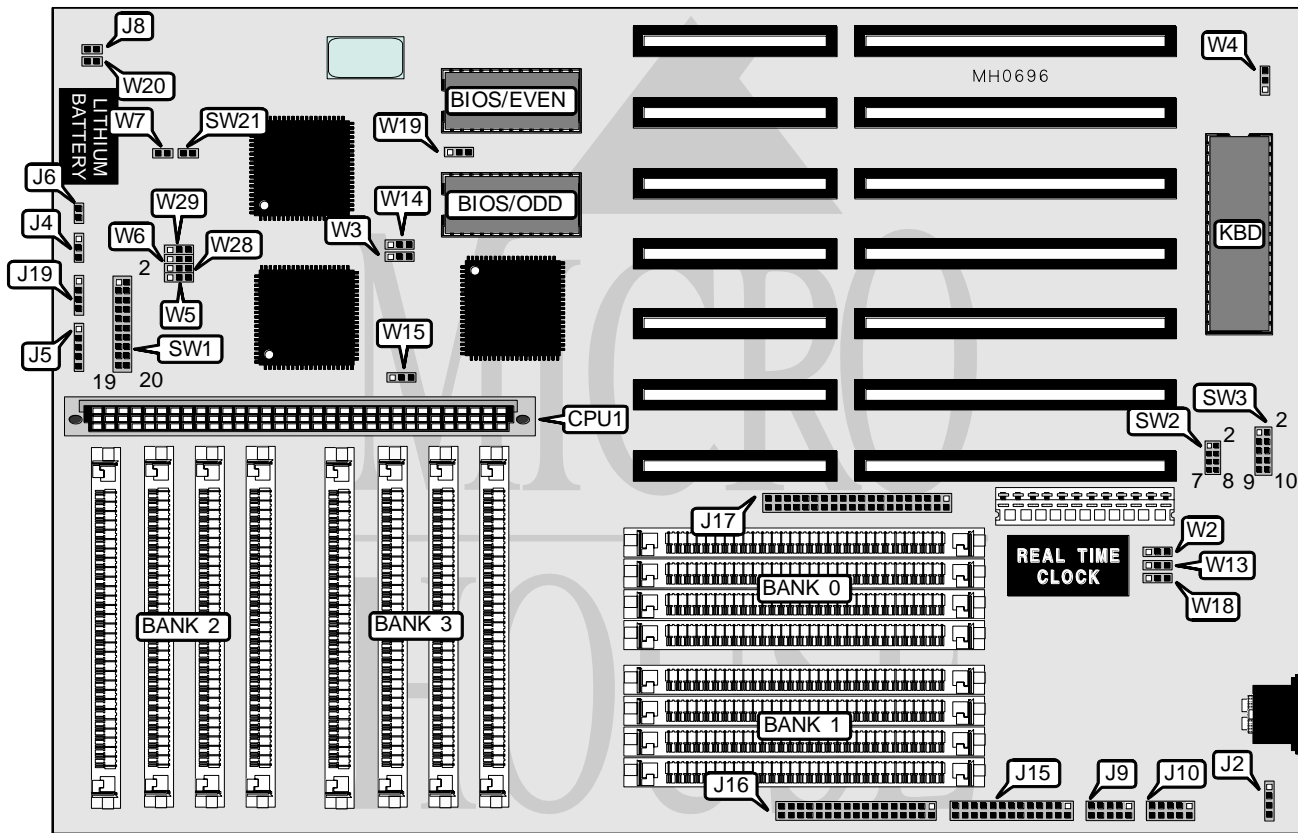


HYUNDAI ELECTRONICS, INC.

CORPORATE SERIES 386/486 (VER. E & LATER)

Processor	80386DX/80486SX/80486DX
Processor Speed	20/25/33/40/50MHz
Chip Set	Northport/VLSI
Max. Onboard DRAM	64MB
Cache	64/256KB (on CPU card)
BIOS	AMI
Dimensions	355.6mm x 304.8mm
I/O Options	Serial ports (2), parallel port, floppy drive interface, IDE interface, proprietary CPU card slot
NPU Options	80387/3167/4167



CONNECTIONS			
Purpose	Location	Purpose	Location
Proprietary CPU card	CPU1	Serial port 1	J9
External battery	J2	Serial port 2	J10
Turbo LED	J4	Parallel port	J15
Power LED & keylock	J5	Floppy drive interface	J16
Reset switch	J6	IDE interface	J17
IDE interface LED	J8	Speaker	J19

Note: Although the CPU card supports a 50MHz processor, only a 40MHz 386DX, a 20MHz 486SX, and a 33MHz 486DX version are sold by Hyundai.

Continued on next page . . .

HYUNDAI ELECTRONICS, INC.

CORPORATE SERIES 386/486 (VER. E & LATER)

... continued from previous page

USER CONFIGURABLE SETTINGS		
Function	Jumper/Switch	Position
í Factory configured - do not alter	SW1 pins 1 & 2	Open
í Factory configured - do not alter	SW1 pins 3 & 4	Closed
í Factory configured - do not alter	SW1 pins 5 & 6	Closed
í Video BIOS shadowing enabled	SW1 pins 7 & 8	Closed
Video BIOS shadowing disabled	SW1 pins 7 & 8	Open
í SCSI BIOS shadowing disabled	SW1 pins 9 & 10	Open
SCSI BIOS shadowing enabled	SW1 pins 9 & 10	Closed
í ROM BIOS shadowing enabled	SW1 pins 11 & 12	Closed
ROM BIOS shadowing disabled	SW1 pins 11 & 12	Open
í Serial port 2 interrupt select IRQ3	SW2 pins 1 & 2	Closed
Serial port 2 interrupt select none	SW2 pins 1 & 2	Open
í Serial port 1 interrupt select IRQ4	SW2 pins 3 & 4	Closed
Serial port 1 interrupt select none	SW2 pins 3 & 4	Open
í Floppy drive interface enabled	SW3 pins 1 & 2	Open
Floppy drive interface disabled	SW3 pins 1 & 2	Closed
í Serial port 2 select COM2/2F8h	SW3 pins 3 & 4	Open
Serial port 2 disabled	SW3 pins 3 & 4	Closed
í Serial port 1 select COM1/3F8h	SW3 pins 5 & 6	Open
Serial port 1 disabled	SW3 pins 5 & 6	Closed
í BIOS cache location select 486DX internal cache	SW4/3	On
BIOS cache location select external cache	SW4/3	Off
í BIOS (E000-EFFFh) shadowing enabled	SW4/4	On
BIOS (E000-EFFFh) shadowing disabled	SW4/4	Off
í DRAM transparent refresh enabled	SW4/5	On
DRAM transparent refresh disabled	SW4/5	Off
í Factory configured - do not alter	SW5/1	Off
í Factory configured - do not alter	SW5/2	On
í IDE interface interrupt select IRQ14	SW21	On
IDE interface interrupt select none	SW21	Off
í Floppy drive precompensation select standard	W2	pins 2 & 3 closed
Floppy drive precompensation select alternate	W2	pins 1 & 2 closed
í CPU speed select fast/switchable from keyboard	W3	pins 2 & 3 closed
CPU speed select fast	W3	Open
CPU speed select slow	W3	pins 1 & 2 closed
í Monitor type select color	W4	pins 2 & 3 closed
Monitor type select monochrome	W4	pins 1 & 2 closed
í CMOS memory normal operation	W7	Open
CMOS memory clear	W7	Closed
í Parallel port mode select bi-directional	W13	pins 2 & 3 closed
Parallel port mode select input only	W13	pins 1 & 2 closed
í Floppy drive type select single-speed	W18	pins 1 & 2 closed
Floppy drive type select dual-speed	W18	pins 2 & 3 closed

Continued on next page...

HYUNDAI ELECTRONICS, INC.

CORPORATE SERIES 386/486 (VER. E & LATER)

... continued from previous page

USER CONFIGURABLE SETTINGS (CON'T)		
Function	Jumper/Switch	Position
í BIOS type select 27256	W19	pins 2 & 3 closed
BIOS type select 27512	W19	pins 1 & 2 closed
í IDE interface enabled	W20	Open
IDE interface disabled	W20	Closed
Note: The locations of SW4 & SW5 are unididentified.		

DRAM CONFIGURATION				
Size	Bank 0	Bank 1	Bank 2	Bank 3
1MB	(4) 256K x 9	NONE	NONE	NONE
2MB	(4) 256K x 9	(4) 256K x 9	NONE	NONE
4MB	(4) 1M x 9	NONE	NONE	NONE
6MB	(4) 256K x 9	(4) 256K x 9	(4) 1M x 9	NONE
8MB	(4) 1M x 9	(4) 1M x 9	NONE	NONE
10MB	(4) 256K x 9	(4) 256K x 9	(4) 1M x 9	(4) 1M x 9
12MB	(4) 1M x 9	(4) 1M x 9	(4) 1M x 9	NONE
16MB	(4) 1M x 9	(4) 1M x 9	(4) 1M x 9	(4) 1M x 9
16MB	(4) 4M x 9	NONE	NONE	NONE
24MB	(4) 1M x 9	(4) 1M x 9	(4) 4M x 9	NONE
32MB	(4) 4M x 9	(4) 4M x 9	NONE	NONE
36MB	(4) 1M x 9	(4) 4M x 9	(4) 4M x 9	NONE
40MB	(4) 1M x 9	(4) 1M x 9	(4) 4M x 9	(4) 4M x 9
48MB	(4) 4M x 9	(4) 4M x 9	(4) 4M x 9	NONE
64MB	(4) 4M x 9	(4) 4M x 9	(4) 4M x 9	(4) 4M x 9

DRAM JUMPER CONFIGURATION					
Size	SW1	W5	W6	W28	W29
1MB	13 & 14, 15 & 16, 17 & 18, 19 & 20	2 & 3	2 & 3	Open	Open
2MB	13 & 14, 17 & 18, 19 & 20	2 & 3	2 & 3	Open	Open
4MB	13 & 14, 15 & 16, 17 & 18	1 & 2	2 & 3	Open	Open
6MB	15 & 16, 17 & 18, 19 & 20	2 & 3	2 & 3	1 & 2	2 & 3
8MB	13 & 14, 17 & 18	1 & 2	2 & 3	Open	Open
10MB	17 & 18, 19 & 20	2 & 3	2 & 3	1 & 2	2 & 3
12MB	15 & 16, 17 & 18	1 & 2	2 & 3	1 & 2	2 & 3
16MB	17 & 18	1 & 2	2 & 3	1 & 2	2 & 3
16MB	13 & 14, 15 & 16	1 & 2	2 & 3	Open	Open
24MB	15 & 16, 19 & 20	1 & 2	2 & 3	1 & 2	1 & 2
32MB	13 & 14	1 & 2	1 & 2	Open	Open
36MB	15 & 16	1 & 2	1 & 2	1 & 2	2 & 3
40MB	19 & 20	1 & 2	2 & 3	1 & 2	1 & 2
48MB	15 & 16	1 & 2	1 & 2	1 & 2	1 & 2
64MB	Open	1 & 2	1 & 2	1 & 2	1 & 2
Note: Pins designated should be in the closed position.					

Continued on next page . . .

HYUNDAI ELECTRONICS, INC. CORPORATE SERIES 386/486 (VER. E & LATER)

... continued from previous page

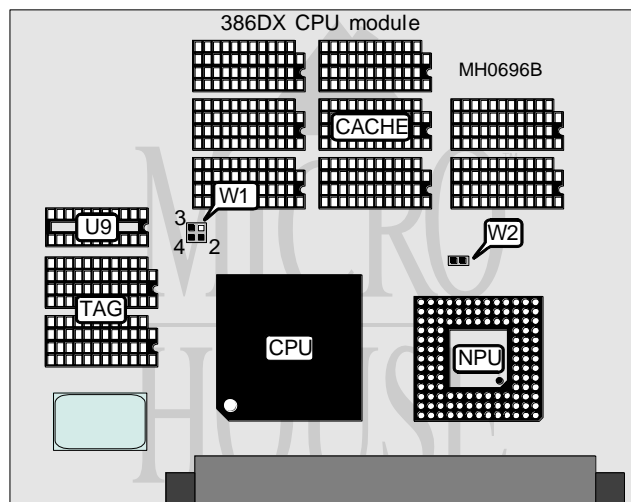
PARALLEL PORT IRQ CONFIGURATION	
IRQ	SW2
IRQ7	pins 7 & 8 closed
IRQ5	pins 5 & 6 closed

PARALLEL PORT CONFIGURATION	
IRQ	SW3
LPT1/378h	Open
LPT1/3BCh	pins 9 & 10 closed
LPT2/278h	pins 7 & 8 closed
Disabled	pins 7 & 8, 9 & 10 closed

NONCACHEABLE CONFIGURATION		
Setting	SW4/1	SW4/2
None	Off	Off
256KB (3D80-3E80)	Off	Closed
512KB (3C80-3E80)	Closed	Off
1024KB (3A80-3E80)	Off	Off

Note: The location of SW4 is unidentified.

BUS SPEED CONFIGURATION		
Setting	W14	W15
CPU speed/2	pins 2 & 3 closed	Closed
CPU speed/4	pins 1 & 2 closed	Open



USER CONFIGURABLE SETTINGS		
Function	Jumper	Position
í Factory configured - do not alter	W2	closed

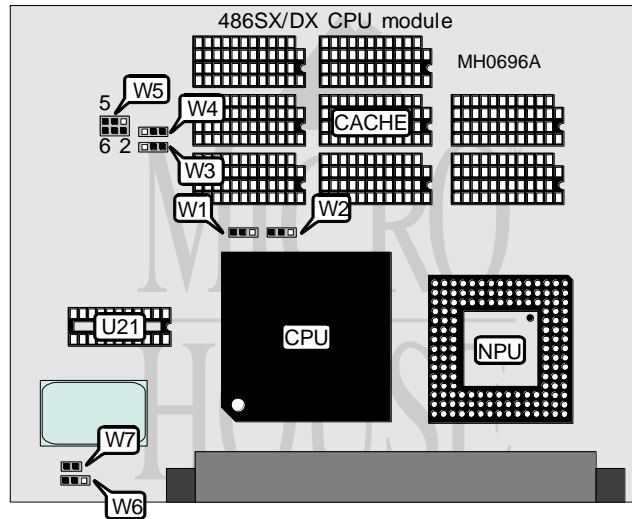
Continued on next page . . .

HYUNDAI ELECTRONICS, INC. CORPORATE SERIES 386/486 (VER. E & LATER)

... continued from previous page

SRAM CONFIGURATION						
Size	Cache	TAG	U9	SW5/switch 3	SW5/switch 4	W1
64KB	(8) 16K x 4	(2) 16K x 4	(1) 16K x 4	open	open	pins 1&2 and 3&4
256KB	(8) 64K x 4	(2) 64K x 4	(1) 16K x 4	closed	closed	open

Note: The location of SW5 on the mainboard is unknown.
Pins designated should be in the closed position.



USER CONFIGURABLE SETTINGS		
Function	Jumper	Position
CPU type select 80486SX	W6	pins 1 & 2 closed
CPU type select 80486DX	W6	pins 2 & 3 closed
í Factory configured - do not alter	W7	Closed

CACHE CONFIGURATION		
Size	Bank 0	U21
64KB	(8) 16K x 4	(1) 16K x 4
256KB	(8) 64K x 4	NONE

CACHE JUMPER CONFIGURATION					
Size	SW5/3	SW5/4	W1	W2	W5
64KB	Off	Off	2 & 3	2 & 3	Open
256KB	On	On	1 & 2	1 & 2	3 & 4, 5 & 6

Note: The location of SW5 on the mainboard is unidentified. Pins designated should be in the closed position.

BURST MODE CONFIGURATION			
Setting	W3	W4	W5
Enabled	pins 2 & 3 closed	pins 2 & 3 closed	pins 1 & 2 closed
Disabled	pins 1 & 2 closed	pins 1 & 2 closed	Open