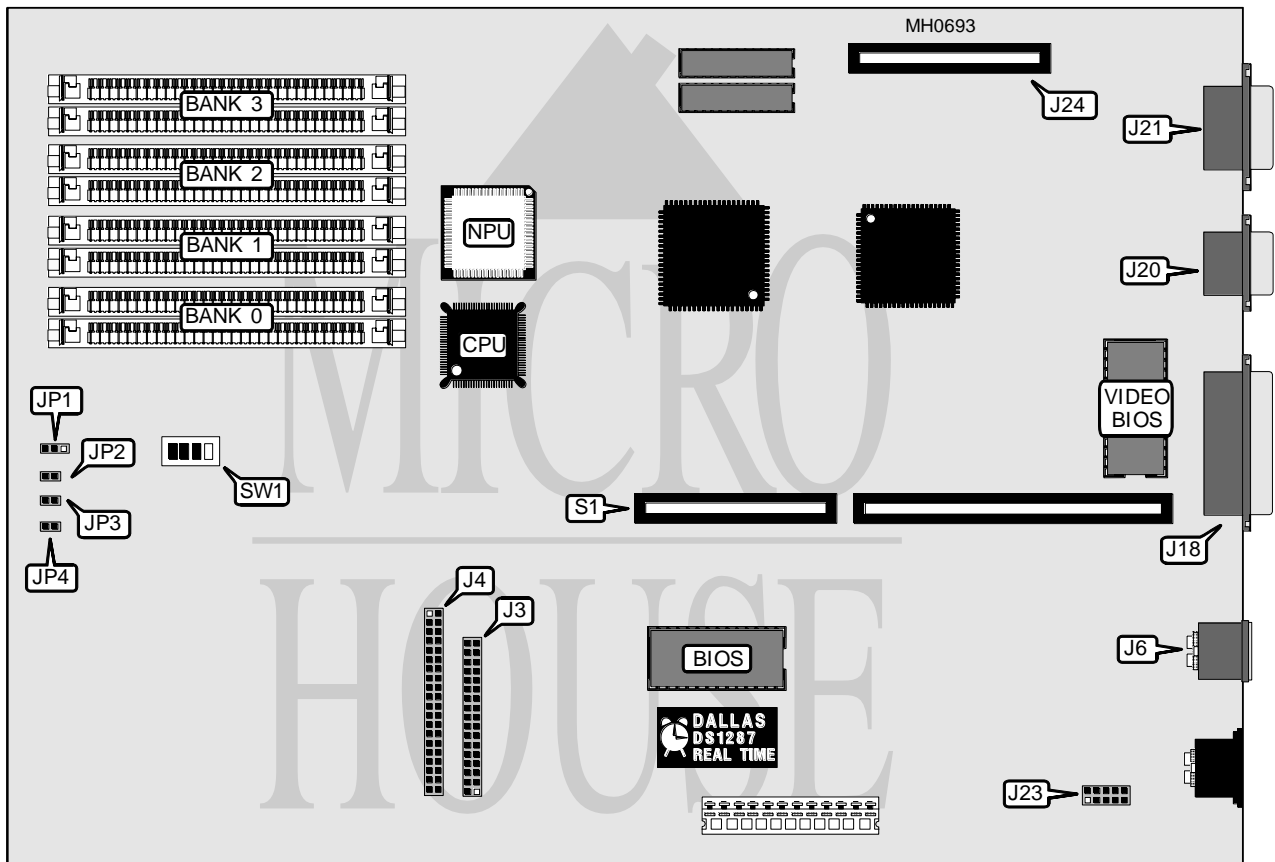


# HYUNDAI ELECTRONICS, INC.

## SUPER 386S/20L

<b>Processor</b>	80386SX
<b>Processor Speed</b>	20MHz
<b>Chip Set</b>	Headland
<b>Max. Onboard DRAM</b>	8MB
<b>Cache</b>	None
<b>BIOS</b>	Award
<b>Dimensions</b>	330mm x 218mm
<b>I/O Options</b>	Bus mouse port, floppy drive interface, IDE interface, serial port, parallel port, video port (TTL), VGA port, video feature port (8514)
<b>NPU Options</b>	80387SX



CONNECTIONS			
Purpose	Location	Purpose	Location
Floppy drive interface	J3	Video feature port (8514)	J24
IDE interface	J4	Turbo LED	JP1
Bus mouse port	J6	IDE interface LED	JP2
Parallel port	J18	Speaker	JP3
Serial port	J20	Reset switch	JP4
VGA port	J21	Riser card	S1
Video port (TTL)	J23		

Continued on next page . . .

# HYUNDAI ELECTRONICS, INC.

## SUPER 386S/20L

... continued from previous page

USER CONFIGURABLE SETTINGS		
Function	Switch	Position
í Monitor type select color	SW1/1	On
Monitor type select monochrome	SW1/1	Off
í Video feature port (8514) disabled	SW1/4	On
Video feature port (8514) enabled	SW1/4	Off

DRAM CONFIGURATION				
Size	Bank 0	Bank 1	Bank 2	Bank 3
2MB	(2) 1M x 9	NONE	NONE	NONE
3MB	(2) 1M x 9	(2) 256K x 9	(2) 256K x 9	NONE
4MB	(2) 1M x 9	(2) 1M x 9	NONE	NONE
5MB	(2) 1M x 9	(2) 1M x 9	(2) 256K x 9	(2) 256K x 9
6MB	(2) 1M x 9	(2) 1M x 9	(2) 1M x 9	NONE
8MB	(2) 1M x 9	(2) 1M x 9	(2) 1M x 9	(2) 1M x 9

VIDEO CONFIGURATION		
Setting	SW1/2	SW1/3
On board video enabled	On	Off
On board video disabled	Off	On