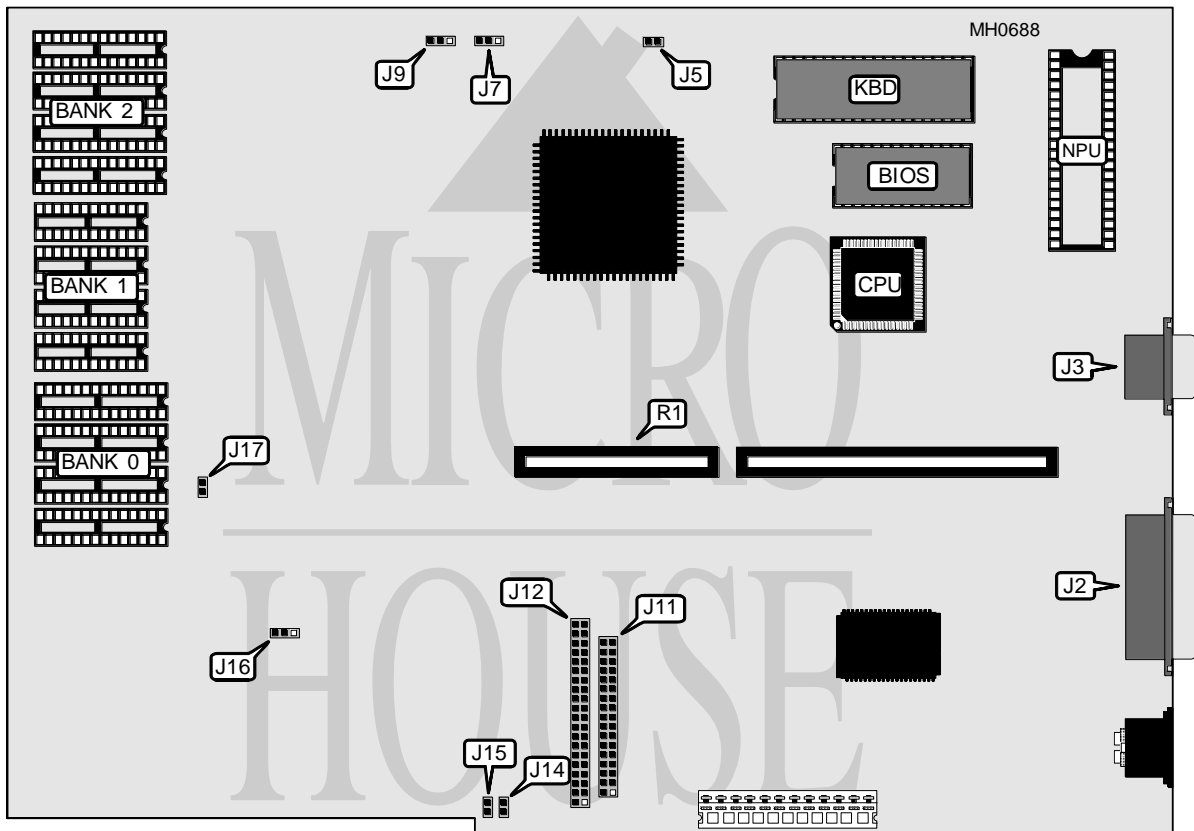


HYUNDAI ELECTRONICS, INC.

SUPER-286T

Processor	80286
Processor Speed	12MHz
Chip Set	VLSI
Max. Onboard DRAM	1MB
Cache	None
BIOS	Award
Dimensions	355mm x 304mm
I/O Options	Parallel port, serial port, floppy drive interface, IDE interface
NPU Options	80287



CONNECTIONS			
Purpose	Location	Purpose	Location
Parallel port	J2	Power LED	J15
Serial port	J3	External battery	J16
Floppy drive interface	J11	Speaker	J17
IDE interface	J12	Riser card	R1
IDE interface LED	J14		

Continued on next page . . .

HYUNDAI ELECTRONICS, INC.
SUPER - 286T

... continued from previous page

USER CONFIGURABLE SETTINGS		
Function	Jumper	Position
í Monitor type select color	J5	Closed
Monitor type select monochrome	J5	Open
í Parallel port select LPT1/IRQ7	J7	pins 1 & 2 closed
Parallel port select LPT2/IRQ5	J7	pins 2 & 3 closed
Parallel port disabled	J7	Open
í Serial port select COM1/IRQ4	J9	pins 1 & 2 closed
Serial port select COM2/IRQ3	J9	pins 2 & 3 closed
Serial port select disabled	J9	Open

DRAM CONFIGURATION			
Size	Bank 0	Bank 1	Bank 2
640KB	(4) 44256	(4) 4464	NONE
1MB	(4) 44256	NONE	(4) 44256
Note: Bank 0 is factory installed and is not configurable. The location of parity chips are unidentified.			