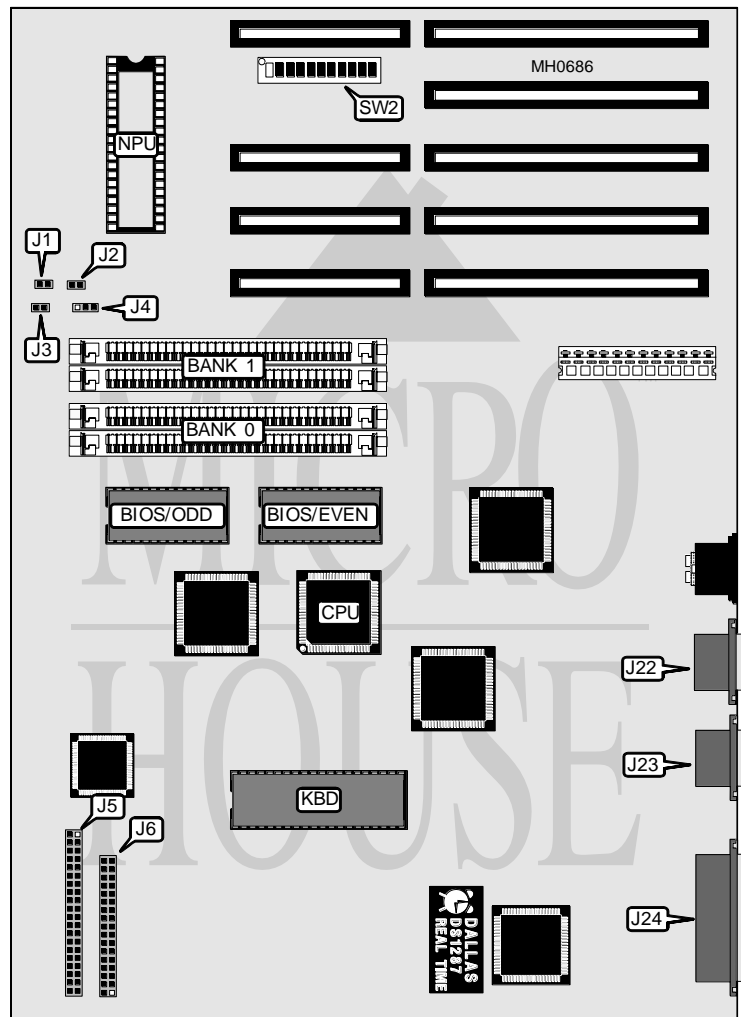


HYUNDAI ELECTRONICS, INC.

SUPER 286E PLUS

Processor	80286
Processor Speed	12MHz
Chip Set	Headland
Max. Onboard DRAM	4MB
Cache	None
BIOS	Award
Dimensions	350mm x 304mm
I/O Options	Floppy drive interface, IDE interfaces (2), parallel port, serial ports (2)
NPU Options	80287



CONNECTIONS			
Purpose	Location	Purpose	Location
Reset switch	J1	Floppy drive interface	J6
IDE interface LED	J2	Serial port 1	J22
Speaker	J3	Serial port 2	J23
Turbo LED	J4	Parallel port	J24
IDE interface	J5		

Continued on next page . . .

HYUNDAI ELECTRONICS, INC.

SUPER 286E PLUS

... continued from previous page

USER CONFIGURABLE SETTINGS		
Function	Switch	Position
í Bus speed select 8MHz	SW2/1	On
Bus speed select 12MHz	SW2/1	Off
í Monitor type select color	SW2/2	On
Monitor type select monochrome	SW2/2	Off
í Parallel port enabled	SW2/6	On
Parallel port disabled	SW2/6	Off
í Serial port 1 select COM2	SW2/7	On
Serial port 1 disabled	SW2/7	Off
í Serial port 2 select COM1	SW2/8	On
Serial port 2 disabled	SW2/8	Off
í Floppy drive interface enabled	SW2/10	On
Floppy drive interface disabled	SW2/10	Off
í Factory configured - do not alter	SW2/11	N/A
í Factory configured - do not alter	SW2/12	N/A

DRAM CONFIGURATION		
Size	Bank 0	Bank 1
1MB	(2) 256K x 9	(2) 256K x 9
2MB	(2) 1M x 9	NONE
4MB	(2) 1M x 9	(2) 1M x 9

PARALLEL PORT CONFIGURATION			
Setting	SW2/3	SW2/4	SW2/5
LPT1	On	Off	Off
LPT2	Off	On	On