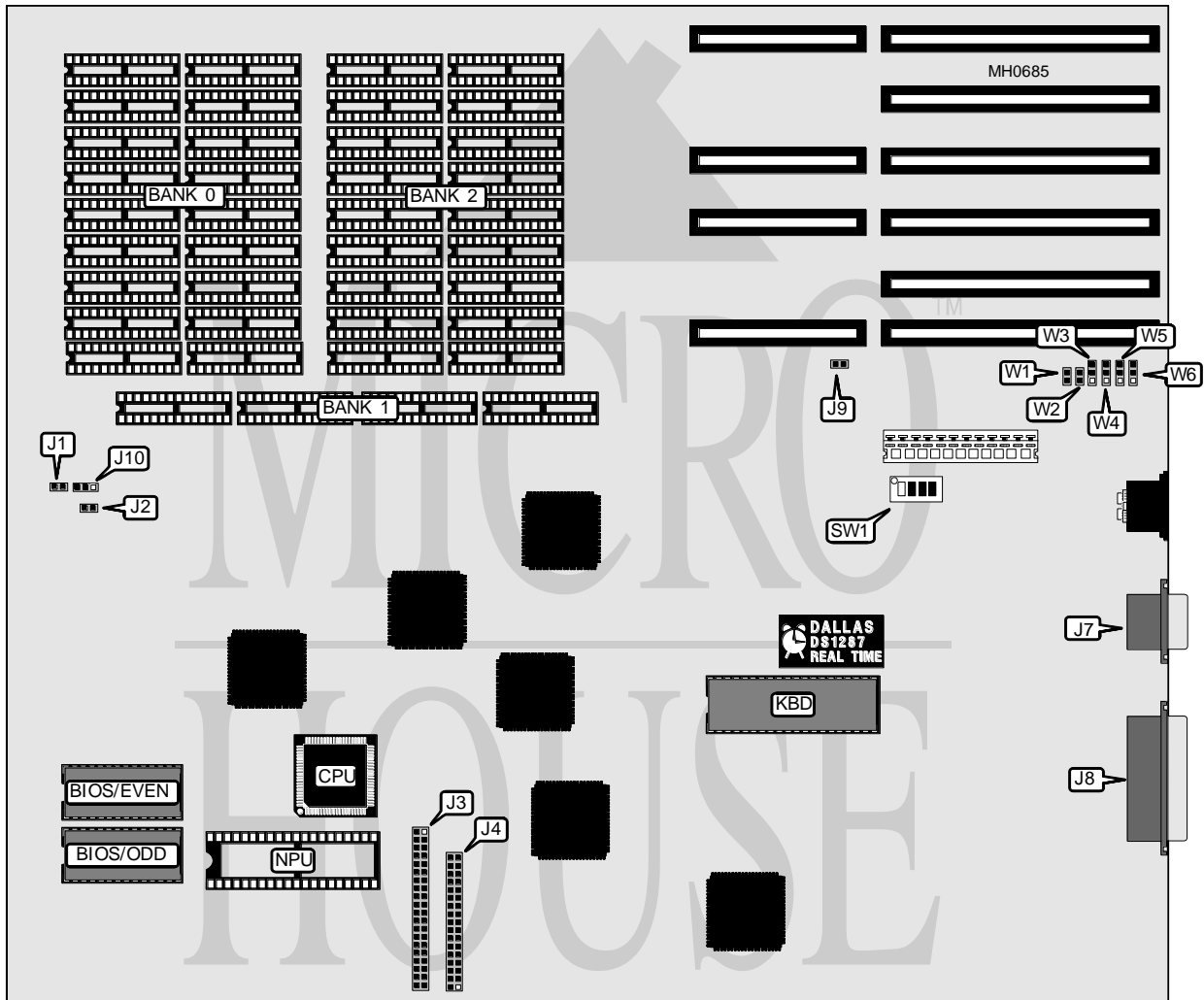


HYUNDAI ELECTRONICS, INC.

SUPER 286E

Processor	80286
Processor Speed	12MHz
Chip Set	VLSI
Max. Onboard DRAM	1MB
Cache	None
BIOS	Award
Dimensions	350mm x 304mm
I/O Options	Serial port, parallel port; floppy drive interface, IDE interface
NPU Options	80287



CONNECTIONS			
Purpose	Location	Purpose	Location
Speaker	J1	Serial port	J7
Reset switch	J2	Parallel port	J8
IDE interface	J3	IDE interface LED	J9
Floppy drive interface	J4	Turbo LED	J10

Continued on next page . . .

HYUNDAI ELECTRONICS, INC.

SUPER 286E

... continued from previous page

USER CONFIGURABLE SETTINGS		
Function	Jumper/Switch	Position
í Monitor type select color	SW1/4	On
Monitor type select monochrome	SW1/4	Off
í IDE interface enabled	W1	Closed
IDE interface disabled	W1	Open
í Floppy drive interface enabled	W2	Closed
Floppy drive interface disabled	W2	Open
í Serial port 1 select COM1	W3 & W6	pins 1 & 2 closed
Serial port 1 select COM2	W3 & W6	pins 2 & 3 closed
Serial port1 disabled	W3 & W6	Open
í Parallel port select LPT1	W4 & W5	pins 1 & 2 closed
Parallel port select LPT2	W4 & W5	pins 2 & 3 closed
Parallel port disabled	W4 & W5	Open

DRAM CONFIGURATION			
Size	Bank 0	Bank 1	Bank 2
512KB	(18) 41256	NONE	NONE
640KB	(18) 41256	(4) 4464	NONE
1MB	(18) 41256	NONE	(18) 41256

DRAM SWITCH CONFIGURATION			
Size	SW1/1	SW1/2	SW1/3
512KB	On	On	On
640KB	Off	On	On
1MB	Off	Off	On