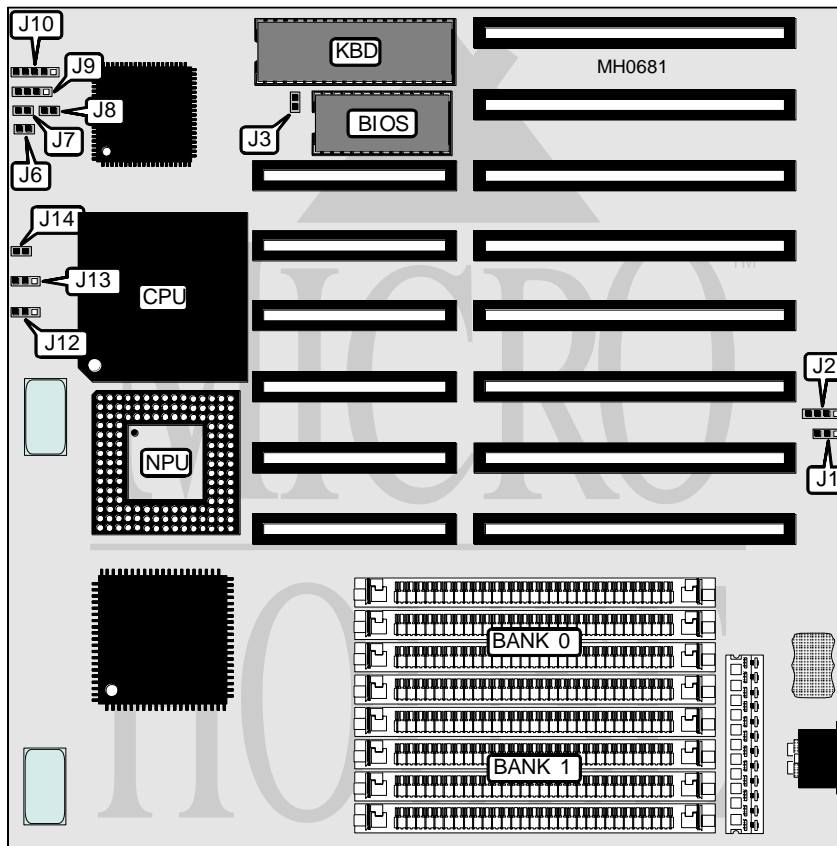


# AMERICAN DIGICOM CORPORATION

## DIGIS - 486 P

<b>Processor</b>	80486SX/80486DX
<b>Processor Speed</b>	20/25/33MHz
<b>Chip Set</b>	OPTI
<b>Max. Onboard DRAM</b>	32MB
<b>Cache</b>	None
<b>BIOS</b>	AMI
<b>Dimensions</b>	220mm x 220mm
<b>I/O Options</b>	None
<b>NPU Options</b>	4167



CONNECTIONS			
Purpose	Location	Purpose	Location
External battery	J2	Turbo switch	J8
Reset switch	J6	Speaker	J9
Turbo LED	J7	Power LED & keylock	J10

Continued on next page . . .

# AMERICAN DIGICOM CORPORATION

## DIGIS - 486 P

... continued from previous page

USER CONFIGURABLE SETTINGS		
Function	Jumper	Position
í CMOS memory normal operation	J1	pins 2 & 3 closed
CMOS memory clear	J1	pins 1 & 2 closed
í Monitor type select color	J3	Closed
Monitor type select monochrome	J3	Open

DRAM CONFIGURATION		
Size	Bank 0	Bank 1
1MB	(4) 256K x 9	NONE
2MB	(4) 256K x 9	(4) 256K x 9
4MB	(4) 1M x 9	NONE
5MB	(4) 256K x 9	(4) 1 M x 9
8MB	(4) 1M x 9	(4) 1M x 9
16MB	(4) 4M x 9	NONE
32MB	(4) 4M x 9	(4) 4M x 9

CPU TYPE CONFIGURATION			
Type	J12	J13	J14
80486SX	Open	pins 2 & 3 closed	Open
80486DX	pins 1 & 2 closed	pins 1 & 2 closed	Closed