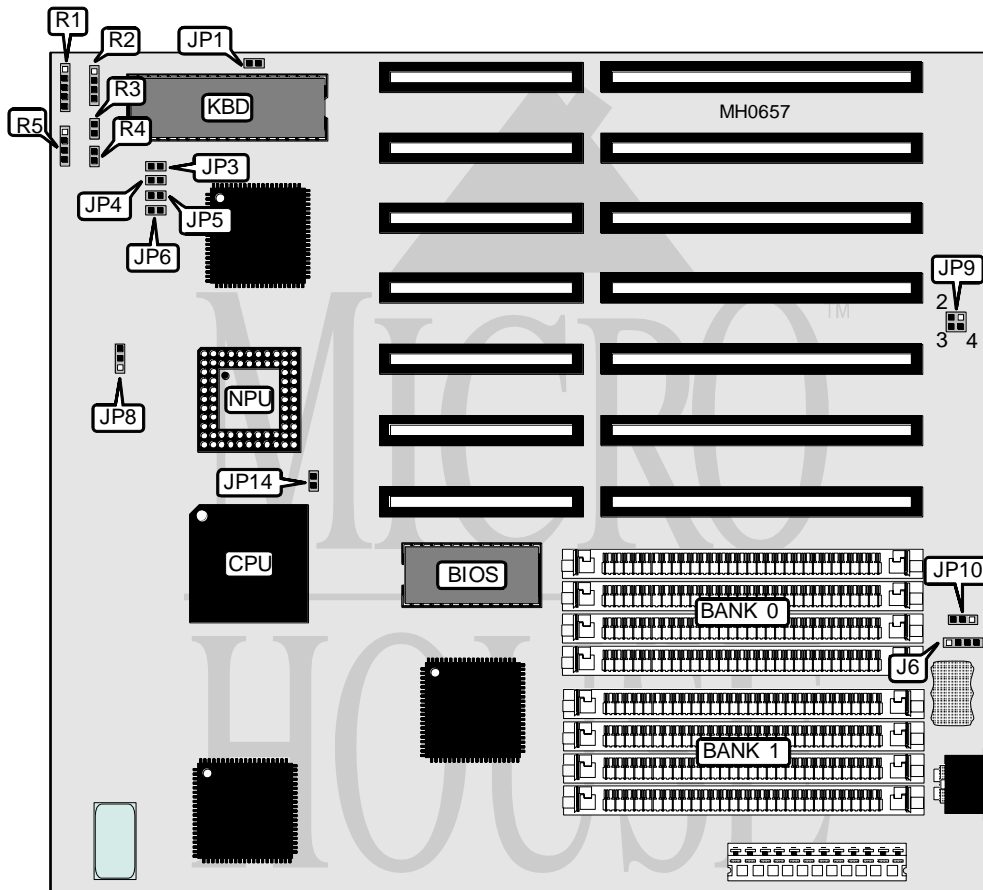


BIOSTAR MICROTECH INTERNATIONAL CORPORATION

MB-1325VT/1333VT (VER. 2)

| | |
|--------------------------|---------------|
| Processor | 80386DX |
| Processor Speed | 16MHz |
| Chip Set | VLSI |
| Max. Onboard DRAM | 32MB |
| Cache | None |
| BIOS | AMI |
| Dimensions | 250mm x 220mm |
| I/O Options | None |
| NPU Options | 80387 |



| CONNECTIONS | | | |
|---------------------|----------|--------------|----------|
| Purpose | Location | Purpose | Location |
| External battery | J6 | Reset switch | R3 |
| Power LED & keylock | R1 | Turbo switch | R4 |
| Turbo LED | R2 | Speaker | R5 |

Continued on next page . . .

BIOSTAR MICROTECH INTERNATIONAL CORPORATION
MB-1325VT/1333VT (VER. 2)

... continued from previous page

| USER CONFIGURABLE SETTINGS | | |
|--------------------------------|--------|-------------------|
| Function | Jumper | Position |
| í Monitor type select color | JP1 | Closed |
| Monitor type select monochrome | JP1 | Open |
| í NPU type select 80387 | JP8 | pins 1 & 2 closed |
| NPU type select other | JP8 | pins 2 & 3 closed |
| í CMOS memory normal operation | JP9 | pins 1 & 2 closed |
| CMOS memory clear | JP9 | pins 3 & 4 closed |
| í Battery type select internal | JP10 | pins 1 & 2 closed |
| Battery type select external | JP10 | pins 2 & 3 closed |
| í Pipeline mode disabled | JP14 | Open |
| Pipeline mode enabled | JP14 | Closed |

| DRAM CONFIGURATION | | |
|--------------------|--------------|--------------|
| Size | Bank 0 | Bank 1 |
| 1MB | (4) 256K x 9 | NONE |
| 2MB | (4) 256K x 9 | (4) 256K x 9 |
| 4MB | (4) 1M x 9 | NONE |
| 5MB | (4) 256K x 9 | (4) 1M x 9 |
| 8MB | (4) 1M x 9 | (4) 1M x 9 |
| 16MB | (4) 4M x 9 | NONE |
| 17MB | (4) 256K x 9 | (4) 4M x 9 |
| 20MB | (4) 1M x 9 | (4) 4M x 9 |
| 32MB | (4) 4M x 9 | (4) 4M x 9 |

| KEYBOARD CONFIGURATION | | | | |
|--------------------------|--------|--------|--------|--------|
| Size | JP3 | JP4 | JP5 | JP6 |
| controller select pin 23 | Closed | Open | Open | Open |
| controller select pin 24 | Open | Closed | Open | Open |
| controller select pin 27 | Open | Open | Closed | Open |
| controller select pin 32 | Open | Open | Open | Closed |