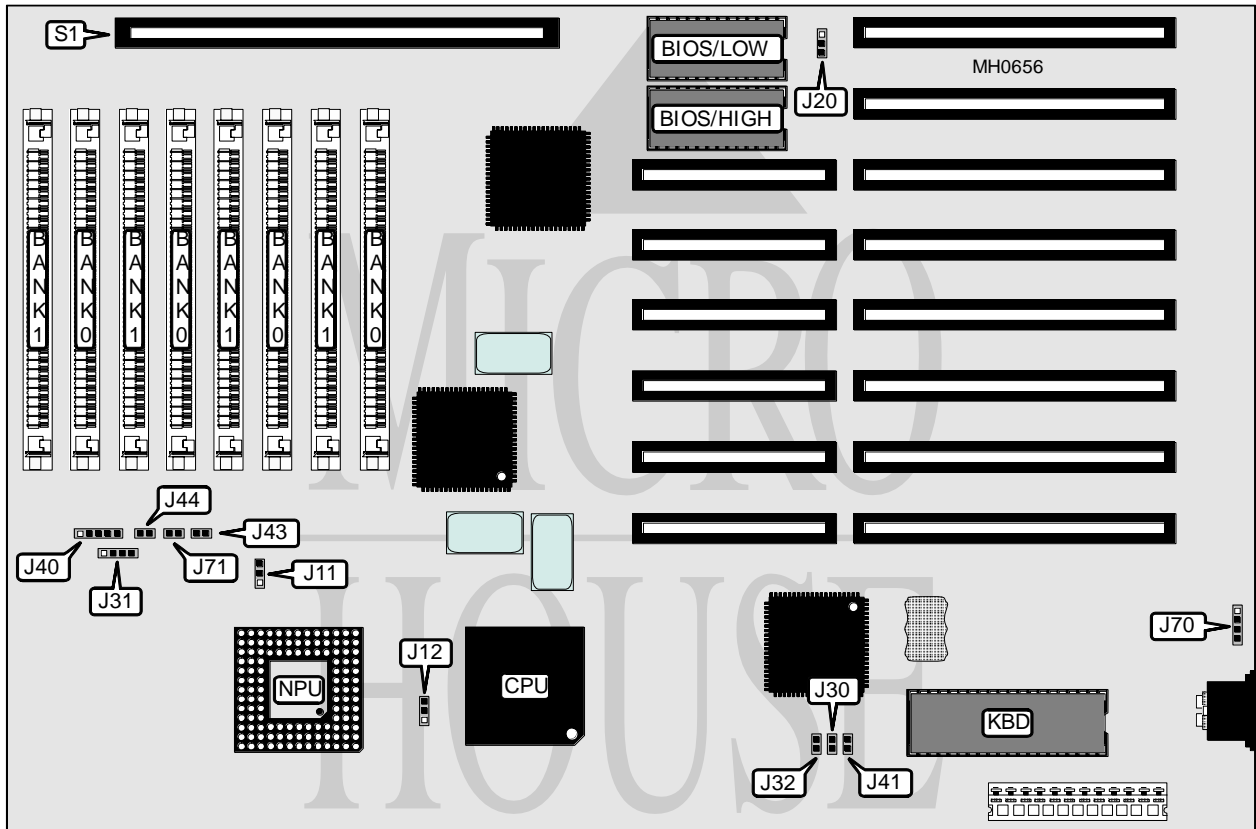


BIOSTAR MICROTECH INTERNATIONAL CORPORATION

MB-1325V/1333V

Processor 80386DX
Processor Speed 25/33MHz
Chip Set VLSI
Max. Onboard DRAM 8MB
Cache None
BIOS AMI
Dimensions 330mm x 218mm
I/O Options 32-bit external memory card slot
NPU Options 80387/3167



CONNECTIONS			
Purpose	Location	Purpose	Location
Speaker	J31	External battery	J70
Power LED & keylock	J40	Reset switch	J71
Turbo switch	J43	32-bit external memory card	S1
Turbo LED	J44		

Continued on next page . . .

BIOSTAR MICROTECH INTERNATIONAL CORPORATION

MB - 1325V / 1333V

... continued from previous page

USER CONFIGURABLE SETTINGS		
Function	Jumper	Position
í NPU disabled	J11	pins 2 & 3 closed
NPU enabled	J11	pins 1 & 2 closed
í Pipeline mode disabled	J12	pins 1 & 2 closed
Pipeline mode enabled	J12	pins 2 & 3 closed
í BIOS type select 27256	J20	pins 2 & 3 closed
BIOS type select 27128	J20	pins 1 & 2 closed
í Factory configured - do not alter	J30	Closed
í Factory configured - do not alter	J32	Open
í Monitor type select color	J41	Closed
Monitor type select monochrome	J41	Open

DRAM CONFIGURATION		
Size	Bank 0	Bank 1
1MB	(4) 256K x 9	NONE
2MB	(4) 256K x 9	(4) 256K x 9
4MB	(4) 1M x 9	NONE
5MB	(4) 256K x 9	(4) 1M x 9
8MB	(4) 1M x 9	(4) 1M x 9
16MB	(4) 4M x 9	NONE
17MB	(4) 256K x 9	(4) 4M x 9
20MB	(4) 1M x 9	(4) 4M x 9
32MB	(4) 4M x 9	(4) 4M x 9