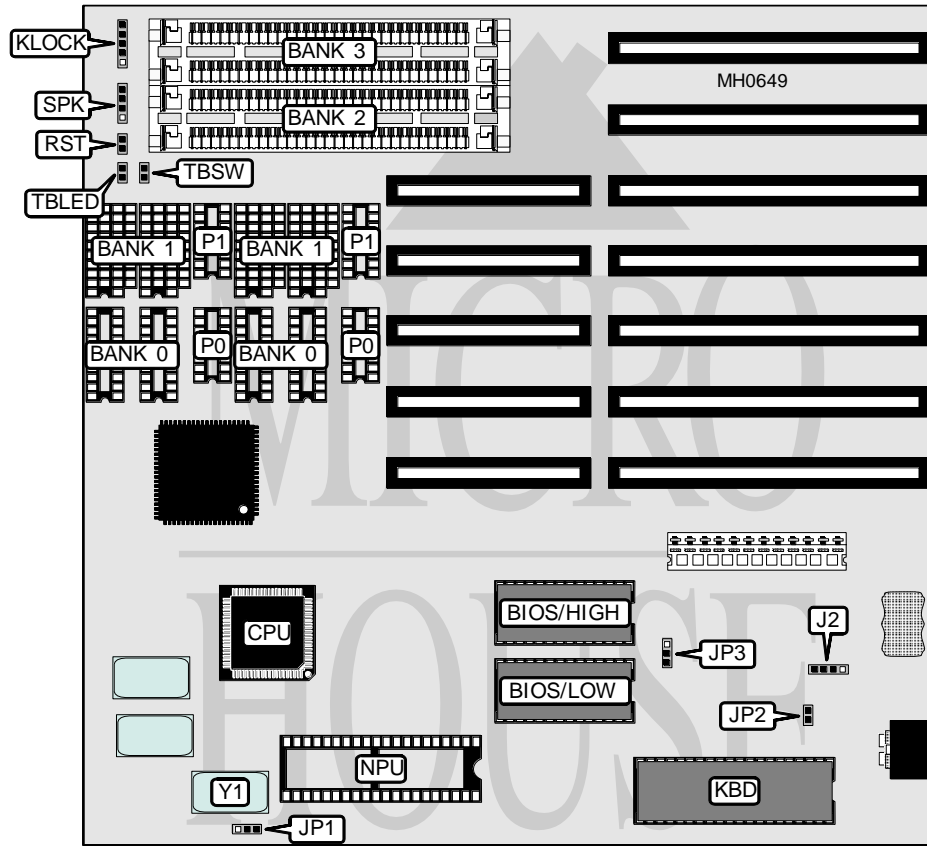


BIOSTAR MICROTECH INTERNATIONAL CORPORATION

M B - 1 2 1 6 H

Processor 80286
Processor Speed 16MHz
Chip Set C & T
Max. Onboard DRAM 4MB
SRAM Cache None
BIOS AMI
Dimensions 220mm x 220mm
I/O Options None
NPU Options 80287



CONNECTIONS			
Purpose	Location	Purpose	Location
External battery	J2	Speaker	SPK
Power LED & keylock	KLOCK	Turbo LED	TBLED
Reset switch	RST	Turbo switch	TBSW

Continued on next page . . .

BIOSTAR MICROTECH INTERNATIONAL CORPORATION**MB - 1216H**

... continued from previous page

USER CONFIGURABLE SETTINGS

Function	Jumper	Position
í NPU mode select synchronous with CPU	JP1	pins 1 & 2 closed
NPU mode select synchronous with oscillator installed at Y1	JP1	pins 2 & 3 closed
í Monitor type select monochrome	JP2	Open
Monitor type select color	JP2	Closed
í BIOS type select 27256	JP3	pins 1& 2 closed
BIOS type select 27128	JP3	pins 2 & 3 closed

DRAM CONFIGURATION

Size	Bank 0	P-0	Bank 1	P-1	Bank 2	Bank 3
512KB	(4) 44256	(2) 41256	NONE	NONE	NONE	NONE
512KB	NONE	NONE	NONE	NONE	(2) 256K x 9	NONE
640KB	(4) 44256	(2) 41256	(4) 4464	(2) 4164	NONE	NONE
1MB	(4) 44256	(2) 41256	(4) 44256	(2) 41256	NONE	NONE
1MB	NONE	NONE	NONE	NONE	(2) 256K x 9	(2) 256K x 9
2MB	NONE	NONE	NONE	NONE	(2) 1M x 9	NONE
4MB	NONE	NONE	NONE	NONE	(2) 1M x 9	(2) 1M x 9