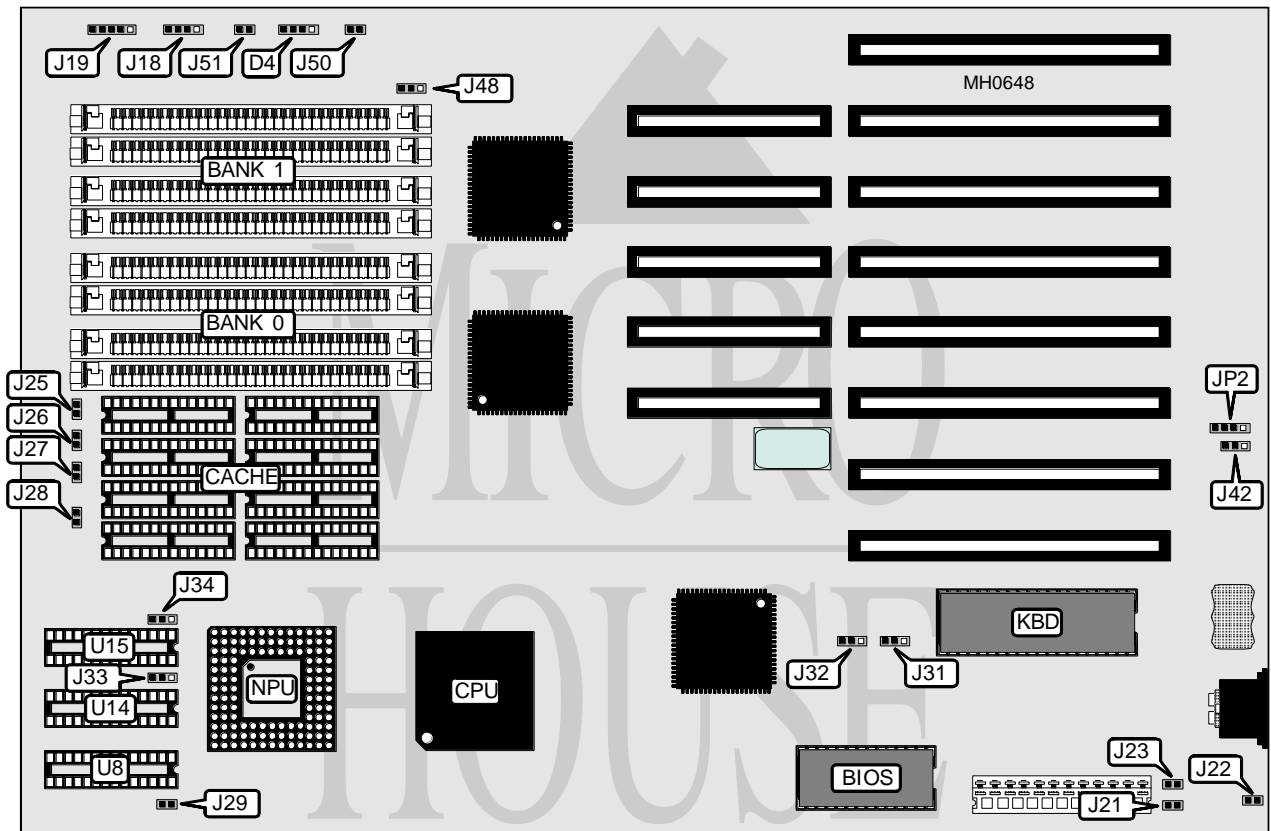


BIOSTAR MICROTECH INTERNATIONAL CORPORATION

MB-1333C-CH/1340C-CH

Processor 80386DX
Processor Speed 33/40MHz
Chip Set C & T
Max. Onboard DRAM 32MB
Cache 256KB
BIOS C & T
Dimensions 330mm x 218mm
I/O Options None
NPU Options 80387/3167



CONNECTIONS			
Purpose	Location	Purpose	Location
Turbo LED	D4	Turbo switch	J50
Speaker	J18	Reset switch	J51
Power LED & keylock	J19	External battery	JP2

Continued on next page . . .

BIOSTAR MICROTECH INTERNATIONAL CORPORATION

MB-1333C-CH/1340C-CH

... continued from previous page

USER CONFIGURABLE SETTINGS

Function	Jumper	Position
í Factory configured - do not alter	J21	Open
í A20 gate enabled	J22	Closed
A20 gate disabled	J22	Open
í Monitor type select color	J23	Closed
Monitor type select monochrome	J23	Open
í CMOS memory normal operation	J42	pins 2 & 3 closed
CMOS memory clear	J42	pins 1 & 2 closed

DRAM CONFIGURATION

Size	Bank 0	Bank 1	J48
1MB	(4) 256K x 9	NONE	pins 2 & 3 closed
2MB	(4) 256K x 9	(4) 256K x 9	pins 2 & 3 closed
4MB	(4) 1M x 9	NONE	pins 2 & 3 closed
5MB	(4) 256K x 9	(4) 1 M x 9	pins 1 & 2 closed
8MB	(4) 1M x 9	(4) 1M x 9	pins 2 & 3 closed
16MB	(4) 4M x 9	NONE	pins 2 & 3 closed
17MB	(4) 4M x 9	(4) 256K x 9	pins 1 & 2 closed
20MB	(4) 4M x 9	(4) 1M x 9	pins 1 & 2 closed
32MB	(4) 4M x 9	(4) 4M x 9	pins 2 & 3 closed

CACHE CONFIGURATION

Size	Bank 0	TAG (U8)	TAG (U14 & U15)
64KB	(8) 16K x 4	NONE	(2) 16K x 4
256KB	(8) 64K x 4	(1) 64K x 4	(2) 64K x 4

CACHE JUMPER CONFIGURATION

Size	J25	J26	J27	J28	J29	J33	J34
64KB	Closed	Closed	Closed	Closed	Closed	1 & 2	1 & 2
256KB	Open	Open	Open	Open	Open	2 & 3	2 & 3

Note: Pins designated should be in the closed position.

POWER GOOD CONFIGURATION

Setting	J31	J32
Signal detect from power supply	pins 2 & 3 closed	pins 2 & 3 closed
Signal detect from board	pins 1 & 2 closed	pins 1 & 2 closed