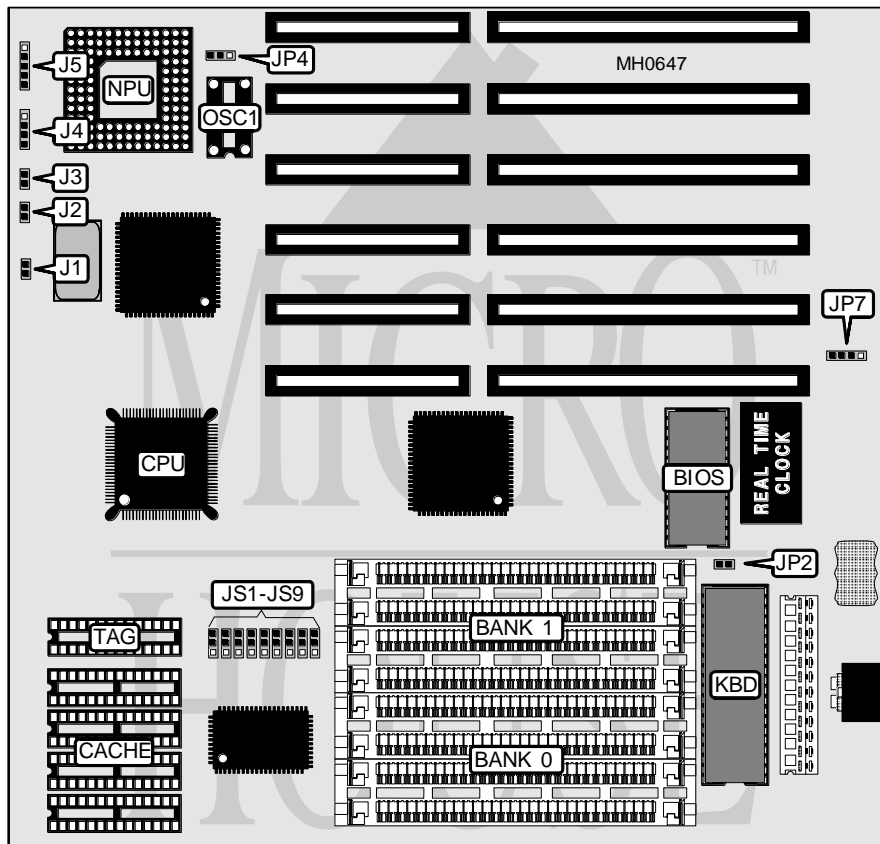


# FIRST INTERNATIONAL COMPUTER, INC.

## LEO 386-25/33/40SC-HQ (386-SC-HQ)

<b>Processor</b>	80386DX
<b>Processor Speed</b>	25/33/40MHz
<b>Chip Set</b>	Symphony
<b>Max. Onboard DRAM</b>	32MB
<b>Cache</b>	32/128KB
<b>BIOS</b>	AMI
<b>Dimensions</b>	330mm x 218mm
<b>I/O Options</b>	None
<b>NPU Options</b>	80387/3167



CONNECTIONS			
Purpose	Location	Purpose	Location
Turbo LED	J1	Speaker	J4
Turbo switch	J2	Power LED & keylock	J5
Reset switch	J3	External battery	JP7

Continued on next page . . .

**FIRST INTERNATIONAL COMPUTER, INC.**  
**LEO 386-25/33/40SC-HQ (386-SC-HQ)**

... continued from previous page

USER CONFIGURABLE SETTINGS		
Function	Jumper	Position
í NPU mode select synchronous with CPU	J8	pins 1 & 2 closed
NPU mode select asynchronous with CPU	J8	pins 2 & 3 closed
í Monitor type select monochrome	JP2	Open
Monitor type select color	JP2	Closed

DRAM CONFIGURATION		
Size	Bank 0	Bank 1
1MB	(4) 256K x 9	NONE
2MB	(4) 256K x 9	(4) 256K x 9
4MB	(4) 1M x 9	NONE
5MB	(4) 256K x 9	(4) 1M x 9
8MB	(4) 1M x 9	(4) 1M x 9
16MB	(4) 4M x 9	NONE
17MB	(4) 256K x 9	(4) 4M x 9
20MB	(4) 1M x 9	(4) 4M x 9
32MB	(4) 4M x 9	(4) 4M x 9

CACHE CONFIGURATION		
Size	Bank 0	TAG
32KB	(4) 8K x 8	(1) 8K x 8
128KB	(4) 32K x 8	(1) 32K x 8

CACHE JUMPER CONFIGURATION									
Size	JS1	JS2	JS3	JS4	JS5	JS6	JS7	JS8	JS9
32KB	1 & 2	1 & 2	1 & 2	1 & 2	1 & 2	1 & 2	1 & 2	1 & 2	1 & 2
128KB	2 & 3	2 & 3	2 & 3	2 & 3	2 & 3	2 & 3	2 & 3	2 & 3	2 & 3

Note: Pins designated should be in the closed position.