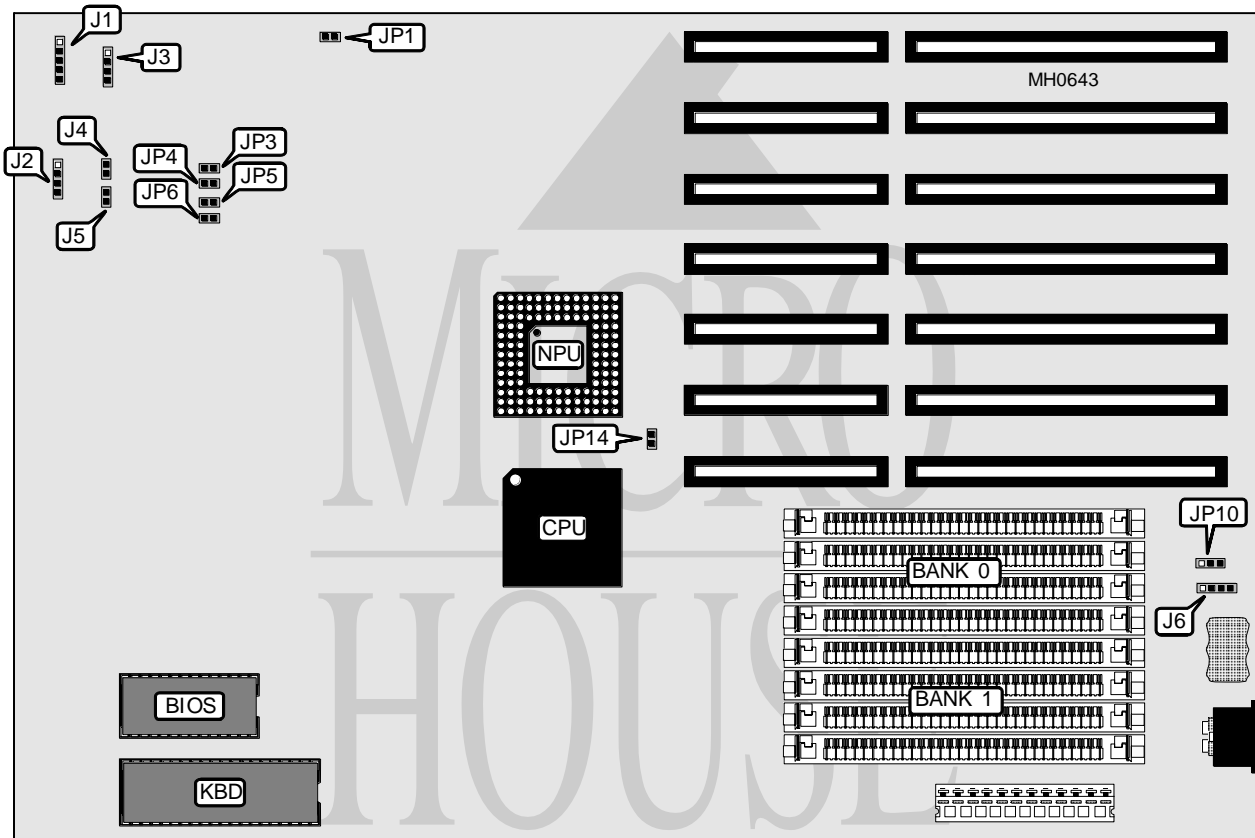


BIOSTAR MICROTECH INTERNATIONAL CORPORATION

MB - 1325VT / MB - 1333VT

Processor	80386DX
Processor Speed	25/33MHz
Chip Set	VLSI
Max. Onboard DRAM	32MB
Cache	None
BIOS	AMI
Dimensions	330mm x 219mm
I/O Options	None
NPU Options	80387/3167



CONNECTIONS

Purpose	Location	Purpose	Location
Power LED & keylock	J1	Reset switch	J4
Speaker	J2	Turbo switch	J5
Turbo LED	J3	External battery	J6

Continued on next page . . .

BIOSTAR MICROTECH INTERNATIONAL CORPORATION
MB - 1325VT / MB - 1333VT

... continued from previous page

USER CONFIGURABLE SETTINGS		
Function	Jumper	Position
í Monitor type select color	JP1	Closed
Monitor type select monochrome	JP1	Open
í NPU type select 80387	JP8	pins 1 & 2 closed
NPU type select 3167	JP8	pins 2 & 3 closed
í CMOS memory normal operation	JP9	pins 1 & 2 closed
CMOS memory clear	JP9	pins 3 & 4 closed
í Pipeline mode enabled	JP14	Closed
Pipeline mode disabled	JP14	Open
Note: The locations of JP8 & JP9 are unidentified.		

DRAM CONFIGURATION		
Size	Bank 0	Bank 1
1MB	(4) 256K x 9	NONE
2MB	(4) 256K x 9	(4) 256K x 9
4MB	(4) 1M x 9	NONE
5MB	(4) 256K x 9	(4) 1M x 9
8MB	(4) 1M x 9	(4) 1M x 9
16MB	(4) 4M x 9	NONE
17MB	(4) 256K x 9	(4) 4M x 9
20MB	(4) 1M x 9	(4) 4M x 9
32MB	(4) 4M x 9	(4) 4M x 9

KEYBOARD CONTROLLER CONFIGURATION				
Setting	JP3	JP4	JP5	JP6
controller set on pin 23	Closed	Open	Open	Open
controller set on pin 24	Open	Closed	Open	Open
controller set on pin 27	Open	Open	Closed	Open
controller set on pin 32	Open	Open	Open	Closed