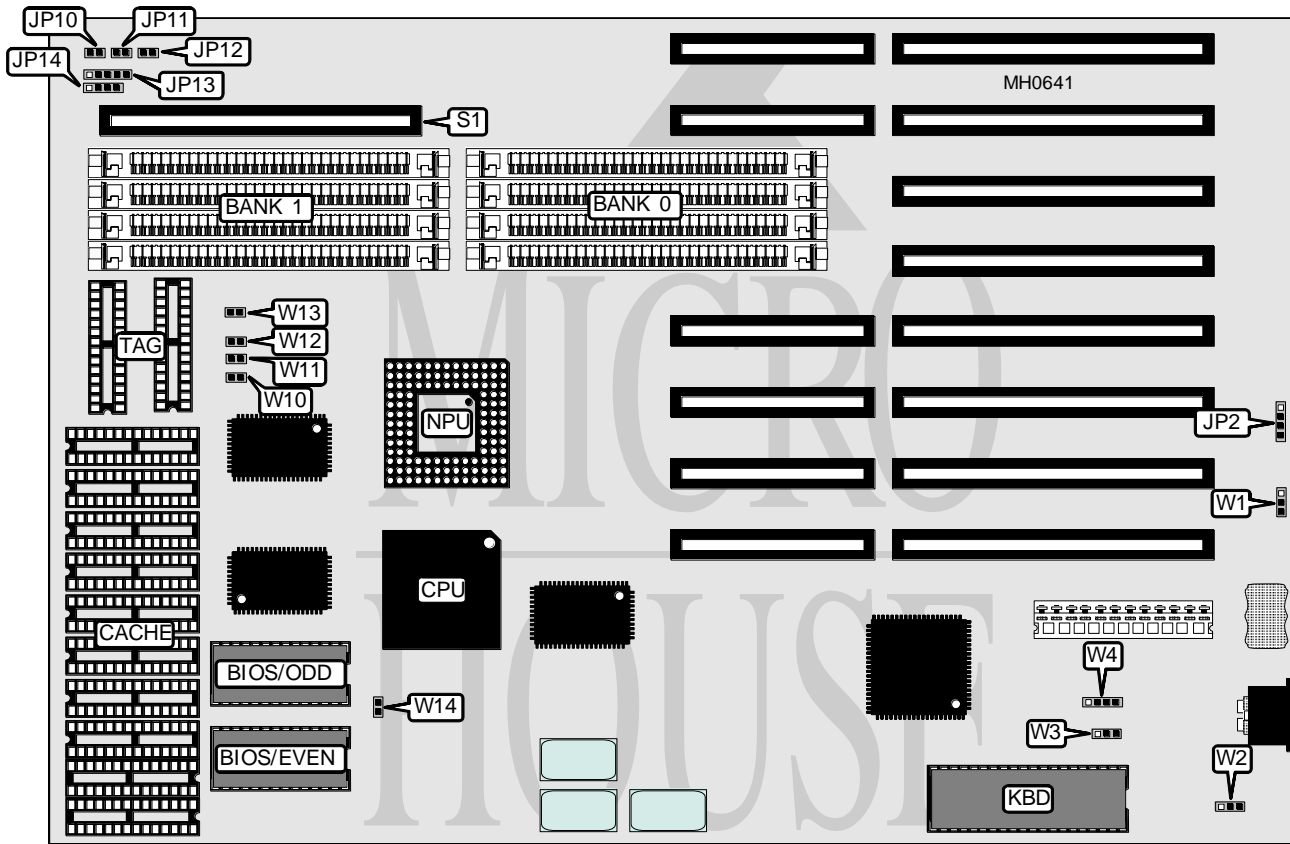


JAMICON

KMC-33K 80386-33

Processor	80386DX
Processor Speed	33MHz
Chip Set	Unknown
Max. Onboard DRAM	8MB
Cache	None
BIOS	AMI/Award
Dimensions	330mm x 218mm
I/O Options	32-bit external memory card slot
NPU Options	80387/3167



CONNECTIONS

Purpose	Location	Purpose	Location
External battery	JP2	Power LED & keylock	JP13
Turbo LED	JP10	Speaker	JP14
Turbo switch	JP11	32-bit external memory card	S1
Reset switch	JP12		

Note: All cache connections, jumpers and sizes are unidentified.

Continued on next page . . .

JAMICON

K M C - 3 3 K 8 0 3 8 6 - 3 3

... continued from previous page

USER CONFIGURABLE SETTINGS		
Function	Jumper	Position
í Battery type select external	W1	pins 1 & 2 closed
Battery type select internal	W1	pins 2 & 3 closed
í CMOS memory normal operation	W2	pins 1 & 2 closed
CMOS memory clear	W2	pins 2 & 3 closed
í Monitor type select color	W3	Closed
Monitor type select monochrome	W3	Open
í BIOS type select AMI	W5	pins 1 & 2 closed
BIOS type select AWARD	W5	pins 2 & 3 closed
í Parity enabled	W9	Open
Parity disabled	W9	Closed
í 128-byte internal cache enabled, external cache disabled	W10 to W13	Closed
128-byte internal cache disabled, external cache enabled	W10 to W13	Open
í NPU mode select asynchronous with CPU	W14	Closed
NPU mode select synchronous with CPU	W14	Open

DRAM CONFIGURATION		
Size	Bank 0	Bank 1
1MB	(4) 256K x 9	NONE
2MB	(4) 256K x 9	(4) 256K x 9
4MB	(4) 1M x 9	NONE
8MB	(4) 1M x 9	(4) 1M x 9

CPU SPEED CONFIGURATION	
Speed	JP11
25MHz	Closed
33MHz	Open