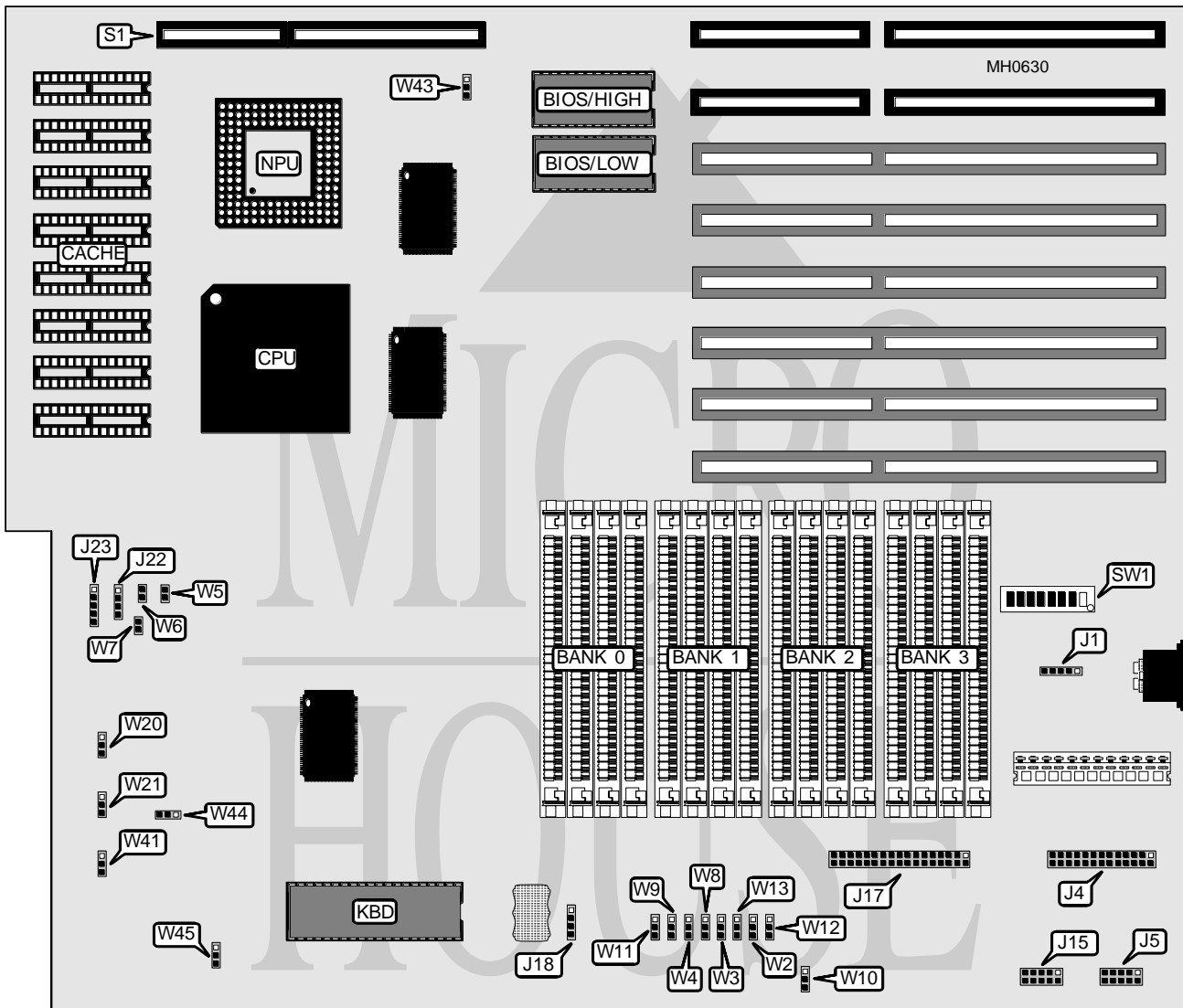


MICRONICS COMPUTERS, INC.

80486 ASIC EISA

Processor	80486DX/80486DX2
Processor Speed	25/33/50(internal)MHz
Chip Set	Micronics
Max. Onboard DRAM	64MB
Cache	64/256KB
BIOS	Phoenix
Dimensions	355mm x 302mm
I/O Options	32-bit external memory card slot
NPU Options	4167



Continued on next page . . .

MICRONICS COMPUTERS, INC.

80486 ASIC EISA

... continued from previous page

CONNECTIONS			
Purpose	Location	Purpose	Location
External keyboard	J1	Speaker	J22
Parallel port	J4	Power LED & keylock	J23
Serial port COM1	J5	Reset switch	W5
Serial port COM2	J15	Turbo switch	W6
Floppy drive interface	J17	Turbo LED	W7
External battery	J18	Local bus expansion slot	S1

USER CONFIGURABLE SETTINGS		
Function	Jumper/Switch	Position
í Factory configured - do not alter	W8	pins 1 & 2 closed
í Factory configured - do not alter	W10	pins 2 & 3 closed
í Factory configured - do not alter	W11	pins 2 & 3 closed
í Factory configured - do not alter	W12	pins 1 & 2 closed
í Floppy drive interface enabled	W13	pins 1 & 2 closed
Floppy drive interface disabled	W13	pins 2 & 3 closed
í CPU type select 80486DX-33	W43	Open
CPU type select 80486DX2-50	W43	pins 1 & 2 closed
í Factory configured - do not alter	W45	pins 1 & 2 closed
í Factory configured - do not alter	SW1/6	On
í Factory configured - do not alter	SW1/7	Off
í Monitor type select color	SW1/8	On
Monitor type select monochrome	SW1/8	Off

DRAM CONFIGURATION				
Size	Bank 0	Bank 1	Bank 2	Bank 3
1MB	(4) 256K x 9	NONE	NONE	NONE
2MB	(4) 256K x 9	(4) 256K x 9	NONE	NONE
3MB	(4) 256K x 9	(4) 256K x 9	(4) 256K x 9	NONE
4MB	(4) 256K x 9	(4) 256K x 9	(4) 256K x 9	(4) 256K x 9
4MB	(4) 1M x 9	NONE	NONE	NONE
5MB	(4) 256K x 9	(4) 1 M x 9	NONE	NONE
6MB	(4) 256K x 9	(4) 256K x 9	(4) 1M x 9	NONE
7MB	(4) 256K x 9	(4) 256K x 9	(4) 256K x 9	(4) 1M x 9
8MB	(4) 1M x 9	(4) 1M x 9	NONE	NONE
9MB	(4) 256K x 9	(4) 1M x 9	(4) 1M x 9	NONE
10MB	(4) 256K x 9	(4) 256K x 9	(4) 1M x 9	(4) 1M x 9
12MB	(4) 1M x 9	(4) 1M x 9	(4) 1M x 9	NONE
13MB	(4) 256K x 9	(4) 1M x 9	(4) 1M x 9	(4) 1M x 9
16MB	(4) 1M x 9	(4) 1M x 9	(4) 1M x 9	(4) 1M x 9
16MB	(4) 4M x 9	NONE	NONE	NONE
20MB	(4) 1M x 9	(4) 4M x 9	NONE	NONE
24MB	(4) 1M x 9	(4) 1M x 9	(4) 4M x 9	NONE
28MB	(4) 1M x 9	(4) 1M x 9	(4) 1M x 9	(4) 4M x 9

Continued on next page . . .

MICRONICS COMPUTERS, INC.

80486 ASIC EISA

... continued from previous page

DRAM CONFIGURATION (CON'T)				
Size	Bank 0	Bank 1	Bank 2	Bank 3
32MB	(4) 4M x 9	(4) 4M x 9	NONE	NONE
36MB	(4) 1M x 9	(4) 4M x 9	(4) 4M x 9	NONE
40MB	(4) 1M x 9	(4) 1M x 9	(4) 4M x 9	(4) 4M x 9
48MB	(4) 4M x 9	(4) 4M x 9	(4) 4M x 9	NONE
52MB	(4) 1M x 9	(4) 4M x 9	(4) 4M x 9	(4) 4M x 9
64MB	(4) 4M x 9	(4) 4M x 9	(4) 4M x 9	(4) 4M x 9

DRAM SWITCH CONFIGURATION					
Size	SW1/1	SW1/2	SW1/3	SW1/4	SW1/5
1MB	On	On	On	On	On
2MB	Off	On	On	On	On
3MB	On	Off	On	On	On
4MB ¹	Off	Off	On	On	On
4MB ²	On	On	Off	On	On
5MB	On	On	Off	Off	On
6MB	On	Off	On	Off	On
7MB	Off	On	On	Off	On
8MB	Off	On	Off	On	On
9MB	On	Off	Off	Off	On
10MB	Off	Off	On	Off	On
12MB	On	Off	Off	On	On
13MB	Off	Off	Off	Off	On
16MB ¹	Off	Off	Off	On	On
16MB ³	On	On	Off	On	Off
20MB	On	On	Off	Off	Off
24MB	On	Off	On	Off	Off
28MB	Off	On	On	Off	Off
32MB	Off	On	Off	On	Off
36MB	On	Off	Off	Off	Off
40MB	Off	Off	On	Off	Off
48MB	On	Off	Off	On	Off
52MB	Off	Off	Off	Off	Off
64MB	Off	Off	Off	On	Off

Note ¹: Use this setting when banks are populated with (4) 256K x 9 SIMMs
 Note ²: Use this setting when banks are populated with (4) 1M x 9 SIMMs
 Note ³: Use this setting when banks are populated with (4) 4M x 9 SIMMs

CACHE CONFIGURATION	
Size	Bank 0
64KB	(8) 8K x 8
256KB	(8) 32K x 8

Continued on next page . . .

MICRONICS COMPUTERS, INC.

80486 ASIC EISA

... continued from previous page

CACHE JUMPER CONFIGURATION				
Size	W20	W21	W41	W44
64KB	pins 2 & 3 closed	Open	Open	Open
256KB	pins 1 & 2 closed	pins 1 & 2 closed	pins 1 & 2 closed	pins 1 & 2 closed

PARALLEL PORT CONFIGURATION		
Size	W3	W4
LPT1	pins 1 & 2 closed	pins 2 & 3 closed
LPT2	pins 1 & 2 closed	pins 1 & 2 closed
LPT3	pins 2 & 3 closed	pins 1 & 2 closed
Disabled	pins 2 & 3 closed	pins 2 & 3 closed

SERIAL COM PORT CONFIGURATION		
Size	W2	W9
COM1 (J5) and COM2 (J15) enabled	pins 1 & 2 closed	pins 1 & 2 closed
COM1 (J5) enabled and COM2 (J15) disabled	pins 1 & 2 closed	pins 2 & 3 closed
COM1 (J5) disabled and COM2 (J15) enabled	pins 2 & 3 closed	pins 1 & 2 closed
COM1 (J5) and COM2 (J15) disabled	pins 2 & 3 closed	pins 2 & 3 closed