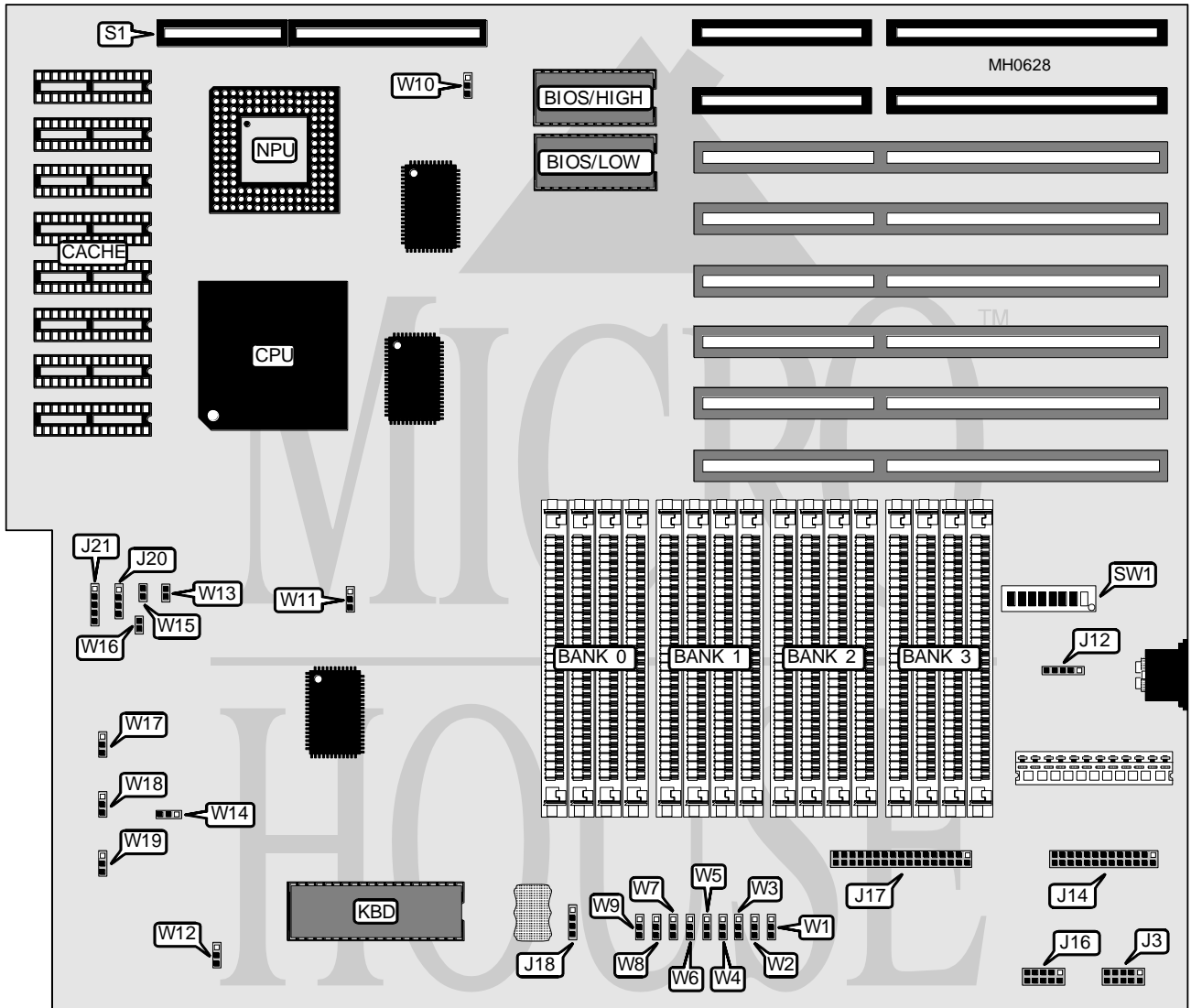


MICRONICS COMPUTERS, INC.

80486 ASIC EISA 50MHz

Processor	80486DX
Processor Speed	50MHz
Chip Set	Micronics
Max. Onboard DRAM	64MB
Cache	64/256KB
BIOS	Phoenix
Dimensions	355mm x 302mm
I/O Options	32-bit local bus video card slot
NPU Options	4167



Continued on next page . . .

MICRONICS COMPUTERS, INC.

80486 ASIC EISA 50MHz

... continued from previous page

CONNECTIONS			
Purpose	Location	Purpose	Location
Serial port 1	J3	Speaker	J20
External keyboard	J12	Power LED & keylock	J21
Parallel port	J14	Reset switch	W13
Serial port 2	J16	Turbo switch	W15
Floppy drive interface	J17	Turbo LED	W16
External battery	J18	32-bit local bus video card	S1

USER CONFIGURABLE SETTINGS		
Function	Jumper/Switch	Position
í Factory configured - do not alter	W1	pins 1 & 2 closed
í Floppy drive interface enabled	W3	pins 1 & 2 closed
Floppy drive interface disabled	W3	pins 2 & 3 closed
í Factory configured - do not alter	W5	pins 2 & 3 closed
í Factory configured - do not alter	W6	pins 1 & 2 closed
í Factory configured - do not alter	W9	pins 2 & 3 closed
í Factory configured - do not alter	W10	pins 1 & 2 closed
í Factory configured - do not alter	W11	pins 1 & 2 closed
í Factory configured - do not alter	W12	pins 1 & 2 closed
í Factory configured - do not alter	SW1/6	On
í Factory configured - do not alter	SW1/7	Off
í Monitor type select color	SW1/8	On
Monitor type select monochrome	SW1/8	Off

DRAM CONFIGURATION				
Size	Bank 0	Bank 1	Bank 2	Bank 3
1MB	(4) 256K x 9	NONE	NONE	NONE
2MB	(4) 256K x 9	(4) 256K x 9	NONE	NONE
3MB	(4) 256K x 9	(4) 256K x 9	(4) 256K x 9	NONE
4MB	(4) 256K x 9	(4) 256K x 9	(4) 256K x 9	(4) 256K x 9
4MB	(4) 1M x 9	NONE	NONE	NONE
5MB	(4) 256K x 9	(4) 1M x 9	NONE	NONE
6MB	(4) 256K x 9	(4) 256K x 9	(4) 1M x 9	NONE
7MB	(4) 256K x 9	(4) 256K x 9	(4) 256K x 9	(4) 1M x 9
8MB	(4) 1M x 9	(4) 1M x 9	NONE	NONE
9MB	(4) 256K x 9	(4) 1M x 9	(4) 1M x 9	NONE
10MB	(4) 256K x 9	(4) 256K x 9	(4) 1M x 9	(4) 1M x 9
12MB	(4) 1M x 9	(4) 1M x 9	(4) 1M x 9	NONE
13MB	(4) 256K x 9	(4) 1M x 9	(4) 1M x 9	(4) 1M x 9
16MB	(4) 1M x 9	(4) 1M x 9	(4) 1M x 9	(4) 1M x 9
16MB	(4) 4M x 9	NONE	NONE	NONE
20MB	(4) 1M x 9	(4) 4M x 9	NONE	NONE
24MB	(4) 1M x 9	(4) 1M x 9	(4) 4M x 9	NONE
28MB	(4) 1M x 9	(4) 1M x 9	(4) 1M x 9	(4) 4M x 9

Continued on next page ...

MICRONICS COMPUTERS, INC.

80486 ASIC EISA 50MHz

... continued from previous page

DRAM CONFIGURATION (CON'T)				
Size	Bank 0	Bank 1	Bank 2	Bank 3
32MB	(4) 4M x 9	(4) 4M x 9	NONE	NONE
36MB	(4) 1M x 9	(4) 4M x 9	(4) 4M x 9	NONE
40MB	(4) 1M x 9	(4) 1M x 9	(4) 4M x 9	(4) 4M x 9
48MB	(4) 4M x 9	(4) 4M x 9	(4) 4M x 9	NONE
52MB	(4) 1M x 9	(4) 4M x 9	(4) 4M x 9	(4) 4M x 9
64MB	(4) 4M x 9	(4) 4M x 9	(4) 4M x 9	(4) 4M x 9

DRAM JUMPER CONFIGURATION					
Size	SW1/1	SW1/2	SW1/3	SW1/4	SW1/5
1MB	On	On	On	On	On
2MB	Off	On	On	On	On
3MB	On	Off	On	On	On
4MB ¹	Off	Off	On	On	On
4MB ²	On	On	Off	On	On
5MB	On	On	Off	Off	On
6MB	On	Off	On	Off	On
7MB	Off	On	On	Off	On
8MB	Off	On	Off	On	On
9MB	On	Off	Off	Off	On
10MB	Off	Off	On	Off	On
12MB	On	Off	Off	On	On
13MB	Off	Off	Off	Off	On
16MB ¹	Off	Off	Off	On	On
16MB ³	On	On	Off	On	Off
20MB	On	On	Off	Off	Off
24MB	On	Off	On	Off	Off
28MB	Off	On	On	Off	Off
32MB	Off	On	Off	On	Off
36MB	On	Off	Off	Off	Off
40MB	Off	Off	On	Off	Off
48MB	On	Off	Off	On	Off
52MB	Off	Off	Off	Off	Off
64MB	Off	Off	Off	On	Off

Note ¹: Use this setting when banks are populated with (4) 256K x 9 SIMMs.
 Note ²: Use this setting when banks are populated with (4) 1M x 9 SIMMs.
 Note ³: Use this setting when banks are populated with (4) 4M x 9 SIMMs.

CACHE CONFIGURATION	
Size	Cache
64KB	(8) 8K x 8
256KB	(8) 32K x 8

Continued on next page . . .

MICRONICS COMPUTERS, INC.
80486 ASIC EISA 50MHz

... continued from previous page

CACHE JUMPER CONFIGURATION				
Size	W14	W17	W18	W19
64KB	pins 2 & 3 closed	Open	Open	Open
256KB	pins 1 & 2 closed	pins 1 & 2 closed	pins 1 & 2 closed	pins 1 & 2 closed

PARALLEL PORT CONFIGURATION		
Setting	W4	W7
LPT1	pins 1 & 2 closed	pins 2 & 3 closed
LPT2	pins 1 & 2 closed	pins 1 & 2 closed
LPT3	pins 2 & 3 closed	pins 1 & 2 closed
Disabled	pins 2 & 3 closed	pins 2 & 3 closed

SERIAL PORT CONFIGURATION		
Setting	W2	W8
COM1 & COM2 enabled	pins 1 & 2 closed	pins 1 & 2 closed
COM1 enabled & COM2 disabled	pins 1 & 2 closed	pins 2 & 3 closed
COM1 disabled & COM2 enabled	pins 2 & 3 closed	pins 1 & 2 closed
COM1 & COM2 disabled	pins 2 & 3 closed	pins 2 & 3 closed