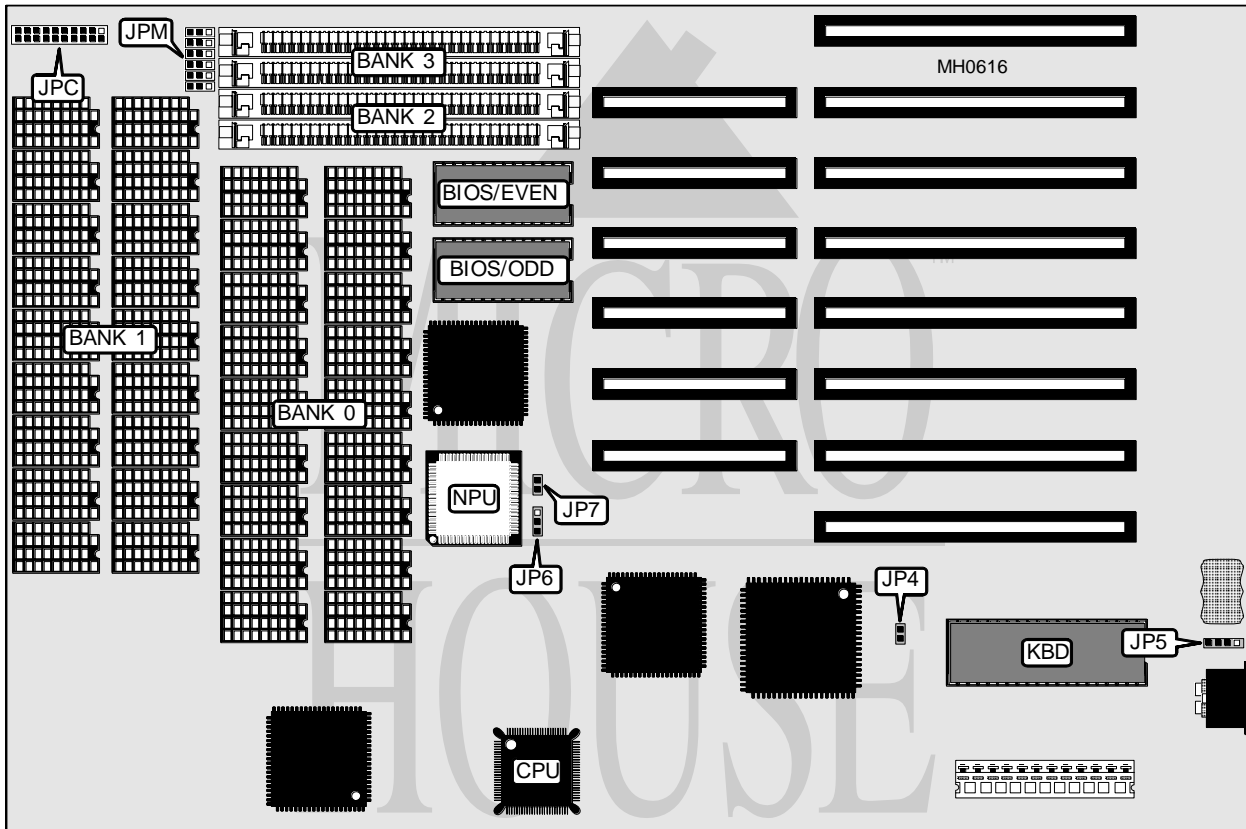


UNIDENTIFIED NEAT - P 9

Processor 80386SX
Processor Speed 16/20MHz
Chip Set C & T NEAT
Max. Onboard DRAM 8MB
Cache None
BIOS Unidentified
Dimensions 330mm x 218mm
I/O Options None
NPU Options 80387SX



CONNECTIONS			
Purpose	Location	Purpose	Location
External battery	JP5	Turbo LED	JPC pins 12 & 13
Power LED & keylock	JPC pins 1 - 5	Turbo switch	JPC pins 15 - 17
Speaker	JPC pins 7 - 10	Reset switch	JPC pins 19 & 20

Continued on next page . . .

UNIDENTIFIED

NEAT - P 9

... continued from previous page

USER CONFIGURABLE SETTINGS		
Function	Jumper	Position
í Factory configured - do not alter	JP1	N/A
í Factory configured - do not alter	JP2	N/A
í Factory configured - do not alter	JP3	N/A
í Monitor type select color	JP4	Closed
Monitor type select monochrome	JP4	Open
Battery type select external	JP5	Closed
Battery type select internal	JP5	pins 2 & 3 closed
DRAM type select DIP only	JPM	pins 1 & 2 closed
DRAM type select DIP and SIMM	JPM	pins 2 & 3 closed

DRAM CONFIGURATION				
Size	Bank 0	Bank 1	Bank 2	Bank 3
1MB	(18) 41256	(18) 41256	NONE	NONE
1MB	NONE	NONE	(2) 256K x 9	(2) 256K x 9
2MB	(18) 41256	(18) 41256	(2) 256K x 9	(2) 256K x 9
4MB	(18) 411000	(18) 411000	NONE	NONE
4MB	NONE	NONE	(2) 1M x 9	(2) 1M x 9
5MB	(18) 41256	(18) 41256	(2) 1M x 9	(2) 1M x 9
8MB	(18) 411000	(18) 411000	(2) 1M x 9	(2) 1M x 9

NPU CONFIGURATION		
Setting	JP6	JP7
Disabled	pins 1 & 2 closed	Closed
Enabled	pins 2 & 3 closed	Open