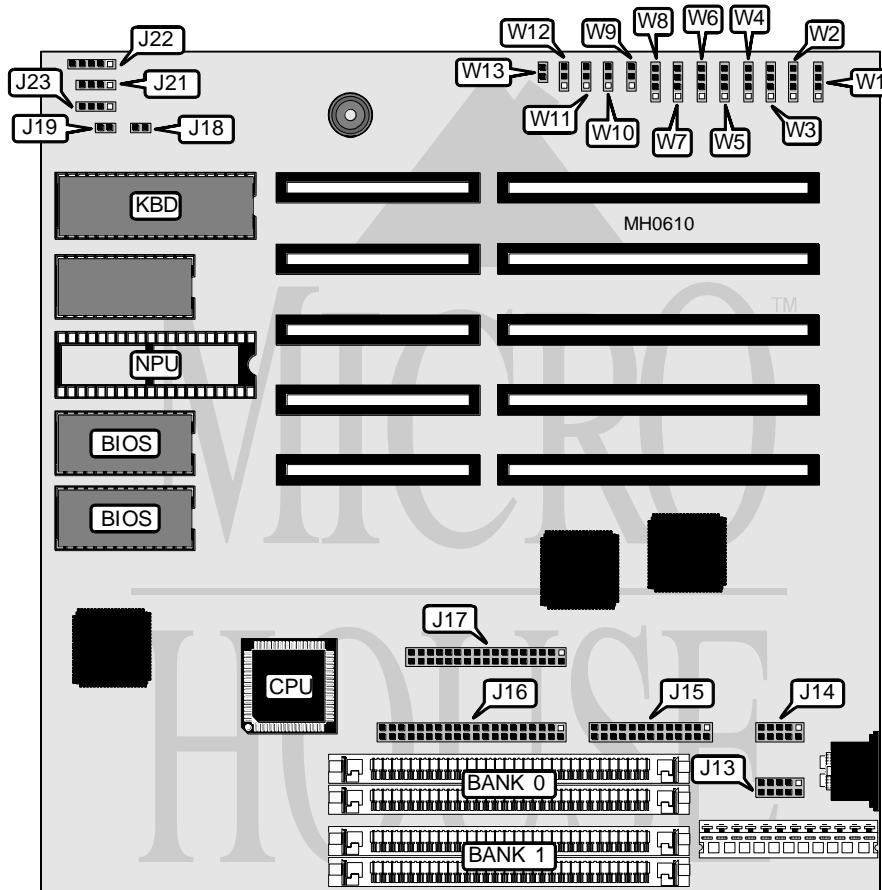


DEICO ELECTRONICS, INC.

286 - MIDGET

Processor	80286
Processor Speed	12/16MHz
Chip Set	OPTI
Max. Onboard DRAM	4MB
Cache	None
BIOS	AMI
Dimensions	330mm x 218mm
I/O Options	Parallel port, serial ports (2), floppy drive interface, IDE interface
NPU Options	80287



CONNECTIONS			
Purpose	Location	Purpose	Location
Serial port 1	J13	Reset switch	J19
Serial port 2	J14	Speaker	J21
Parallel port	J15	Power LED & keylock	J22
IDE interface	J16	Turbo switch	J23 pins 3 & 4
Floppy drive interface	J17	Turbo LED	J23 pins 1 & 2
IDE interface LED	J18		

Continued on next page . . .

DEICO ELECTRONICS, INC.

286 - M I D G E T

... continued from previous page

USER CONFIGURABLE SETTINGS		
Function	Jumper	Position
í Parallel port (J15) select LPT1	W1	pins 1 & 2 closed
Parallel port (J15) select LPT2	W1	pins 2 & 3 closed
Parallel port (J15) disabled	W1	pins 3 & 4 closed
í Serial port 1 (J13) select COM1	W2	pins 1 & 2 closed
Serial port 1 (J13) select COM3	W2	pins 2 & 3 closed
Serial port 1 (J13) disabled	W2	pins 3 & 4 closed
í Serial port 2 (J14) select COM1	W3	pins 1 & 2 closed
Serial port 2 (J14) select COM3	W3	pins 2 & 3 closed
Serial port 2 (J14) disabled	W3	pins 3 & 4 closed
í Parallel port (J15) select IRQ7	W4	pins 1 & 2 closed
Parallel port (J15) select IRQ5	W4	pins 2 & 3 closed
Parallel port (J15) select disabled	W4	pins 3 & 4 closed
IRQ3 select serial port 1 (J13)	W5	pins 2 & 3 closed
í IRQ3 select serial port 2 (J14)	W5	pins 1 & 2 closed
IRQ3 disabled	W5	pins 3 & 4 closed
í IRQ4 select serial port 1 (J13)	W6	pins 2 & 3 closed
IRQ4 select serial port 2 (J14)	W6	pins 1 & 2 closed
IRQ4 disabled	W6	pins 3 & 4 closed
IRQ5 select serial port 1 (J13)	W7	pins 2 & 3 closed
IRQ5 select serial port 2 (J14)	W7	pins 1 & 2 closed
í IRQ5 disabled	W7	pins 3 & 4 closed
IRQ9 select serial port 1 (J13)	W8	pins 2 & 3 closed
IRQ9 select serial port 2 (J14)	W8	pins 1 & 2 closed
í IRQ9 disabled	W8	pins 3 & 4 closed
í Floppy drive interface enabled	W9	pins 1 & 2 closed
Floppy drive interface disabled	W9	pins 2 & 3 closed
í IDE interface enabled	W10	pins 1 & 2 closed
IDE interface disabled	W10	pins 2 & 3 closed
í Monitor type select color	W11	pins 1 & 2 closed
Monitor type select monochrome	W11	pins 2 & 3 closed
í Internal speaker enabled	W12	pins 1 & 2 closed
External speaker enabled	W12	pins 2 & 3 closed
í Factory configured - do not alter	W13	Open

DRAM CONFIGURATION		
Size	Bank 0	Bank 1
512KB	(2) 256K x 9	NONE
640KB	(2) 256K x 9	(2) 64K x 9
1MB	(2) 256K x 9	(2) 256K x 9
2MB	(2) 1M x 9	NONE
2.5MB	(2) 256K x 9	(2) 1M x 9
4MB	(2) 1M x 9	(2) 1M x 9