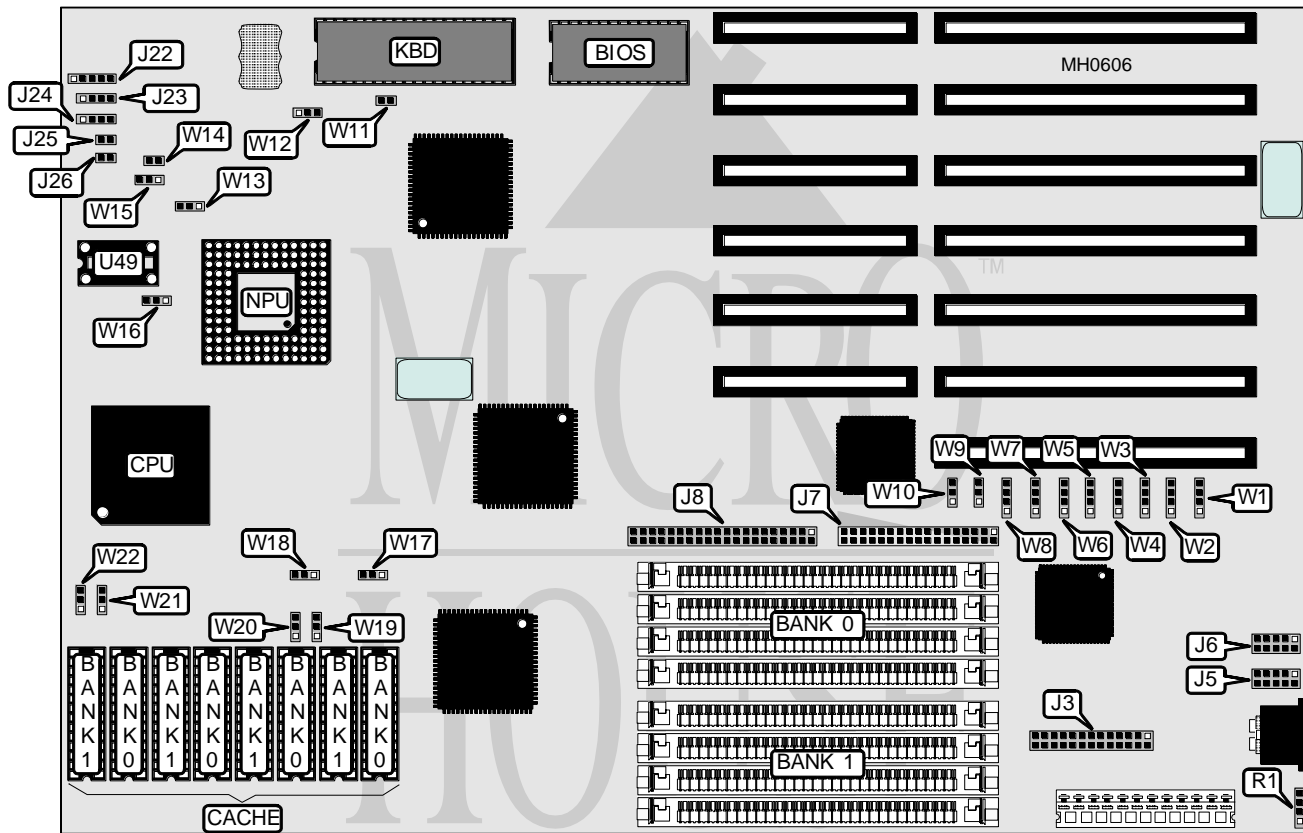


DEICO ELECTRONICS, INC.

W B - 3 8 6 C

Processor	80386DX
Processor Speed	33/40MHz
Chip Set	OPTI
Max. Onboard DRAM	32MB
Cache	32/64/128/256KB
BIOS	AMI
Dimensions	330mm x 218mm
I/O Options	Parallel port, serial ports (2), floppy drive interface, IDE interface
NPU Options	80387/3167



CONNECTIONS

Purpose	Location	Purpose	Location
Parallel port	J3	Speaker	J23
Serial port 2	J5	Turbo switch	J24 pins 3 & 4
Serial port 1	J6	Turbo LED	J24 pins 1 & 2
IDE interface	J8	Reset switch	J25
Floppy drive interface	J7	IDE interface LED	J26
Power LED & keylock	J22	External battery	R1

Continued on next page . . .

DEICO ELECTRONICS, INC.

W B - 3 8 6 C

... continued from previous page

USER CONFIGURABLE SETTINGS		
Function	Jumper	Position
í Parallel port select LPT1	W1	pins 1 & 2 closed
Parallel port select LPT2	W1	pins 2 & 3 closed
Parallel port disabled	W1	pins 3 & 4 closed
í Serial port 1 select COM1	W2	pins 1 & 2 closed
Serial port 1 select COM3	W2	pins 2 & 3 closed
Serial port 1 disabled	W2	pins 3 & 4 closed
í Serial port 2 select COM2	W3	pins 1 & 2 closed
Serial port 2 select COM4	W3	pins 2 & 3 closed
Serial port 2 disabled	W3	pins 3 & 4 closed
í Parallel port IRQ select IRQ7	W4	pins 1 & 2 closed
Parallel port IRQ select IRQ5	W4	pins 2 & 3 closed
Parallel portselect no interrupt	W4	pins 3 & 4 closed
IRQ3 select serial port 1	W5	pins 1 & 2 closed
í IRQ3 select serial port 2	W5	pins 2 & 3 closed
IRQ3 disabled	W5	pins 3 & 4 closed
í IRQ4 select serial port 1	W6	pins 1 & 2 closed
IRQ4 select serial port 2	W6	pins 2 & 3 closed
IRQ4 disabled	W6	pins 3 & 4 closed
IRQ5 select serial port 1	W7	pins 1 & 2 closed
IRQ5 select serial port 2	W7	pins 2 & 3 closed
í IRQ5 disabled	W7	pins 3 & 4 closed
IRQ9 select serial port	W8	pins 1 & 2 closed
IRQ9 select serial port 2	W8	pins 2 & 3 closed
í IRQ9 disabled	W8	pins 3 & 4 closed
í Floppy interface enabled	W9	pins 1 & 2 closed
Floppy interface disabled	W9	pins 2 & 3 closed
í IDE interface enabled	W10	pins 1 & 2 closed
IDE interface disabled	W10	pins 2 & 3 closed
í Factory configured - do not alter	W11	open
í Monitor type select color	W12	pins 1 & 2 closed
Monitor type select monochrome	W12	pins 2 & 3 closed
í Battery type select internal	W14	closed
Battery type select external	W14	open
í CMOS memory normal operation	W15	pins 1 & 2 closed
CMOS memory clear	W15	pins 2 & 3 closed
í NPU mode select synchronous with CPU	W16	pins 2 & 3 closed
NPU mode select synchronous with oscillator installed at U49	W16	pins 1 & 2 closed

Continued on next page . . .

DEICO ELECTRONICS, INC.
W B - 3 8 6 C

... continued from previous page

DRAM CONFIGURATION		
Size	Bank 0	Bank 1
1MB	(4) 256K x 9	NONE
2MB	(4) 256K x 9	(4) 256K x 9
4MB	(4) 1M x 9	NONE
5MB	(4) 256K x 9	(4) 1M x 9
8MB	(4) 1M x 9	(4) 1M x 9
16MB	(4) 4M x 9	NONE
20MB	(4) 1M x 9	(4) 4M x 9
32MB	(4) 4M x 9	(4) 4M x 9

CACHE CONFIGURATION		
Size	Bank 0	Bank 1
32KB	(4) 8K x 8	NONE
64KB	(4) 8K x 8	(4) 8K x 8
128KB	(4) 32K x 8	NONE
256KB	(4) 32K x 8	(4) 32K x 8

CACHE JUMPER CONFIGURATION						
Size	W17	W18	W19	W20	W21	W22
32KB	1 & 2	1 & 2	1 & 2	1 & 2	1 & 2	1 & 2
64KB	1 & 2	1 & 2	1 & 2	1 & 2	2 & 3	2 & 3
128KB	2 & 3	2 & 3	1 & 2	1 & 2	2 & 3	2 & 3
256KB	2 & 3	2 & 3	2 & 3	2 & 3	2 & 3	2 & 3

Note: Pins designated should be in the closed position.

CPU SPEED CONFIGURATION		
CPU speed	Bus speed	W13
33MHz	8MHz	pins 1 & 2 closed
33MHz	11MHz	pins 2 & 3 closed
40MHz	10MHz	pins 1 & 2 closed
40MHz	13MHz	pins 2 & 3 closed