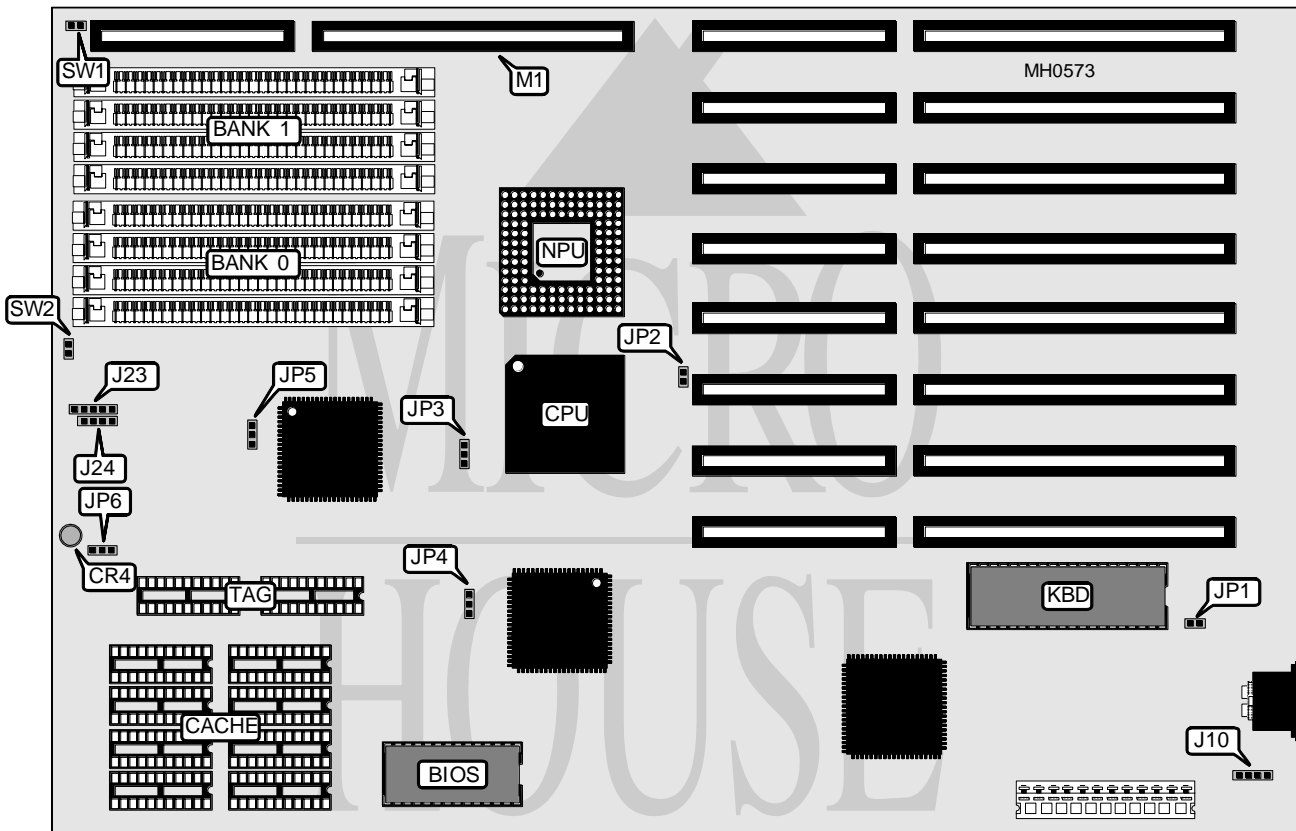


JUKO LABORATORIES, LTD.

PRO Q 386DX

Processor	80386DX
Processor Speed	25/33MHz
Chip Set	OPTI
Max. Onboard DRAM	8MB
Cache	32/64KB
BIOS	AMI
Dimensions	330mm x 218mm
I/O Options	32-bit external memory card slot
NPU Options	80387/3167



CONNECTIONS			
Purpose	Location	Purpose	Location
Turbo LED	CR4	32-bit external memory card	M1
External battery	J10	Reset switch	SW1
Power LED & keylock	J23	Turbo switch	SW2
Speaker	J24		

Continued on next page . . .

JUKO LABORATORIES, LTD.
PRO Q 386DX

... continued from previous page

USER CONFIGURABLE SETTINGS		
Function	Jumper	Position
í Monitor type select color	JP1	Closed
Monitor type select monochrome	JP1	Open
í Pipeline mode disabled	JP2	Open
Pipeline mode enabled	JP2	Closed
í BIOS type select 27512	JP3	pins 1 & 2 closed
BIOS type select 27256	JP3	pins 2 & 3 closed

DRAM CONFIGURATION		
Size	Bank 0	Bank 1
1MB	(4) 256K x 9	NONE
2MB	(4) 256K x 9	(4) 256K x 9
4MB	(4) 1M x 9	NONE
8MB	(4) 1M x 9	(4) 1M x 9

CACHE CONFIGURATION			
Size	Bank 0	Bank 1	TAG
32KB	(4) 64K x 1	NONE	(2) 16K x 4
64KB	(4) 64K x 1	(4) 64K x 1	(2) 16K x 4

CACHE JUMPER CONFIGURATION			
Size	JP4	JP5	JP6
32KB	pins 1 & 2 closed	pins 1 & 2 closed	pins 1 & 2 closed
64KB	pins 2 & 3 closed	pins 2 & 3 closed	pins 2 & 3 closed