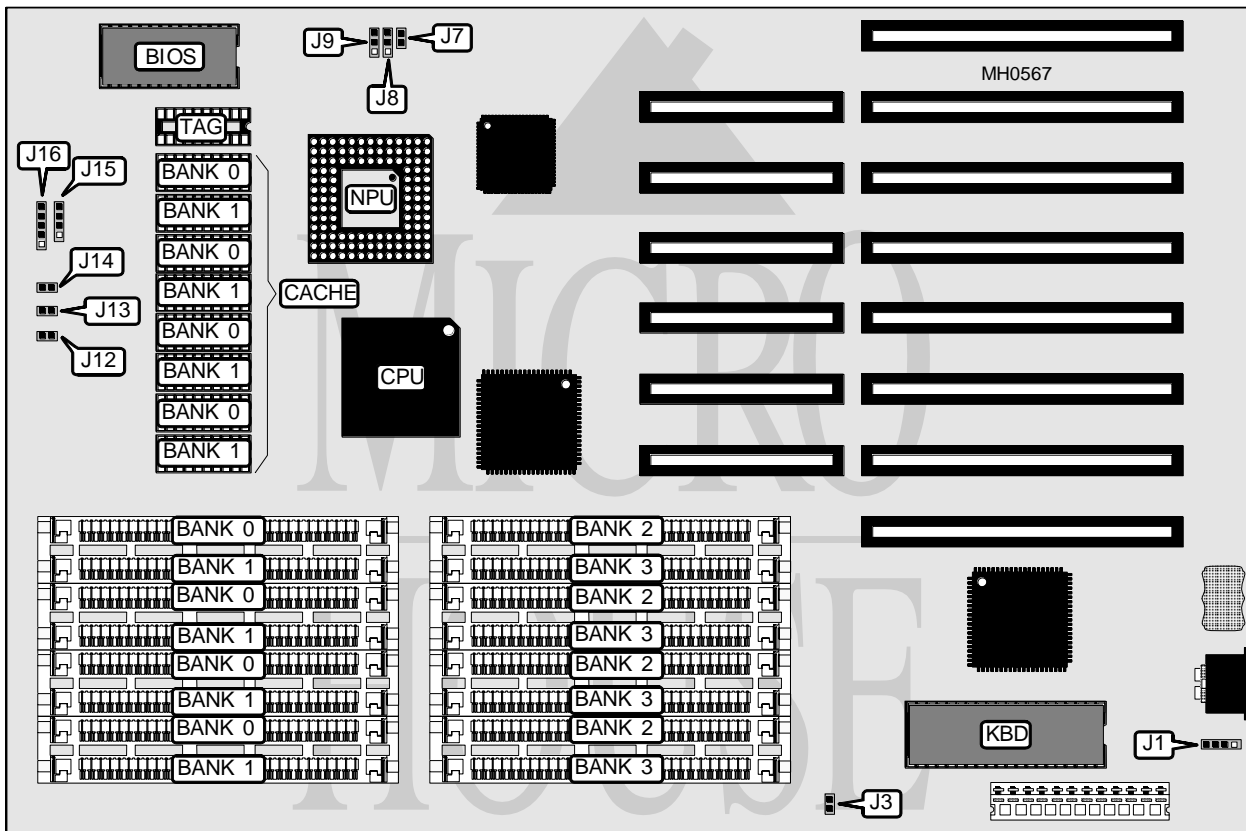


# UNIDENTIFIED

## 386/33 CACHE

<b>Processor</b>	80386DX
<b>Processor Speed</b>	33MHz
<b>Chip Set</b>	OPTI
<b>Max. Onboard DRAM</b>	16MB
<b>Cache</b>	32/64KB
<b>BIOS</b>	AMI
<b>Dimensions</b>	330mm x 218mm
<b>I/O Options</b>	None
<b>NPU Options</b>	80387/3167



CONNECTIONS			
Purpose	Location	Purpose	Location
External battery	J1	Turbo LED	J14
Reset switch	J12	Speaker	J15
Turbo switch	J13	Power LED & Keylock	J16

Continued on next page . . .

# UNIDENTIFIED

## 386/33 CACHE

... continued from previous page

USER CONFIGURABLE SETTINGS		
Function	Jumper	Position
í Battery type select internal	J1	pins 1 & 2 closed
Battery type select external	J1	Closed
í Factory configured - do not alter	J2	N/A
í Monitor type select monochrome	J3	Open
Monitor type select color	J3	Closed
í Factory configured - do not alter	J4	N/A
í Factory configured - do not alter	J5	N/A
í Factory configured - do not alter	J6	N/A
í Factory configured - do not alter	J10	N/A
í Factory configured - do not alter	J11	N/A
Note: The locations of jumpers J2, J4, J5, J6, J10, & J11 are unidentified.		

DRAM CONFIGURATION				
Size	Bank 0	Bank 1	Bank 2	Bank 3
1MB	(4) 256K x 9	NONE	NONE	NONE
2MB	(4) 256K x 9	(4) 256K x 9	NONE	NONE
3MB	(4) 256K x 9	(4) 256K x 9	(4) 256K x 9	NONE
4MB	(4) 256K x 9	(4) 256K x 9	(4) 256K x 9	(4) 256K x 9
4MB	(4) 1M x 9	NONE	NONE	NONE
5MB	(4) 1M x 9	(4) 256K x 9	NONE	NONE
6MB	(4) 1M x 9	(4) 256K x 9	(4) 256K x 9	NONE
7MB	(4) 1M x 9	(4) 256K x 9	(4) 256K x 9	(4) 256K x 9
8MB	(4) 1M x 9	(4) 1M x 9	NONE	NONE
9MB	(4) 1M x 9	(4) 1M x 9	(4) 256K x 9	NONE
10MB	(4) 1M x 9	(4) 1M x 9	(4) 256K x 9	(4) 256K x 9
12MB	(4) 1M x 9	(4) 1M x 9	(4) 1M x 9	NONE
13MB	(4) 1M x 9	(4) 1M x 9	(4) 1M x 9	(4) 256K x 9
16MB	(4) 1M x 9	(4) 1M x 9	(4) 1M x 9	(4) 1M x 9

CACHE CONFIGURATION			
Size	Bank 0	Bank 1	TAG
32KB	(4) 8K x 8	NONE	(1) 8K x 8
64KB	(4) 8K x 8	(4) 8K x 8	(1) 8K x 8

CACHE JUMPER CONFIGURATION			
Size	J7	J8	J9
32KB	Open	pins 1 & 2 closed	pins 1 & 2 closed
64KB	Closed	pins 2 & 3 closed	pins 2 & 3 closed