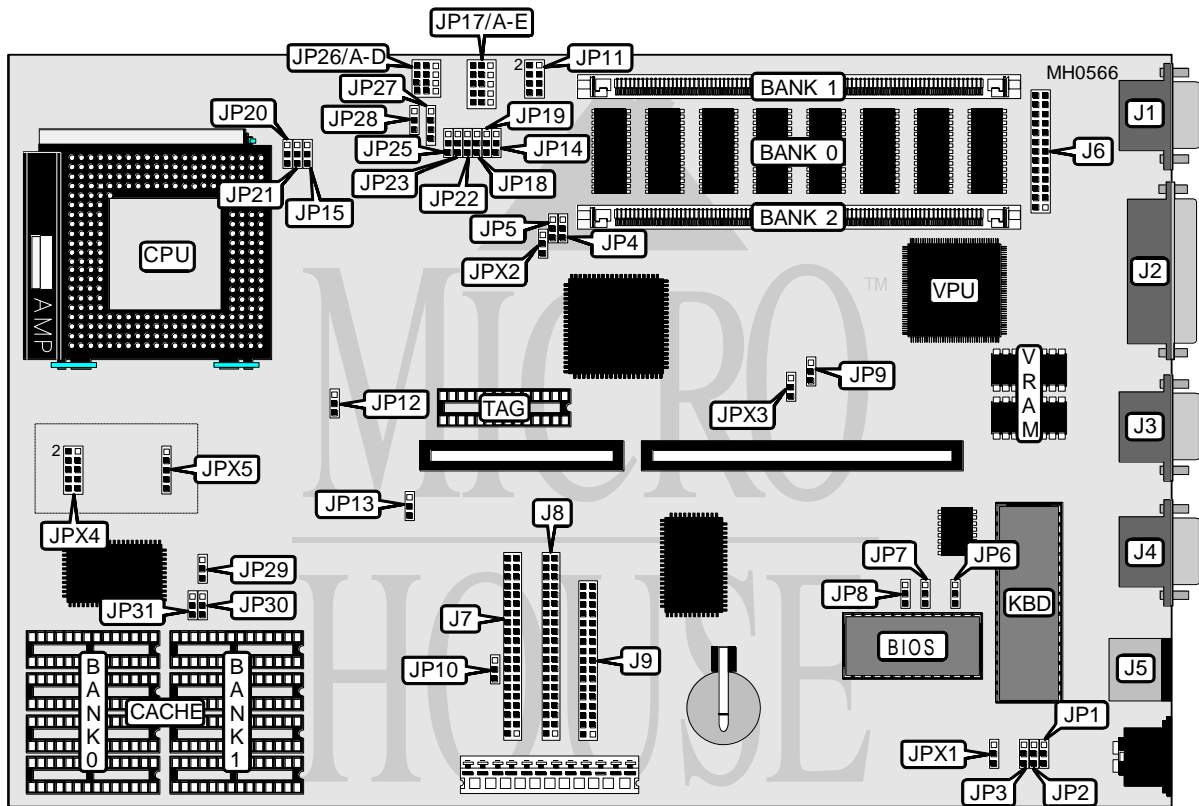


# ICL INDIANA C-SERIES/S-SERIES

<b>Processor</b>	80486SX/80486SX2/80486DX/80486DX2/AM486DX4/80486DX4
<b>Processor Speed</b>	25/33/50(internal)/66(internal)/75(internal)/100(internal)MHz
<b>Chip Set</b>	Acer
<b>Max. Onboard DRAM</b>	36MB
<b>Cache</b>	128/256KB
<b>BIOS</b>	Acer
<b>Dimensions</b>	295mm x 254mm
<b>I/O Options</b>	PS/2 mouse port, parallel port, serial ports (2), VGA port, VGA feature connector, floppy drive interface, IDE interface
<b>NPU Options</b>	None



CONNECTIONS			
Purpose	Location	Purpose	Location
VGA port	J1	VGA feature connector	J6
Parallel port	J2	IDE interface 1	J7
Serial port 1	J3	IDE interface 2	J8
Serial port 2	J4	Floppy drive interface	J9
PS/2 mouse port	J5	DX4 voltage kit connectors	JPX4 & JPX5

Continued on next page. . .

# ICL INDIANA C-SERIES/S-SERIES

... continued from previous page

USER CONFIGURABLE SETTINGS		
Function	Jumper	Position
í Normal BIOS startup display	JP1	pins 1 & 2 closed
BIOS displays Acer logo	JP1	pins 2 & 3 closed
í Password enabled	JP2	pins 1 & 2 closed
Password disabled	JP2	pins 2 & 3 closed
í Boot mode select normal boot	JP3	pins 1 & 2 closed
Boot mode select mono/COM1 boot	JP3	pins 2 & 3 closed
í First 8MB of memory enabled	JP4	pins 1 & 2 closed
First 8MB of memory disabled	JP4	pins 2 & 3 closed
í On-board memory enabled	JP5	pins 2 & 3 closed
On-board memory disabled	JP5	pins 1 & 2 closed
í Super I/O chip enabled	JP6	pins 2 & 3 closed
Super I/O chip disabled	JP6	pins 1 & 2 closed
í VGA port enabled	JP9	pins 2 & 3 closed
VGA port disabled	JP9	pins 1 & 2 closed
í IDE address port select 0F4h, 0F8h, and 0FCh	JP10	pins 1 & 2 closed
IDE address port select 074h, 078h, and 07Ch	JP10	pins 2 & 3 closed
í Reset button mode normal	JP28	pins 2 & 3 closed
Reset button mode suspend/resume	JP28	pins 1 & 2 closed
í IDE interface enabled	JP29	pins 2 & 3 closed
IDE interface disabled	JP29	pins 1 & 2 closed
í BIOS type select EPROM	JPX1	pins 2 & 3 closed
BIOS type select flash	JPX1	pins 1 & 2 closed
í Factory configured - do not alter	JPX3	N/A

DRAM CONFIGURATION			
Size	Bank 0	Bank 1	Bank 2
4MB	(8) 441000	NONE	NONE
8MB	(8) 441000	(1) 1M x 36	NONE
12MB	(8) 441000	(1) 1M x 36	(1) 1M x 36
20MB	(8) 441000	(1) 4M x 36	NONE
24MB	(8) 441000	(1) 4M x 36	(1) 1M x 36
36MB	(8) 441000	(1) 4M x 36	(1) 4M x 36

CACHE CONFIGURATION			
Size	Bank 0	Bank 1	TAG
128KB	(4) 32K x 8	NONE	(1) 32K x 8
256KB	(4) 32K x 8	(4) 32K x 8	(1) 32K x 8

CACHE JUMPER CONFIGURATION		
Size	JP30	JP31
128KB	pins 1 & 2 closed	pins 1 & 2 closed
256KB	pins 2 & 3 closed	pins 2 & 3 closed

Continued on next page. . .

# ICL

## INDIANA C-SERIES/S-SERIES

... continued from previous page

CPU TYPE CONFIGURATION					
Type	JPX2	JP13	JP14	JP15	JP17
80486SX	2 & 3	2 & 3	2 & 3	2 & 3	2 & 3
80486SX2	2 & 3	2 & 3	2 & 3	2 & 3	2 & 3
80486DX	2 & 3	2 & 3	2 & 3	2 & 3	2 & 3
80486DX2	2 & 3	2 & 3	2 & 3	2 & 3	2 & 3
AM486DX4	2 & 3	2 & 3	2 & 3	2 & 3	2 & 3
80486DX4	2 & 3	2 & 3	2 & 3	2 & 3	2 & 3

Note: Pins designated should be in the closed position.

CPU TYPE CONFIGURATION (CON'T)					
Type	JP18	JP19	JP20	JP21	JP22
80486SX	2 & 3	2 & 3	2 & 3	2 & 3	2 & 3
80486SX2	2 & 3	2 & 3	2 & 3	2 & 3	2 & 3
80486DX	2 & 3	1 & 2	2 & 3	2 & 3	1 & 2
80486DX2	2 & 3	1 & 2	2 & 3	2 & 3	1 & 2
AM486DX4	1 & 2	1 & 2	2 & 3	2 & 3	2 & 3
80486DX4	1 & 2	1 & 2	2 & 3	2 & 3	2 & 3

Note: Pins designated should be in the closed position.

CPU TYPE CONFIGURATION					
Type	JP23	JP25	JP26	JP27	JP32
80486SX	2 & 3	2 & 3	2 & 3	3 & 4	1 & 2
80486SX2	2 & 3	2 & 3	2 & 3	3 & 4	1 & 2
80486DX	2 & 3	2 & 3	1 & 2	3 & 4	1 & 2
80486DX2	2 & 3	2 & 3	1 & 2	3 & 4	1 & 2
AM486DX4	2 & 3	2 & 3	2 & 3	3 & 4	1 & 2
80486DX4	2 & 3	2 & 3	2 & 3	3 & 4	1 & 2

Note: Pins designated should be in the closed position. The locations of JP27 & JP32 are unidentified.

CPU SPEED CONFIGURATION		
Speed	JP11	JP12
25MHz	pins 1 & 5 closed	pins 2 & 3 closed
33MHz	pins 2 & 6 closed	pins 2 & 3 closed
50iMHz	pins 1 & 5 closed	pins 2 & 3 closed
66iMHz	pins 2 & 6 closed	pins 2 & 3 closed
75iMHz	pins 1 & 5 closed	pins 2 & 3 closed
100iMHz	pins 2 & 6 closed	pins 2 & 3 closed

CPU SPEED CONFIGURATION (80486DX4 ONLY)	
Speed	JP27
2x	pins 2 & 3 closed
2.5x	pins 1 & 2 closed
3x	pins 3 & 4 closed

Continued on next page. . .

# ICL INDIANA C-SERIES/S-SERIES

... continued from previous page

CPU VOLTAGE CONFIGURATION (80486DX4-100 ONLY)	
Voltage	JMP1
3.45v	pins 1 & 5 closed
3.6v	pins 2 & 6 closed
3.8v	pins 3 & 7 closed
4v	pins 4 & 8 closed
Note: JMP1 is located on the voltage regulator.	

PARALLEL PORT DMA CHANNEL CONFIGURATION			
DRQ	DACK	JP7	JP8
3	3	pins 1 & 2 closed	pins 1 & 2 closed
3	1	pins 1 & 2 closed	pins 2 & 3 closed
1	3	pins 2 & 3 closed	pins 1 & 2 closed
1	1	pins 2 & 3 closed	pins 2 & 3 closed