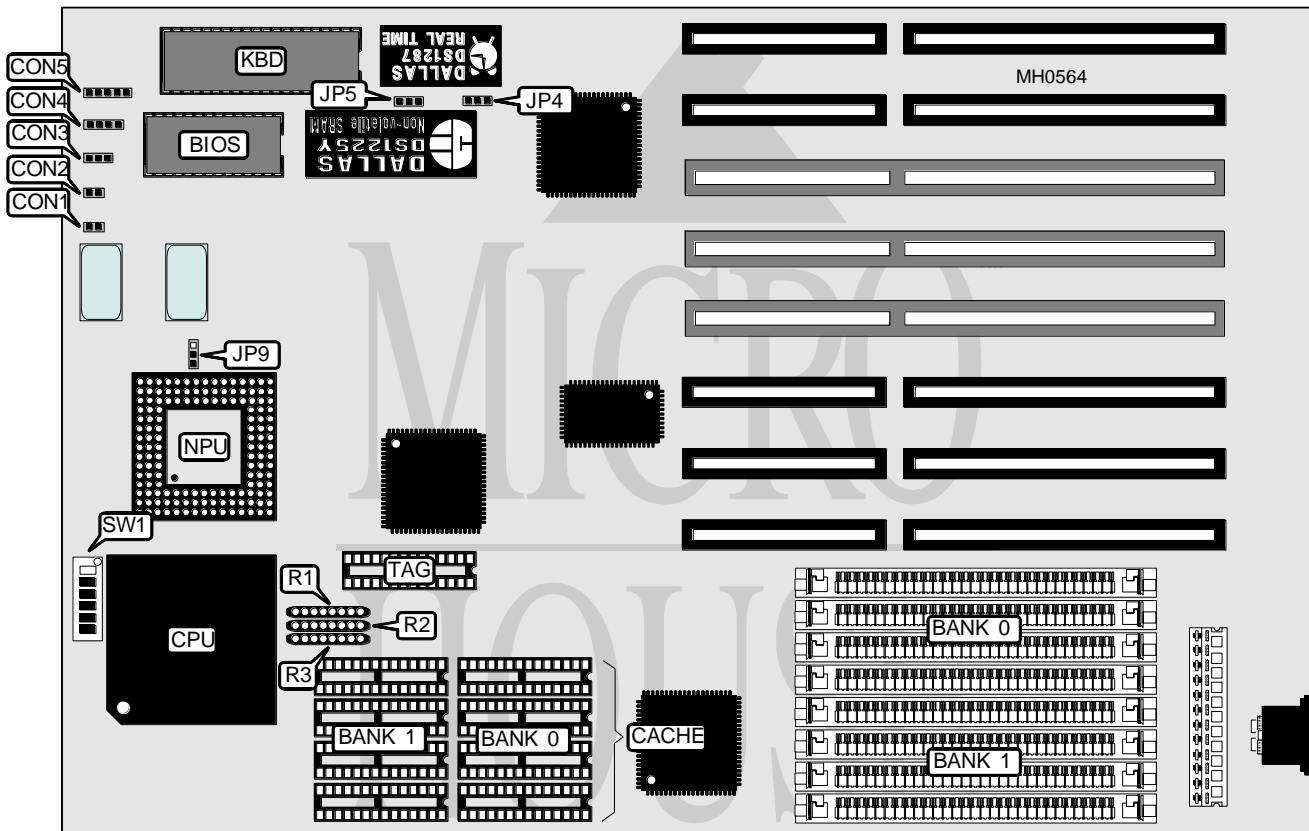


# ASUS COMPUTER INTERNATIONAL MINI EISA - 486AS

|                          |   |
|--------------------------|---|
| <b>Processor</b>         | 80486SX/80487SX/80486DX/ODP486SX/80486DX2   |
| <b>Processor Speed</b>   | 16/20/25/33/50(internal)/50/66(internal)MHz |
| <b>Chip Set</b>          | ASUS  |
| <b>Max. Onboard DRAM</b> | 128MB                                       |
| <b>Cache</b>             | 64/128/256KB                                |
| <b>BIOS</b>              | AMI   |
| <b>Dimensions</b>        | 330mm x 218mm                               |
| <b>I/O Options</b>       | None  |
| <b>NPU Options</b>       | 4167  |



| CONNECTIONS  |          |                     |          |
|--------------|----------|---------------------|----------|
| Purpose      | Location | Purpose             | Location |
| Reset switch | CON1     | Speaker             | CON4     |
| Turbo switch | CON2     | Power LED & keylock | CON5     |
| Turbo LED    | CON3     |                     |          |

Continued on next page . . .

# ASUS COMPUTER INTERNATIONAL

## MINI EISA - 486AS

... continued from previous page

| USER CONFIGURABLE SETTINGS                   |        |                   |
|--|--------|-------------------|
| Function                                     | Jumper | Position          |
| í Power good signal detect from power supply | JP1    | pins 1 & 2 closed |
| Power good signal detect from board          | JP1    | pins 2 & 3 closed |
| í Factory configured - do not alter          | JP4    | pins 1 & 2 closed |
| í Factory configured - do not alter          | JP5    | pins 1 & 2 closed |
| í CPU clock speed select ≤ 33MHz (external)  | JP9    | pins 1 & 2 closed |
| CPU clock speed select 50MHz (external)      | JP9    | pins 2 & 3 closed |

| DRAM CONFIGURATION |              |              |
|--------------------|--------------|--------------|
| Size               | Bank 0       | Bank 1       |
| 1MB                | (4) 256K x 9 | NONE         |
| 2MB                | (4) 256K x 9 | (4) 256K x 9 |
| 4MB                | (4) 1M x 9   | NONE         |
| 8MB                | (4) 1M x 9   | (4) 1M x 9   |
| 16MB               | (4) 4M x 9   | NONE         |
| 20MB               | (4) 1M x 9   | (4) 4M x 9   |
| 32MB               | (4) 4M x 9   | (4) 4M x 9   |
| 64MB               | (4) 16M x 9  | NONE         |
| 128MB              | (4) 16M x 9  | (4) 16M x 9  |

| CACHE CONFIGURATION |             |             |             |
|---------------------|-------------|-------------|-------------|
| Size                | Bank 0      | Bank 1      | TAG         |
| 64KB                | (4) 8K x 8  | (4) 8K x 8  | (1) 8K x 8  |
| 128KB               | (4) 32K x 8 | NONE        | (1) 8K x 8  |
| 256KB               | (4) 32K x 8 | (4) 32K x 8 | (1) 32K x 8 |

| CACHE RESISTOR CONFIGURATION |               |               |               |
|------------------------------|---------------|---------------|---------------|
| Size                         | R1            | R2            | R3            |
| 64KB                         | Installed     | Not installed | Not installed |
| 128KB                        | Not installed | Installed     | Not installed |
| 256KB                        | Not installed | Not installed | Installed     |

| CPU TYPE CONFIGURATION |       |       |       |       |       |       |
|------------------------|-------|-------|-------|-------|-------|-------|
| Type                   | SW1/1 | SW1/2 | SW1/3 | SW1/4 | SW1/5 | SW1/6 |
| 80486SX                | Off   | Off   | Off   | Off   | On    | On    |
| 80487SX                | Off   | On    | On    | On    | Off   | On    |
| 80486DX                | On    | On    | On    | Off   | Off   | On    |
| 80486DX2               | On    | On    | On    | Off   | Off   | On    |