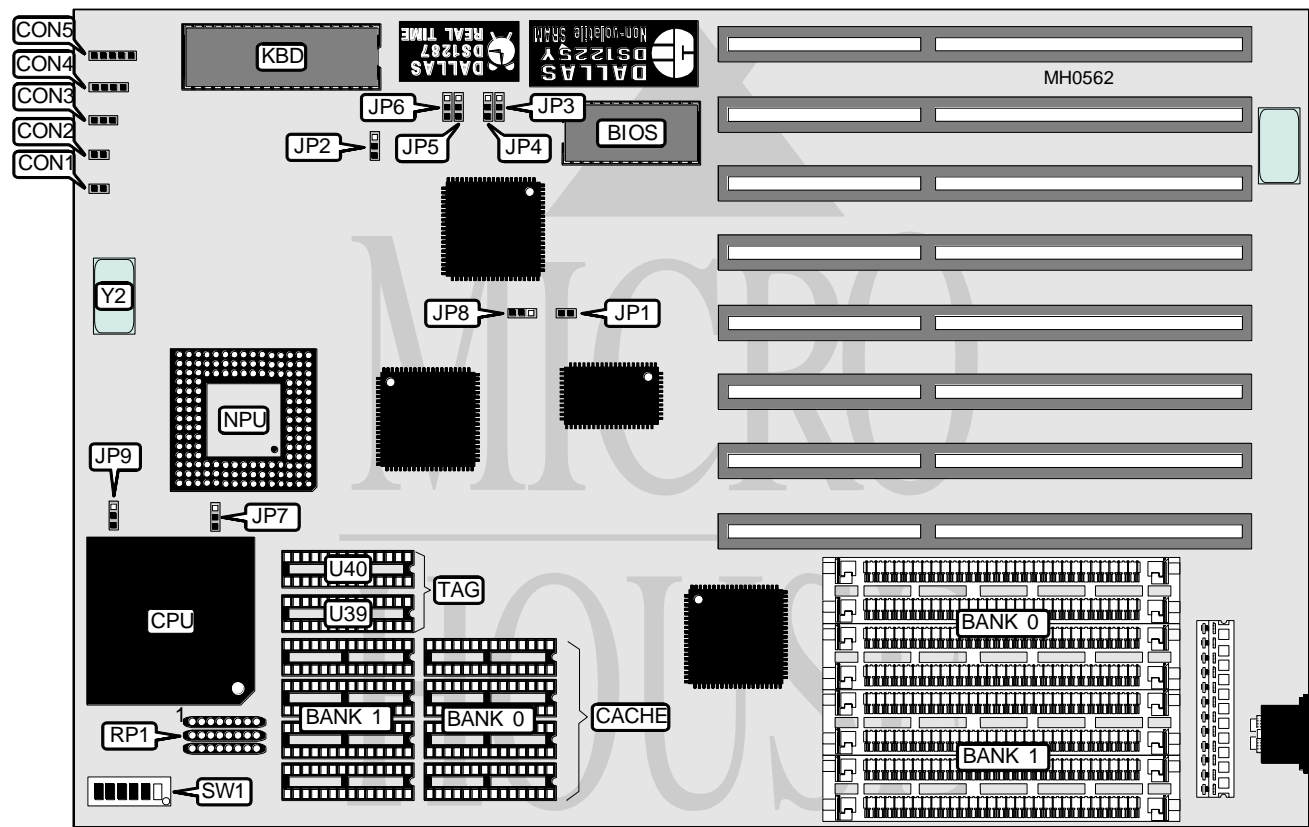


# ASUS COMPUTER INTERNATIONAL

## EISA - 486SI

Processor	80486SX/80487SX/80486DX/ODP486SX/80486DX2
Processor Speed	20/25/33/50/66(internal)MHz
Chip Set	SIS
Max. Onboard DRAM	128MB
Cache	64/128/256KB
BIOS	Award
Dimensions	330mm x 218mm
I/O Options	None
NPU Options	4167



CONNECTIONS			
Purpose	Location	Purpose	Location
Reset switch	CON1	Speaker	CON4
Turbo switch	CON2	Power LED & keylock	CON5
Turbo LED	CON3		

Continued on next page . . .

# ASUS COMPUTER INTERNATIONAL

## EISA-486SI

... continued from previous page

USER CONFIGURABLE SETTINGS		
Function	Jumper	Position
í Factory configured - do not alter	JP1	Closed
í Factory configured - do not alter	JP2	pins 1 & 2 closed
í Factory configured - do not alter	JP3	pins 2 & 3 closed
í Factory configured - do not alter	JP4	pins 2 & 3 closed
í Factory configured - do not alter	JP5	pins 2 & 3 closed
í Factory configured - do not alter	JP6	pins 1 & 2 closed
í Factory configured - do not alter	JP7	pins 2 & 3 closed
í Factory configured - do not alter	JP8	pins 2 & 3 closed
í CPU speed select ≤ 33MHz (internal)	JP9	pins 1 & 2 closed
CPU speed select 50MHz (internal)	JP9	pins 2 & 3 closed
Note: Jumpers JP1 - JP8 are absent from revisions 1.2 and later.		

DRAM CONFIGURATION		
Size	Bank 0	Bank 1
1MB	(4) 256K x 9	NONE
2MB	(4) 256K x 9	(4) 256K x 9
4MB	(4) 1M x 9	NONE
8MB	(4) 1M x 9	(4) 1M x 9
16MB	(4) 4M x 9	NONE
20MB	(4) 1M x 9	(4) 4M x 9
32MB	(4) 4M x 9	(4) 4M x 9
64MB	(4) 16M x 9	NONE
128MB	(4) 16M x 9	(4) 16M x 9

CACHE CONFIGURATION				
Size	Bank 0	Bank 1	TAG (U39)	TAG (U40)
64KB	(4) 8K x 8	(4) 8K x 8	(1) 8K x 8	NONE
128KB	(4) 32K x 8	NONE	(1) 8K x 8	NONE
256KB	(4) 32K x 8	(4) 32K x 8	(1) 8K x 8	(1) 8K x 8

CACHE RESISTOR CONFIGURATION			
Size	RP1/row 1	RP1/row 2	RP1/row 3
64KB	Installed	Not installed	Not installed
128KB	Not installed	Installed	Not installed
256KB	Not installed	Not installed	Installed

CPU TYPE CONFIGURATION						
Type	SW1/1	SW1/2	SW1/3	SW1/4	SW1/5	SW1/6
80486SX	Off	Off	Off	Off	On	On
80487SX	Off	On	On	On	Off	On
80486DX	On	On	On	Off	Off	On
80486DX2	On	On	On	Off	Off	On