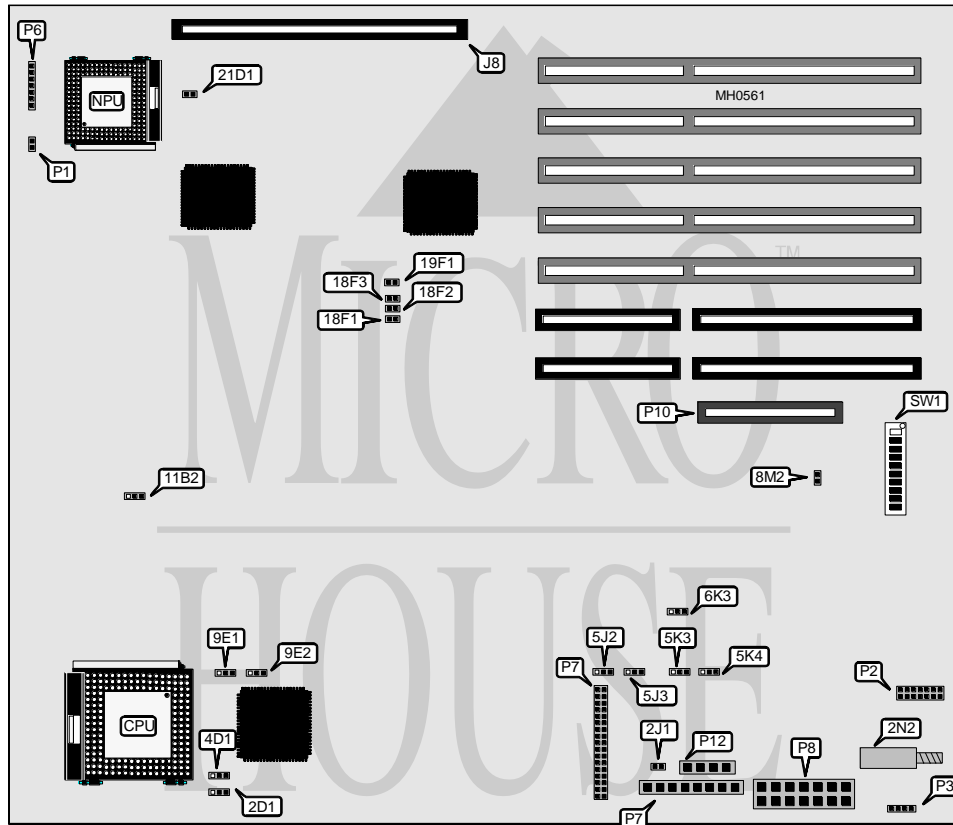


NEC TECHNOLOGIES, INC.

BUSINESSMATE 486/25E

Processor	80486DX
Processor Speed	25MHz
Chip Set	Intel
Max. Onboard DRAM	16MB (on system memory card)
Cache	None
BIOS	NEC (flash EEPROM)
Dimensions	330mm x 218mm
I/O Options	Proprietary serial/parallel card, keyboard/Bus mouse interface, floppy drive interface, proprietary system memory bus
NPU Options	80387/3167



CONNECTIONS			
Purpose	Location	Purpose	Location
Proprietary system memory bus	J8	Floppy drive interface	P7
Speaker	P1	Power supply	P8
Keyboard/Bus mouse interface	P2	Drive power supply	P9
External battery	P3	Proprietary serial/parallel card	P10
Power LED & Turbo LED	P6	Auxiliary drive power supply	P12
Note: Either a proprietary system memory card or a proprietary memory bus expansion card may be installed at J8. The proprietary memory bus expansion card has four slots that may be populated by up to four 2MB expansion cards.			

Continued on next page . . .

NEC TECHNOLOGIES, INC.

BUSINESSMATE 486/25E

... continued from previous page

USER CONFIGURABLE SETTINGS		
Function	Jumper/Switch	Position
í RDY signal from DODA select DMY RDY	11B2	pins 1 & 2 closed
RDY signal from DODA select BRDY	11B2	pins 2 & 3 closed
í Factory configured - do not alter	18F1	Open
í EISA memory write speed select 0 wait states	18F2	Closed
EISA memory write speed select 1 wait state	18F2	Open
í CPU self-test enabled	21D1 & 4D1	pins 1 & 2 closed
CPU self-test enabled	21D1 & 4D1	pins 2 & 3 closed
í Floppy interface transfer rate 500/300/250/150/125KB	2D1	pins 1 & 2 closed
Floppy interface transfer rate 500/300/250/150KB	2D1	pins 2 & 3 closed
í Reset enabled	2J1	Open
Reset disabled	2J1	Closed
í Test mode disabled	2N2	Open
Test mode enabled	2N2	Closed
í Password enabled	5J2	pins 1 & 2 closed
Password disabled	5J2	pins 2 & 3 closed
í A20 gate output select keyboard controller	5J3	pins 1 & 2 closed
A20 gate output select PAL (Novell workaround)	5J3	pins 2 & 3 closed
í Keyboard controller W/R select PAL (Novell workaround)	5K3	pins 1 & 2 closed
Keyboard controller W/R select normal XIOWT	5K3	pins 2 & 3 closed
í Keyboard controller input select 12HMz	5K4	pins 1 & 2 closed
Keyboard controller input select 8.33HMz	5K4	pins 2 & 3 closed
í STBY signal for RTC select PWREN -0	6K3	pins 1 & 2 closed
STBY signal for RTC select PWREN +0	6K3	pins 2 & 3 closed
í ROM test mode (looping) disabled	8M2	Open
ROM test mode (looping) enabled	8M2	Closed
í Factory configured - do not alter	9E1	pins 2 & 3 closed
í Factory configured - do not alter	9E2	pins 2 & 3 closed
í Monitor type select color	SW1/1	On
Monitor type select monochrome	SW1/1	Off
í Floppy drive interface address select primary (drive A)	SW1/2	Off
Floppy drive interface address select secondary (drive B)	SW1/2	On
í Floppy drive interface enabled	SW1/3	On
Floppy drive interface disabled	SW1/3	Off

Continued on next page...

NEC TECHNOLOGIES, INC.
BUSINESSMATE 486/25E

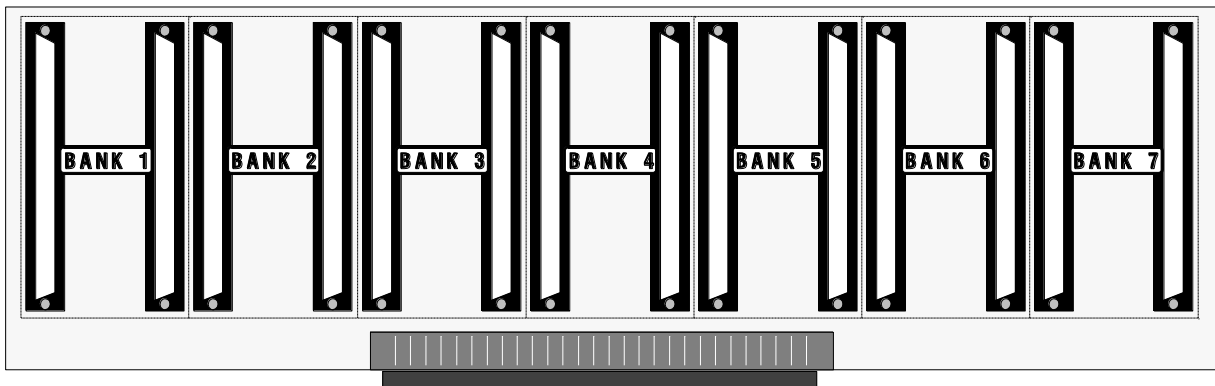
... continued from previous page

USER CONFIGURABLE SETTINGS (CON'T)		
Function	Switch	Position
í Serial port (COM2) enabled	SW1/4	On
Serial port (COM2) disabled	SW1/4	Off
í Serial port (COM1) enabled	SW1/5	On
Serial port (COM1) disabled	SW1/5	Off
í Parallel port enabled	SW1/6	On
Parallel port disabled	SW1/6	Off
í NPU enabled	SW1/7	On
NPU disabled	SW1/7	Off
í Bus mouse enabled	SW1/8	On
Bus mouse disabled	SW1/8	Off
í Base memory size select 640KB	SW1/9	On
Base memory size select 512KB	SW1/9	Off
í Factory configured - do not alter	SW1/10	Off

Notes: Serial parallel port are located on the proprietary serial/parallel card.

MEMORY READ SPEED CONFIGURATION			
Wait states	18F3	19F1	
0	Closed	Closed	
1	Open	Closed	
2	Closed	Open	
3	Open	Open	

SYSTEM MEMORY CARD (G8FHW)



Continued on next page ...

NEC TECHNOLOGIES, INC.
BUSINESSMATE 486/25E

... continued from previous page

DRAM CONFIGURATION								
Size	Bank 0	Bank 1	Bank 2	Bank 3	Bank 4	Bank 5	Bank 6	Bank 7
2MB	2MB	NONE	NONE	NONE	NONE	NONE	NONE	NONE
4MB	2MB	2MB	NONE	NONE	NONE	NONE	NONE	NONE
6MB	2MB	2MB	2MB	NONE	NONE	NONE	NONE	NONE
8MB	2MB	2MB	2MB	2MB	NONE	NONE	NONE	NONE
10MB	2MB	2MB	2MB	2MB	2MB	NONE	NONE	NONE
12MB	2MB	2MB	2MB	2MB	2MB	2MB	NONE	NONE
14MB	2MB	2MB	2MB	2MB	2MB	2MB	2MB	NONE
16MB	2MB	2MB	2MB	2MB	2MB	2MB	2MB	2MB

Note: Location of Bank 0 is unidentified. Banks are filled with proprietary 2MB memory modules (NEC part# 13-260131-502-A). Either a proprietary system memory card or a proprietary memory bus expansion card may be installed at J8. The proprietary memory bus expansion card has four slots that may be populated by up to four 2MB expansion cards.