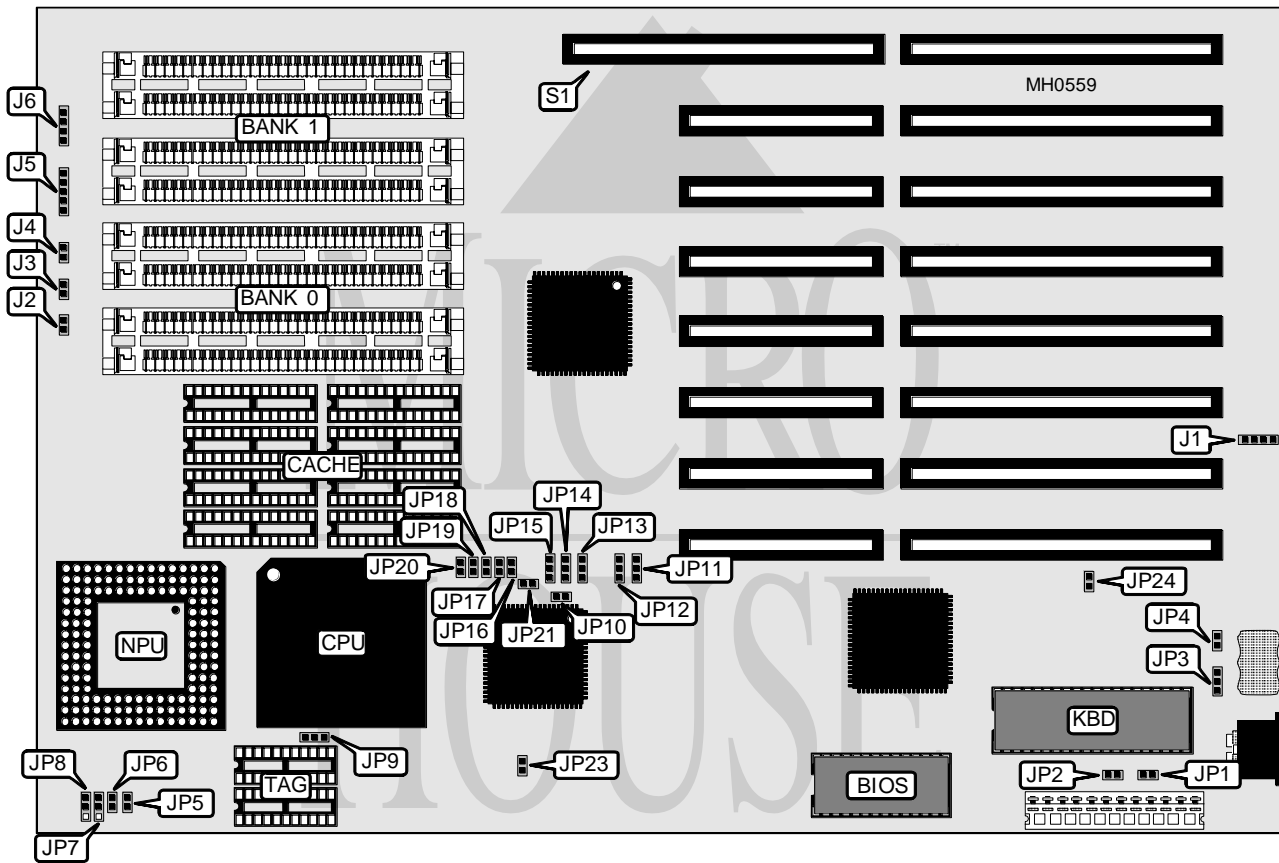


J-MARK COMPUTER CORPORATION

JET-486 CACHE 486-33/486SX-25

Processor	80486SX/80486DX
Processor Speed	25/33MHz
Chip Set	ETEQ
Max. Onboard DRAM	32MB
Cache	64/256KB
BIOS	AMI
Dimensions	330mm x 220mm
I/O Options	32-bit external memory card slot
NPU Options	80487SX/4167



CONNECTIONS			
Purpose	Location	Purpose	Location
External battery	J1	Power LED & keylock	J5
Reset switch	J2	Speaker	J6
Turbo switch	J3	32-bit external memory card	S1
Turbo LED	J4		

Continued on next page . . .

J-MARK COMPUTER CORPORATION

JET-486 CACHE 486-33/486SX-25

... continued from previous page

USER CONFIGURABLE SETTINGS		
Function	Jumper	Position
í Factory configured - do not alter	JP1	N/A
í Monitor type select monochrome	JP2	Open
Monitor type select color	JP2	Closed
í CMOS memory normal operation	JP3	Closed
CMOS memory clear	JP3	Open
í Factory configured - do not alter	JP4	N/A
í Factory configured - do not alter	JP11	N/A
í Factory configured - do not alter	JP12	N/A
í Factory configured - do not alter	JP13	N/A
í Factory configured - do not alter	JP14	N/A
í Factory configured - do not alter	JP21	N/A
í Factory configured - do not alter	JP23	N/A
í Factory configured - do not alter	JP24	N/A

DRAM CONFIGURATION		
Size	Bank 0	Bank 1
1MB	(4) 256K x 9	NONE
2MB	(4) 256K x 9	(4) 256K x 9
4MB	(4) 1M x 9	NONE
5MB	(4) 256K x 9	(4) 1 M x 9
8MB	(4) 1M x 9	(4) 1M x 9
16MB	(4) 4M x 9	NONE
32MB	(4) 4M x 9	(4) 4M x 9

CACHE CONFIGURATION			
Size	Bank 0	TAG (U22)	TAG (U23)
64KB	(8) 8K x 8	(1) 16K x 4	NONE
256KB	(8) 32K x 8	(1) 16K x 4	(1) 16K x 4

CACHE JUMPER CONFIGURATION					
Size	JP5	JP6	JP7	JP8	JP22
64KB	Open	Open	2 & 3	2 & 3	Open
256KB	Closed	Closed	1 & 2	1 & 2	Closed

Note: Pins designated should be in the closed position.

CPU TYPE CONFIGURATION				
Type	JP9	JP10	JP15	JP16
80486SX	pins 1 & 2 closed	Closed	pins 1 & 2 closed	Open
80486SX + 80487SX	pins 1 & 2 closed	Closed	pins 1 & 2 closed	Open
80486DX	pins 1 & 2 closed	Closed	pins 2 & 3 closed	Closed

Continued on next page . . .

J-MARK COMPUTER CORPORATION**J E T - 4 8 6 C A C H E 4 8 6 - 3 3 / 4 8 6 S X - 2 5**

... continued from previous page

NPU JUMPER CONFIGURATION				
Type	JP17	JP18	JP19	JP20
80487SX	Open	Open	Open	Open
4167	Closed	Closed	Closed	Closed

Note: In order to use the Weitek 4167, a daughter board must be installed in the CPU socket. You would then insert the NPU and CPU into the daughter board.