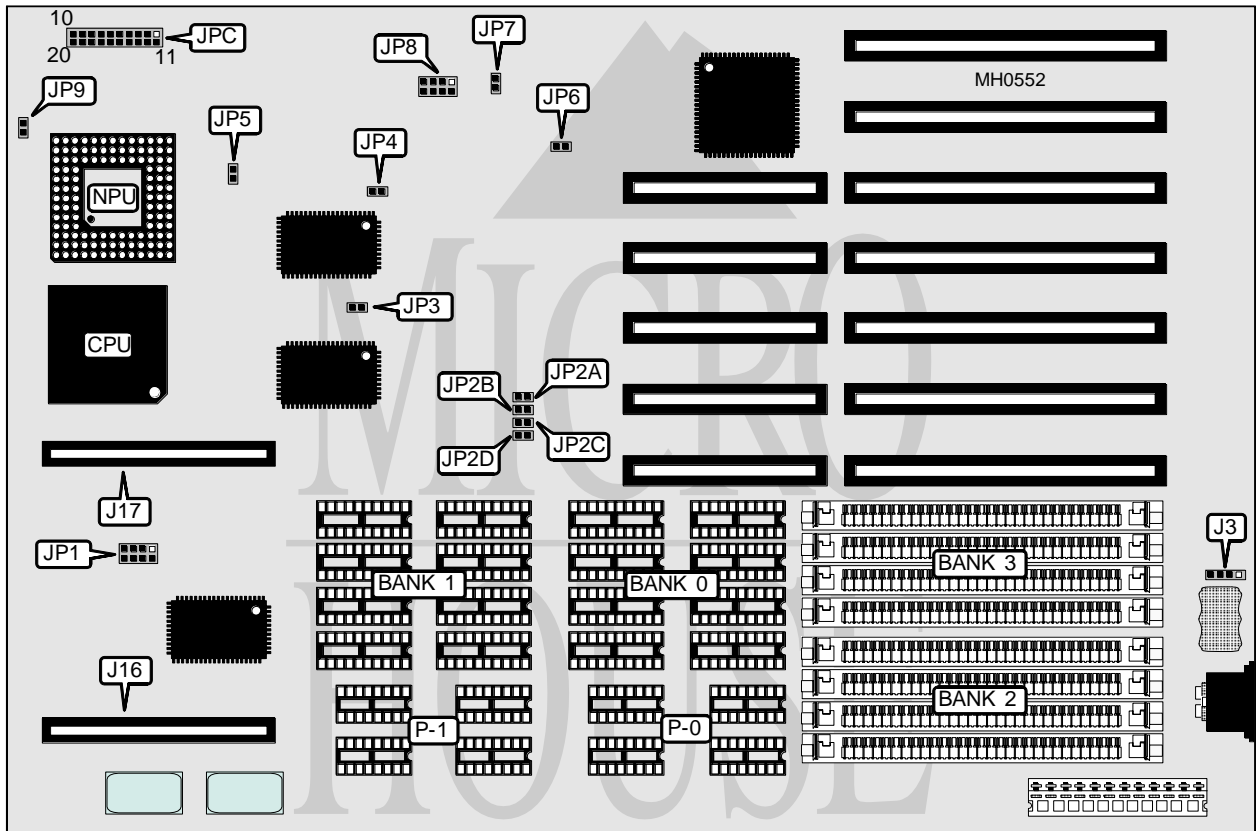


# UNIDENTIFIED

## SIS - 386

**Processor** 80386DX  
**Processor Speed** 25/33MHz  
**Chip Set** C & T  
**Max. Onboard DRAM** 8MB  
**Cache** 64KB (on external card)  
**BIOS** AMI  
**Dimensions** 330mm x 218mm  
**I/O Options** 32-bit external cache card slot  
**NPU Options** 80387/3167



CONNECTIONS			
Purpose	Location	Purpose	Location
External battery	J3	Turbo LED	JPC pins 12 & 13
32-bit external cache cards	J16 & J17	Turbo switch	JPC pins 15 - 17
Power LED & keylock	JPC pins 1 - 5	Reset switch	JPC pins 19 & 20
Speaker	JPC pins 7 - 10		

Continued on next page . . .

# UNIDENTIFIED

## SIS - 386

... continued from previous page

USER CONFIGURABLE SETTINGS		
Function	Jumper	Position
í Factory configured - do not alter	JP1	N/A
í Factory configured - do not alter	JP3	N/A
í Factory configured - do not alter	JP4	N/A
í Factory configured - do not alter	JP5	N/A
í Factory configured - do not alter	JP6	N/A
í Monitor type select monochrome	JP7	Open
Monitor type select color	JP7	Closed
í Factory configured - do not alter	JP8	N/A
í NPU mode select synchronous with CPU	JP9	Open
NPU mode select asynchronous with CPU	JP9	Closed

DRAM CONFIGURATION						
Size	Bank 0	P-0	Bank 1	P-1	Bank 2	Bank 3
1MB	(8) 44256	(4) 41256	NONE	NONE	NONE	NONE
1MB	NONE	NONE	NONE	NONE	(4) 256K x 9	NONE
2MB	(8) 44256	(4) 41256	(8) 44256	(4) 41256	NONE	NONE
2MB	NONE	NONE	NONE	NONE	(4) 256K x 9	(4) 256K x 9
4MB	NONE	NONE	NONE	NONE	(4) 1M x 9	NONE
8MB	NONE	NONE	NONE	NONE	(4) 1M x 9	(4) 1M x 9

CACHE JUMPER CONFIGURATION				
Size	JP2A	JP2B	JP2C	JP2D
64KB	Open	Open	Open	Open
128KB	Closed	Closed	Closed	Closed