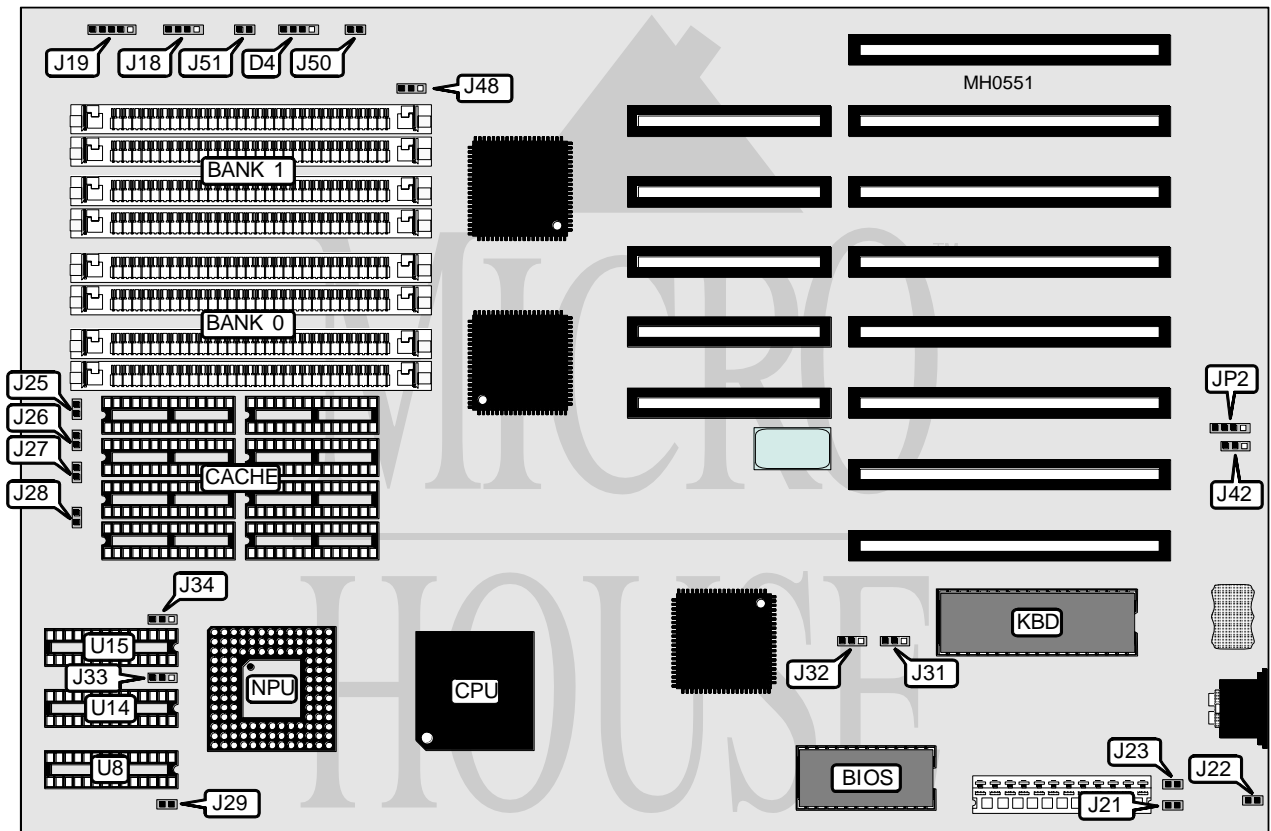


BIOSTAR MICROTECH INTERNATIONAL CORPORATION

MB-1333C-CH/1340C-CH (B)

Processor 80386DX
Processor Speed 33/40MHz
Chip Set C & T
Max. Onboard DRAM 32MB
Cache 256KB
BIOS C & T
Dimensions 330mm x 218mm
I/O Options None
NPU Options 80387/3167



CONNECTIONS			
Purpose	Location	Purpose	Location
External battery	JP2	Power LED & keylock	J19
Turbo LED	D4	Turbo switch	J50
Speaker	J18	Reset switch	J51

Continued on next page . . .

BIOSTAR MICROTECH INTERNATIONAL CORPORATION

MB-1333C-CH/1340C-CH (B)

... continued from previous page

USER CONFIGURABLE SETTINGS		
Function	Jumper	Position
í Factory configured - do not alter	J21	Open
í Fast gate A20 enabled	J22	Closed
Fast gate A20 disabled	J22	Open
í Monitor type select color	J23	Closed
Monitor type select monochrome	J23	Open
í CMOS memory normal operation	J42	pins 2 & 3 closed
CMOS memory clear	J42	pins 1 & 2 closed

DRAM CONFIGURATION		
Size	Bank 0	Bank 1
1MB	(4) 256K x 9	NONE
2MB	(4) 256K x 9	(4) 256K x 9
4MB	(4) 1M x 9	NONE
5MB	(4) 256K x 9	(4) 1 M x 9
8MB	(4) 1M x 9	(4) 1M x 9
16MB	(4) 4M x 9	NONE
17MB	(4) 4M x 9	(4) 256K x 9
20MB	(4) 4M x 9	(4) 1M x 9
32MB	(4) 4M x 9	(4) 4M x 9

DRAM JUMPER CONFIGURATION	
Size	J48
1MB	pins 2 & 3 closed
2MB	pins 2 & 3 closed
4MB	pins 2 & 3 closed
5MB	pins 1 & 2 closed
8MB	pins 2 & 3 closed
16MB	pins 2 & 3 closed
17MB	pins 1 & 2 closed
20MB	pins 1 & 2 closed
32MB	pins 2 & 3 closed

CACHE CONFIGURATION			
Size	Bank 0	TAG	TAG location
64KB	(8) 16K x 4	(2) 16K x 4	U14 & U15
256KB	(8) 64K x 4	(3) 64K x 4	U8 & U14 & U15

CACHE JUMPER CONFIGURATION							
Size	J25	J26	J27	J28	J29	J33	J34
64KB	Closed	Closed	Closed	Closed	Closed	1 & 2	1 & 2
256KB	Open	Open	Open	Open	Open	2 & 3	2 & 3

Note: Pins designated should be in the closed position.

Continued on next page ...

BIOSTAR MICROTECH INTERNATIONAL CORPORATION
MB-1333C-CH/1340C-CH (B)*... continued from previous page*

POWER GOOD CONFIGURATION		
Setting	J31	J32
Signal detect from power supply	pins 2 & 3 closed	pins 2 & 3 closed
Signal detect from board	pins 1 & 2 closed	pins 1 & 2 closed