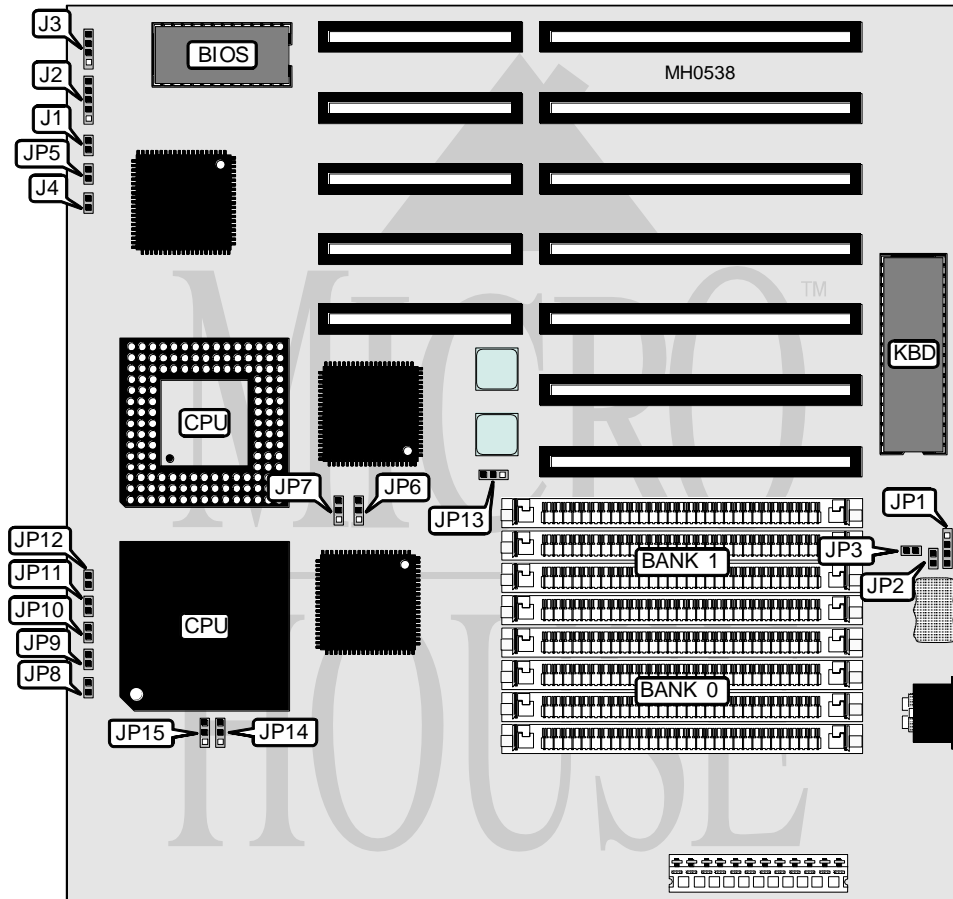


J-MARK COMPUTER CORPORATION

JET-486DX/SX 20/25 NON-CACHE

Processor	80486SX/80486DX
Processor Speed	20/25/33MHz
Chip Set	ETEQ
Max. Onboard DRAM	32MB
Cache	None
BIOS	AMI
Dimensions	220mm x 220mm
I/O Options	None
NPU Options	80487SX



CONNECTIONS			
Purpose	Location	Purpose	Location
Reset switch	J1	Turbo switch	J4
Power LED & keylock	J2	External battery	JP1
Speaker	J3	Turbo LED	JP5

Continued on next page . . .

J-MARK COMPUTER CORPORATION

JET-486DX/SX 20/25 NON-CACHE

... continued from previous page

USER CONFIGURABLE SETTINGS

Function	Jumper	Position
í Monitor type select color	JP2	Closed
Monitor type select monochrome	JP2	Open
í CMOS memory normal operation	JP3	Closed
CMOS memory clear	JP3	Open
í Factory configured - do not alter	JP12	Closed
í Oscillator speed select 25MHz	JP13	pins 1 & 2 closed
Oscillator speed select 20MHz	JP13	pins 2 & 3 closed

DRAM CONFIGURATION

Size	Bank 0	Bank 1
1MB	(4) 256K x 9	NONE
2MB	(4) 256K x 9	(4) 256K x 9
4MB	(4) 1M x 9	NONE
5MB	(4) 256K x 9	(4) 1 M x 9
8MB	(4) 1M x 9	(4) 1M x 9
16MB	(4) 4M x 9	NONE
32MB	(4) 4M x 9	(4) 4M x 9

CPU TYPE CONFIGURATION

Type	JP8	JP9	JP10	JP11
80486SX	Open	Open	pins 1 & 2 closed	pins 1 & 2 closed
80487SX	Closed	Open	Open	pins 2 & 3 closed
80486DX	Closed	Closed	pins 2 & 3 closed	pins 1 & 2 closed

CHIPSET TYPE CONFIGURATION

Type	JP6	JP7	JP14	JP15
82C493	pins 1 & 2 closed	pins 2 & 3 closed	pins 2 & 3 closed	pins 1 & 2 closed
82C492	pins 2 & 3 closed	pins 1 & 2 closed	pins 1 & 2 closed	pins 2 & 3 closed