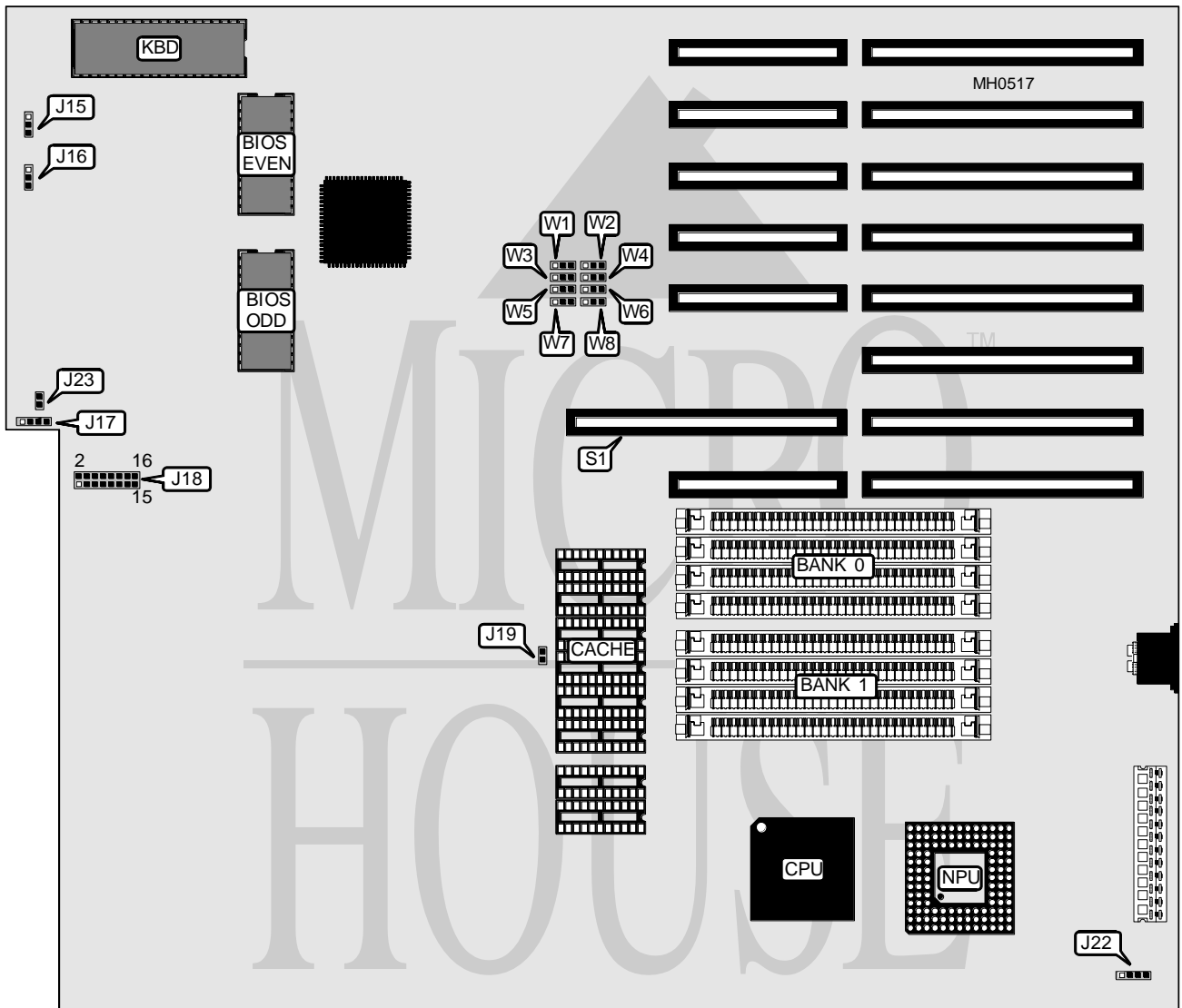


EVEREX SYSTEMS, INC.

SYSTEM 3900 (EV-1851)

Processor	80386DX
Processor Speed	25/33MHz
Chip Set	C & T
Max. Onboard DRAM	8MB
Cache	64KB
BIOS	AMI
Dimensions	355mm x 304mm
I/O Options	32-bit external memory card slot
NPU Options	80387/3167



Continued on next page . . .

EVEREX SYSTEMS, INC.
SYSTEM 3900 (EV-1851)

... continued from previous page

CONNECTIONS			
Purpose	Location	Purpose	Location
Speaker	J17	Keylock	J18 pin 9
Power LED	J18 pin 1	External battery connector	J22
Turbo LED	J18 pin 2	Speaker enable/disable switch	J23
Reset switch	J18 pin 6	32-bit external memory card	S1

USER CONFIGURABLE SETTINGS		
Function	Jumper	Position
í DRAM speed select 4 wait states	J15	pins 1 & 2 closed
DRAM speed select 3 wait states	J15	pins 2 & 3 closed
í NPU mode select 1 wait state	J16	pins 1 & 2 closed
NPU mode select 0 wait states	J16	pins 2 & 3 closed
í Factory configured - do not alter	J19	Open

DRAM CONFIGURATION				
Size	Bank 0	Bank 1	Bank 2	Bank 3
1MB	(4) 256K x 9	NONE	NONE	NONE
2MB	(4) 256K x 9	(4) 256K x 9	NONE	NONE
4MB	(4) 256K x 9	(4) 256K x 9	(4) 256K x 9	(4) 256K x 9
4MB	(4) 1M x 9	NONE	NONE	NONE
8MB	(4) 1M x 9	(4) 1M x 9	NONE	NONE
16MB	(4) 1M x 9	(4) 1M x 9	(4) 1M x 9	(4) 1M x 9

Note: Banks 2 & 3 are used when a 32-bit external memory card is installed.

CACHE CONFIGURATION	
Size	Bank 0
64KB	(8) 64K x 1

Note: Cache is factory installed and is not configurable.

CMOS CONFIGURATION								
Setting	W1	W2	W3	W4	W5	W6	W7	W8
Internal	2 & 3	2 & 3	2 & 3	2 & 3	2 & 3	2 & 3	2 & 3	2 & 3
External	1 & 2	1 & 2	1 & 2	1 & 2	1 & 2	1 & 2	1 & 2	1 & 2

Note: Pins designated should be in the closed position.