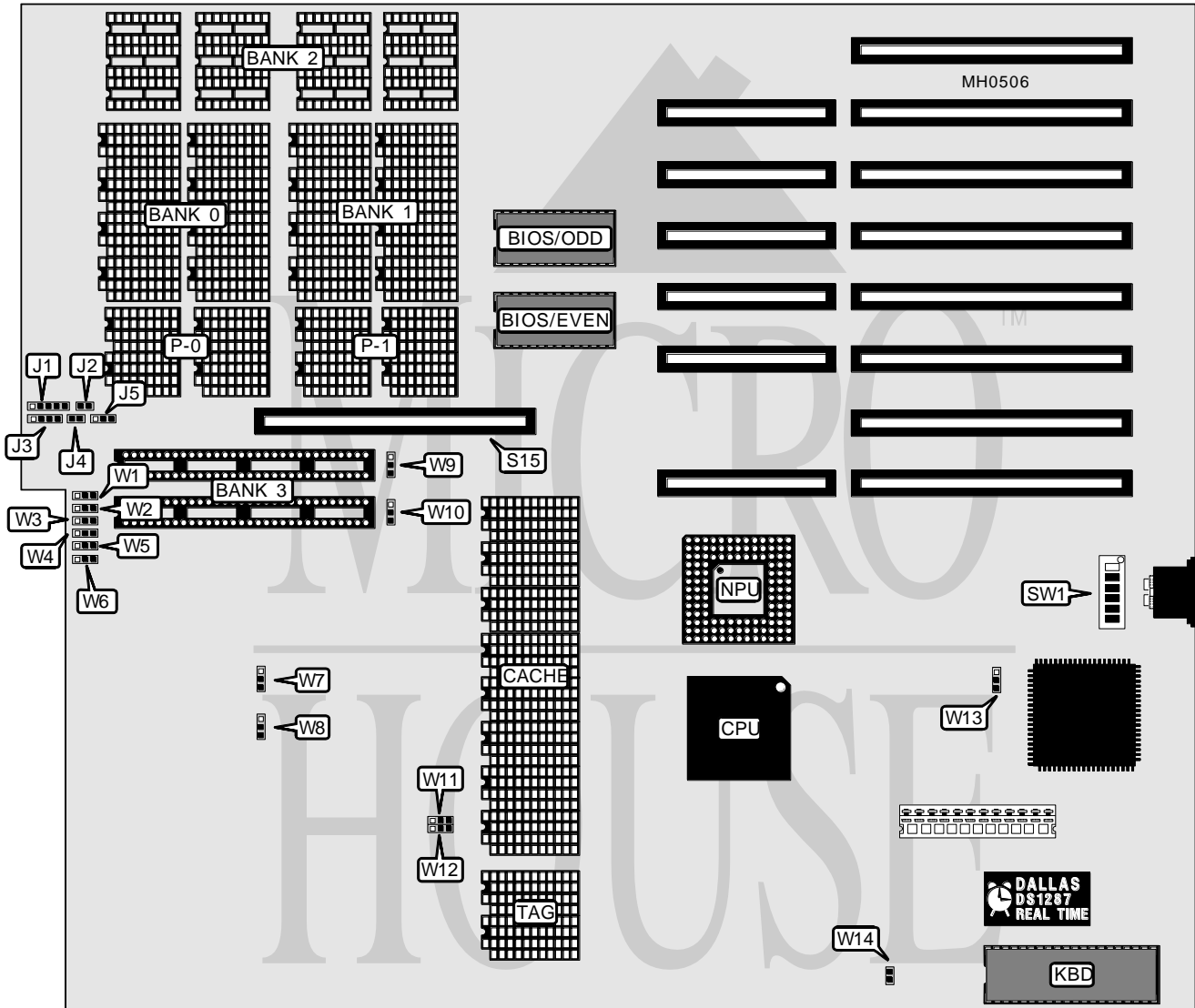


DTK COMPUTER, INC.

P E M - 2 5 0 0

Processor 80386DX
Processor Speed 25MHz
Chip Set VLSI
Max. Onboard DRAM 16MB (8MB on external memory card)
Cache 64/256KB
BIOS AMI/Award/DTK/Phoenix
Dimensions 351mm x 306mm
I/O Options 32-bit external memory card slot
NPU Options 80387/3167



CONNECTIONS			
Purpose	Location	Purpose	Location
Power LED & keylock	J1	Turbo LED	J4
Reset switch	J2	Turbo switch	J5
Speaker	J3	32-bit external memory card	S15

Continued on next page . . .

DTK COMPUTER, INC.

P E M - 2 5 0 0

... continued from previous page

USER CONFIGURABLE SETTINGS		
Function	Jumper/Switch	Position
í Expansion bus (8-bit) speed select 7 wait states	W11	pins 1 & 2 closed
Expansion bus (8-bit) speed select 5 wait states	W11	pins 2 & 3 closed
í Expansion bus (16-bit) speed select 3 wait states	W12	pins 1 & 2 closed
Expansion bus (16-bit) speed select 1 wait states	W12	pins 2 & 3 closed
í DMA & I/O speed select 6/12MHz respectively	W13	pins 1 & 2 closed
DMA & I/O speed select 3/6MHz respectively	W13	pins 2 & 3 closed
í NPU disabled	W14	Closed
NPU enabled	W14	Open
í Monitor type select monochrome	SW1/6	Off
Monitor type select color	SW1/6	On

DRAM CONFIGURATION						
Size	Bank 0	P-0	Bank 1	P-1	Bank 2	Bank 3
1MB	(8) 44256	(4) 41256	NONE	NONE	NONE	NONE
1MB	NONE	NONE	NONE	NONE	NONE	(4) 256K x 9
2MB	(8) 44256	(4) 41256	(8) 44256	(4) 41256	NONE	NONE
2MB	(8) 44256	(4) 41256	NONE	NONE	NONE	(4) 256K x 9
2MB	NONE	NONE	(8) 44256	(4) 41256	NONE	(4) 256K x 9
4MB	(8) 411000	(4) 411000	(8) 411000	(4) 411000	(12) 411000	NONE
4MB	NONE	NONE	NONE	NONE	NONE	(4) 1M x 9
5MB	(8) 44256	(4) 41256	NONE	NONE	NONE	(4) 1M x 9
8MB	(8) 411000	(4) 411000	(8) 411000	(4) 411000	(12) 411000	(4) 1M x 9

DRAM JUMPER CONFIGURATION								
Size	W1	W2	W3	W4	W5	W6	W7	W8
1MB	2 & 3	2 & 3	2 & 3	2 & 3	2 & 3	2 & 3	2 & 3	2 & 3
1MB	1 & 2	1 & 2	1 & 2	1 & 2	1 & 2	1 & 2	2 & 3	2 & 3
2MB	2 & 3	2 & 3	2 & 3	2 & 3	2 & 3	2 & 3	2 & 3	2 & 3
4MB	2 & 3	2 & 3	2 & 3	2 & 3	2 & 3	2 & 3	1 & 2	1 & 2
4MB	1 & 2	1 & 2	1 & 2	1 & 2	1 & 2	1 & 2	1 & 2	1 & 2
5MB	2 & 3	2 & 3	2 & 3	2 & 3	2 & 3	2 & 3	2 & 3	1 & 2
8MB	2 & 3	2 & 3	2 & 3	2 & 3	2 & 3	2 & 3	1 & 2	1 & 2

Note: Pins designated should be in the closed position.

DRAM SWITCH CONFIGURATION					
Size	SW1/1	SW1/2	SW1/3	SW1/4	SW1/5
1MB	On	On	On	On	On
1MB	On	On	On	On	On
2MB	On	On	On	On	On
4MB	On	On	Off	On	Off
4MB	On	On	Off	On	Off
5MB	Off	On	On	Off	On
8MB	Off	On	Off	Off	Off

Continued on next page . . .

DTK COMPUTER, INC.**P E M - 2 5 0 0**

... continued from previous page

CACHE CONFIGURATION		
Size	Bank 0	TAG
64KB	(8) 16K x 4	(2) 16K x 4
256KB	(8) 64K x 4	(2) 64K x 4

CACHE JUMPER CONFIGURATION		
Size	W9	W10
64KB	pins 1 & 2 closed	pins 1 & 2 closed
256KB	pins 2 & 3 closed	pins 2 & 3 closed