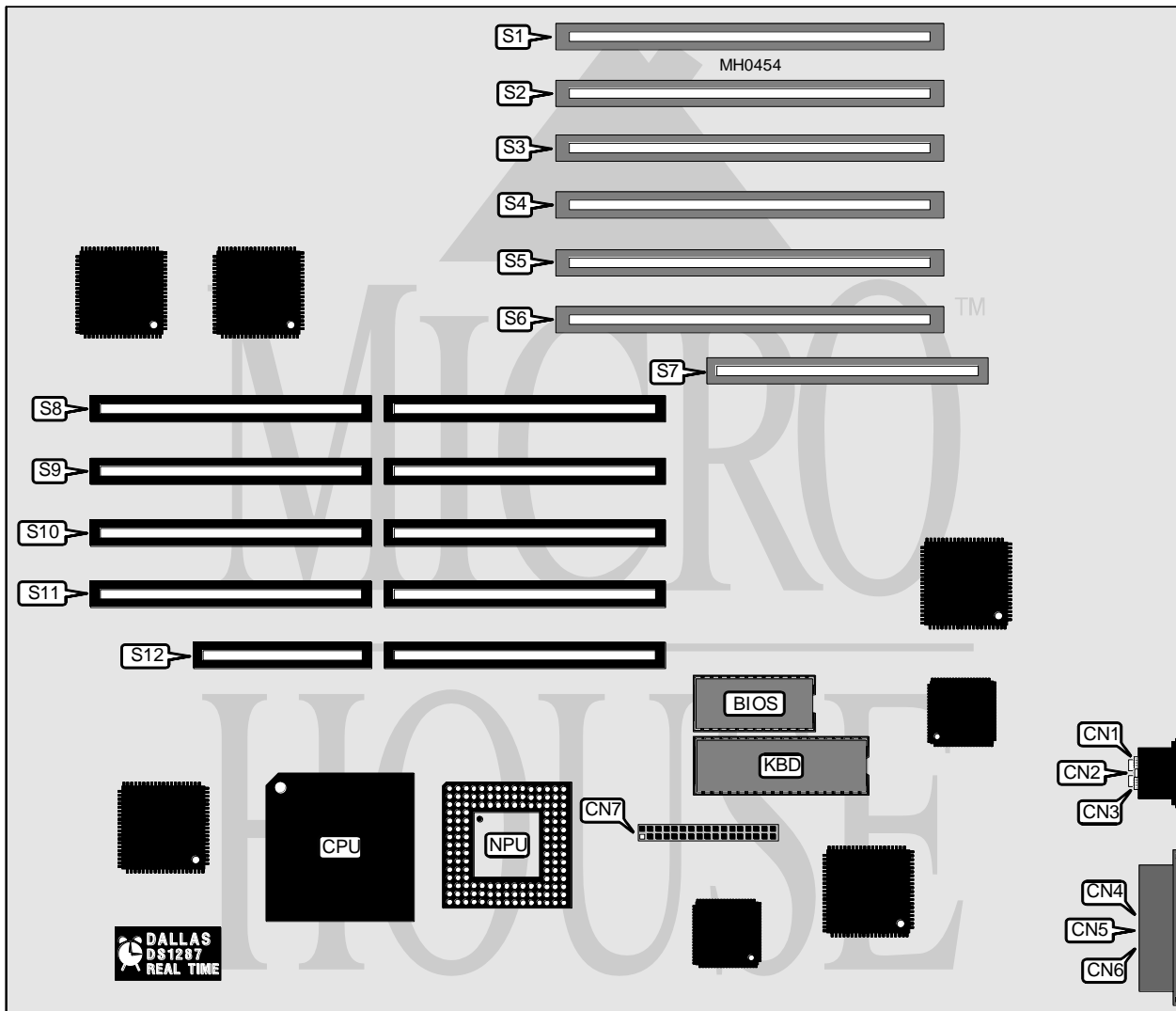


# NCR CORPORATION

## CLASS 3434

<b>Processor</b>	80486DX
<b>Processor Speed</b>	33MHz
<b>Chip Set</b>	NCR
<b>Max. Onboard DRAM</b>	None
<b>Cache</b>	None
<b>BIOS</b>	AMI
<b>Dimensions</b>	355mm x 304mm
<b>I/O Options</b>	Serial ports (2), parallel port, PS/2 mouse port, VGA port, SCSI host adapter slot, floppy drive interface, 32-bit external memory card slots (4)
<b>NPU Options</b>	4167



Continued on next page . . .

# NCR CORPORATION

## CLASS 3434

... continued from previous page

CONNECTIONS			
Purpose	Location	Purpose	Location
Video port	CN1	Parallel port	CN6
Keyboard port	CN2	Floppy drive interface	CN7
PS/2 mouse port	CN3	MCA slot	S1 - S7
Serial port 2	CN4	32-bit external memory card	S8 - S11
Serial port 1	CN5	SCSI host adapter slot	S12

DRAM CONFIGURATION				
Size	Bank 0	Bank 1	Bank 3	Bank 4
4MB	(36) 44256	NONE	NONE	NONE
16MB	(36) 441000	NONE	NONE	NONE
20MB	(36) 441000	(36) 44256	NONE	NONE
32MB	(36) 441000	(36) 441000	NONE	NONE
36MB	(36) 441000	(36) 441000	(36) 44256	NONE
48MB	(36) 441000	(36) 441000	(36) 441000	NONE
52MB	(36) 441000	(36) 441000	(36) 441000	(36) 44256
64MB	(36) 441000	(36) 441000	(36) 441000	(36) 441000
Note: Each bank consists of one proprietary external memory card.				