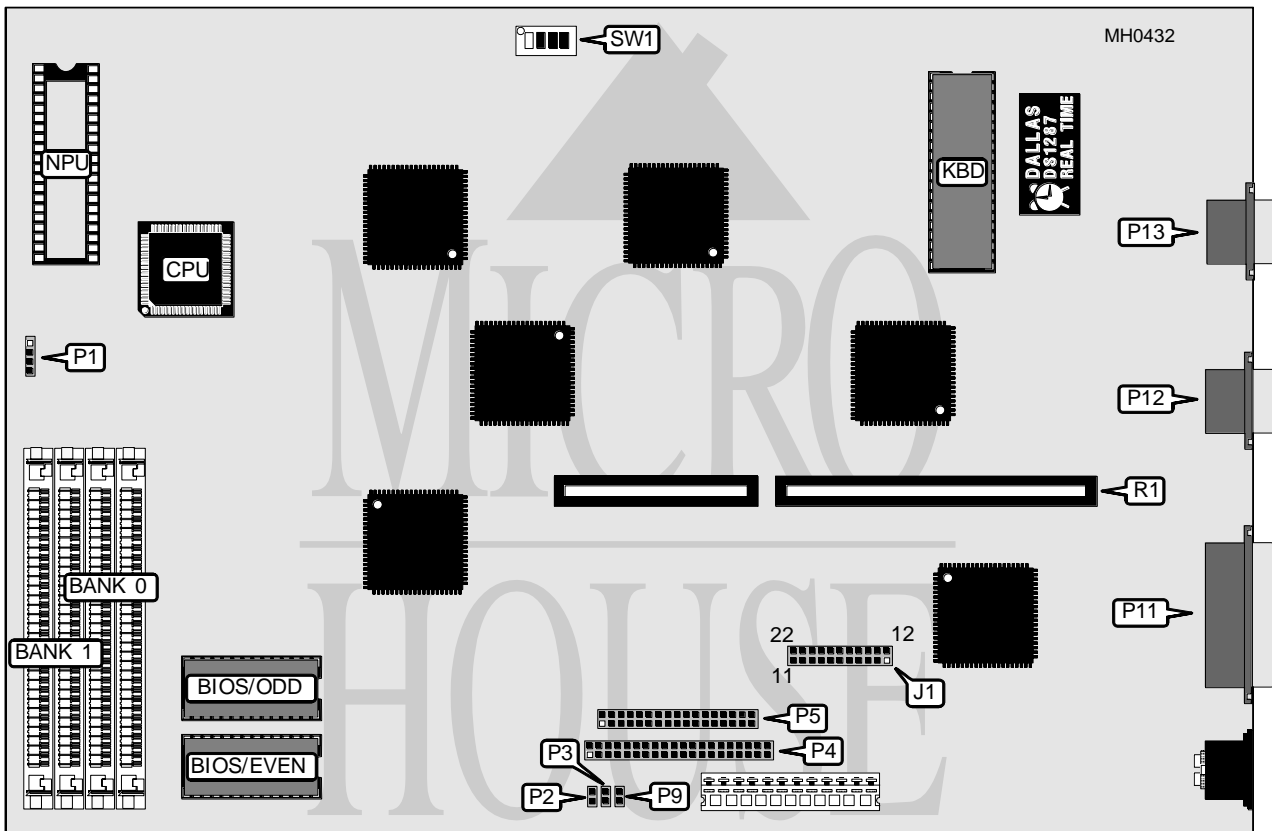


HYUNDAI ELECTRONICS, INC.

SUPER-286X

Processor	80286
Processor Speed	12MHz
Chip Set	VLSI
Max. Onboard DRAM	4MB
Cache	None
BIOS	Award
Dimensions	355mm x 304mm
I/O Options	Parallel port, serial ports (2), floppy drive interface, IDE interface
NPU Options	80287



CONNECTIONS			
Purpose	Location	Purpose	Location
Speaker	P1	Reset switch	P9
IDE LED	P2	Parallel port	P11
Power LED	P3	Serial port 1	P12
IDE interface	P4	Serial port 2	P13
Floppy drive interface	P5	Riser card	R1

Continued on next page . . .

HYUNDAI ELECTRONICS, INC.

SUPER-286X

... continued from previous page

USER CONFIGURABLE SETTINGS		
Function	Jumper/Switch	Position
í Floppy drive interface enabled	J1 pins 1 & 2	Closed
Floppy drive interface disabled	J1 pins 1 & 2	Open
í IDE interface enabled	J1 pins 11 & 12	Closed
IDE interface disabled	J1 pins 11 & 12	Open
í Monitor type select color	SW1/4	On
Monitor type select monochrome	SW1/4	Off

DRAM CONFIGURATION		
Size	Bank 0	Bank 1
512KB	(2) 256K x 9	NONE
640KB	(2) 256K x 9	(2) 64K x 9
1MB	(2) 256K x 9	(2) 256K x 9
2MB	(2) 1M x 9	NONE
4MB	(2) 1M x 9	(2) 1M x 9

DRAM SWITCH CONFIGURATION			
Size	SW1/1	SW1/2	SW1/3
512KB	On	On	On
640KB	Off	On	On
1MB	On	Off	On
2MB	Off	Off	On
4MB	On	On	Off

PARALLEL PORT CONFIGURATION	
Setting	J1
LPT1	pins 3 & 4, 14 & 15 closed
LPT2	pins 4 & 5, 15 & 16 closed
Disabled	Open

SERIAL PORT 1 CONFIGURATION	
Setting	J1
COM1	pins 6 & 7, 17 & 18 closed
COM3	pins 7 & 8, 18 & 19 closed
Disabled	Open

SERIAL PORT 2 CONFIGURATION	
Setting	J1
COM2	pins 10 & 11, 21 & 22 closed
COM4	pins 9 & 10, 20 & 21 closed
Disabled	Open