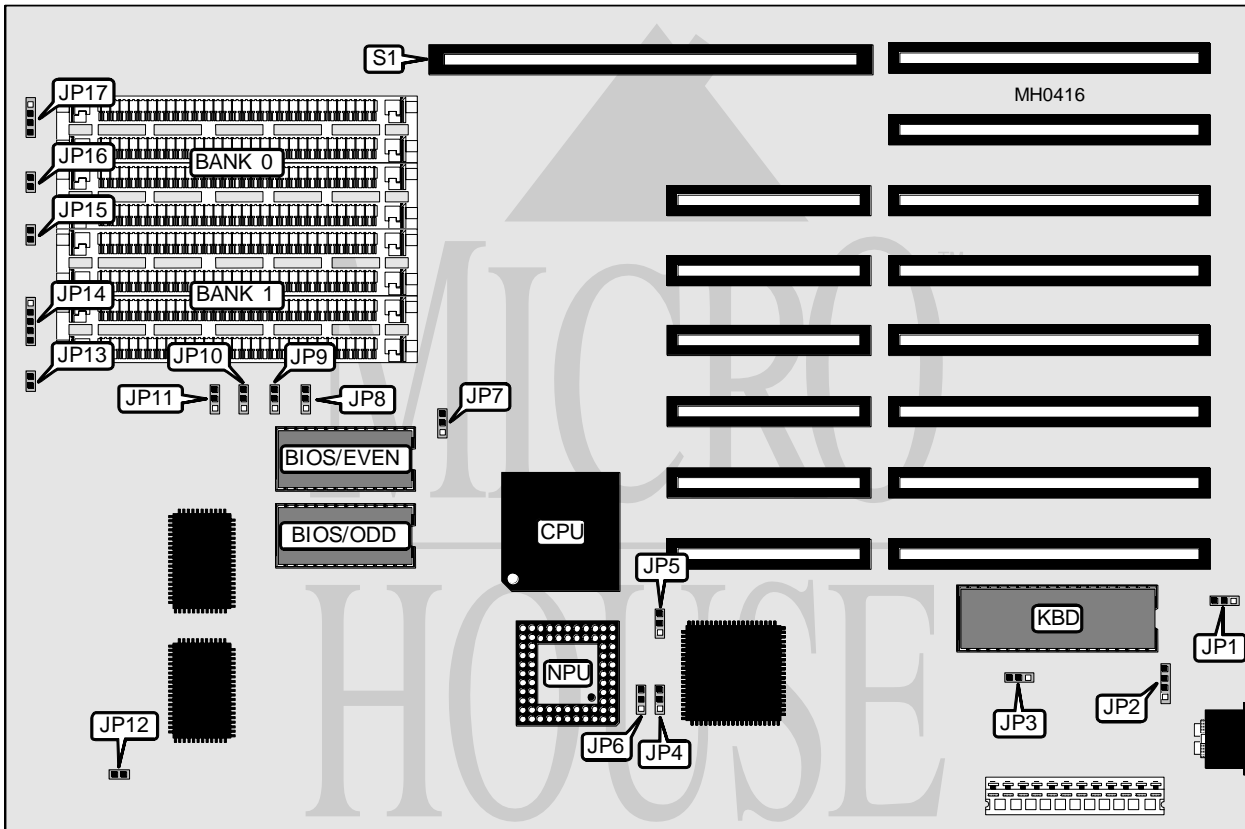


UNIDENTIFIED

YL - A05

Processor	80386DX
Processor Speed	20/25MHz
Chip Set	ACC
Max. Onboard DRAM	8MB
Cache	None
BIOS	AMI
Dimensions	330mm x 218mm
I/O Options	32-bit external memory card slot
NPU Options	80387



CONNECTIONS			
Purpose	Location	Purpose	Location
External battery	JP2	Turbo LED	JP16
Turbo switch	JP13	Speaker	JP17
Power LED & keylock	JP14	32-bit external memory card	S1
Reset switch	JP15		

Continued on next page . . .

UNIDENTIFIED

YL - A05

... continued from previous page

USER CONFIGURABLE SETTINGS		
Function	Jumper	Position
í Battery select internal	JP1	pins 1 & 2 closed
Battery select external	JP1	pins 2 & 3 closed
í Monitor type select color	JP3	pins 2 & 3 closed
Monitor type select monochrome	JP3	pins 1 & 2 closed
í Factory configured - do not alter	JP4	N/A
í Pipeline mode enabled	JP5	pins 1 & 2 closed
Pipeline mode disabled	JP5	pins 2 & 3 closed
í NPU mode select synchronous	JP6	pins 1 & 2 closed
NPU mode select asynchronous	JP6	pins 2 & 3 closed
í NPU disabled	JP12	Open
NPU enabled	JP12	Closed

DRAM CONFIGURATION				
Size	Bank 0	Bank 1	Bank 2	Bank 3
1MB	(4) 256K x 9	NONE	NONE	NONE
1MB	NONE	NONE	(4) 256K x 9	NONE
2MB	(4) 256K x 9	(4) 256K x 9	NONE	NONE
2MB	NONE	NONE	(4) 256K x 9	(4) 256K x 9
4MB	(4) 256K x 9	(4) 256K x 9	(4) 256K x 9	(4) 256K x 9
4MB	(4) 1M x 9	NONE	NONE	NONE
4MB	NONE	NONE	(4) 1M x 9	NONE
8MB	(4) 1M x 9	(4) 1M x 9	NONE	NONE
8MB	NONE	NONE	(4) 1M x 9	(4) 1M x 9
16MB	(4) 1M x 9	(4) 1M x 9	(4) 1M x 9	(4) 1M x 9

Notes: Banks 2 & 3 are used when an external proprietary memory card is installed.

DRAM JUMPER CONFIGURATION					
Size	JP7	JP8	JP9	JP10	JP11
1MB	1 & 2	1 & 2	1 & 2	1 & 2	1 & 2
1MB	1 & 2	2 & 3	2 & 3	2 & 3	2 & 3
2MB	1 & 2	1 & 2	1 & 2	1 & 2	1 & 2
2MB	1 & 2	2 & 3	2 & 3	2 & 3	2 & 3
4MB	1 & 2	2 & 3	2 & 3	2 & 3	2 & 3
4MB	2 & 3	1 & 2	1 & 2	1 & 2	1 & 2
4MB	2 & 3	2 & 3	2 & 3	2 & 3	2 & 3
8MB	2 & 3	1 & 2	1 & 2	1 & 2	1 & 2
8MB	2 & 3	2 & 3	2 & 3	2 & 3	2 & 3
16MB	2 & 3	2 & 3	2 & 3	2 & 3	2 & 3

Notes: Pins designated should be in the closed position.